

European Solar Energy Storage

Wind energy storage research institute



Overview

What is a wind turbine laboratory?

The Laboratory is the only test base in the world that has the capacity of wind turbines full performance test and research on wind-optical storage united operation technology.

What is the future of energy storage?

Storage enables electricity systems to remain in balance despite variations in wind and solar availability, allowing for cost-effective deep decarbonization while maintaining reliability. The Future of Energy Storage report is an essential analysis of this key component in decarbonizing our energy infrastructure and combating climate change.

Why is energy storage important?

Energy storage is a potential substitute for, or complement to, almost every aspect of a power system, including generation, transmission, and demand flexibility. Storage should be co-optimized with clean generation, transmission systems, and strategies to reward consumers for making their electricity use more flexible.

Wind energy storage research institute

Wind

Wind energy, particularly offshore wind, needs to radically scale up to meet renewable energy needs. As this scale up is happening, the sustainability, equity, efficiency, and reliability of these new wind farms also needs to be ...



Jiangsu FGY Energy Storage Research Institute Co Ltd

Jiangsu FGY Energy Storage Research Institute Co Ltd is a Chinese company that specializes in the development of renewable energy projects in the solar, wind, and energy storage sectors.



Jiangsu FGY Energy Storage Research Institute ...

Jiangsu FGY Energy Storage Research Institute Co., LTD. (FGY) is a holding subsidiary company of Dynavolt Renewable Energy Technology Co., Ltd. (stock code:002684), which is a high-tech enterprise



MPEL Logo

Students and faculty are investigating energy conversion systems where enhanced performance of electrical machines and power

electronics is being exploited to develop a variety of novel ...



How about the Wind Energy Storage Research Institute?

The Wind Energy Storage Research Institute stands at the forefront of renewable energy innovation, focusing on the advancement of energy storage solutions ...

CENTER FOR ENERGY (SOLAR & WIND)

At Luban Workshop for New Energy various research activities are carried from the fundamental science to integrated energy technologies that can energize our lives. The field of energy research at CoE-New Energy Lab ...



Energy Storage Systems

A variety of energy storage systems can be used to help improve power system reliability by balancing utility grids and electricity distribution or smoothing the integration of renewable ...

Wind Energy Center

The University of Massachusetts Amherst has been selected by the U.S. Department of Energy (DoE) to establish and lead the Academic Center for Reliability and Resilience of Offshore ...



Using liquid air for grid-scale energy storage

Liquid air energy storage could be the lowest-cost solution for ensuring a reliable power supply on a future grid dominated by carbon-free yet intermittent energy sources, according to a new model from MIT ...



Wind energy research: State-of-the-art and future research directions

This paper reports the findings from the 2016 Wind Energy Research Workshop held in Lowell, MA. The workshop examined the state-of-the-art in wind energy research within ...



CHINA ELECTRIC POWER RESEARCH INSTITUTE

The Laboratory is the only test base in the world that has the capacity of wind turbines full performance test and research on wind-optical storage united operation technology.



Energy Systems , National Wind Institute , TTU

NWI is leading research in several areas such as Phasor Measurement deployment, renewable energy, grid integration, microgrid design, simulation and development and distribution ...



CHINA ELECTRIC POWER RESEARCH INSTITUTE

By means of independent R& D and equipment customization, etc., the Laboratory has created advanced scientific research and test facilities, including Zhangbei ...

Wind Research , Wind Research , NREL

Wind Research For nearly five decades, researchers from NREL have helped guide the development of energy technologies and crosscutting data and tools while advancing scientific and engineering ...





Energy Storage for Grid Connected Wind Generation ...

PRODUCT DESCRIPTION To date, the use of energy storage systems to optimize wind power generation has been limited to small, off-grid rural or village power applications plus a few ...

Energy Research Institute

Established in 2010, the Energy Research Institute @ NTU (ERI@N) distinguishes itself through research excellence directed towards outcomes of industry relevance, with focus on systems-level research for tropical ...



National Renewable Energy Laboratory (NREL) Home Page

NREL bridges research with real-world applications to advance energy technologies that lower costs, boost the economy, strengthen security, and ensure abundant ...



Research Focus , Energy Research Institute

Research Focus In line with ERI@N's mission to be a global centre-of-excellence for energy solutions RD& D, the structure of the institute is designed to achieve sufficient depth at various technology levels, along ...

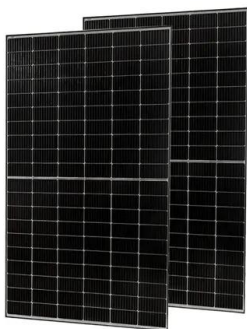


Beyond short-duration energy storage

Long-duration energy storage technologies can be a solution to the intermittency problem of wind and solar power but estimating technology costs remains a challenge. New ...

Renewable Energy Systems

IITM Research Park will be funding acquisition of Solar and Wind capacity under the Group Captive model at an estimated rate of INR4 - INR4.50 per kWh. The Research Park aims to start ...



Research

Research in the Ralph O'Connor Sustainable Energy Institute (ROSEI) is focused on key enabling innovations that address our vast energy needs and their consequences. ROSEI researchers cover a broad array of ...

Jiangsu FGY Energy Storage Research Institute Co.,LTD

Jiangsu FGY Energy Storage Research Institute Co., LTD. (FGY) is a holding subsidiary company of Dynavolt Renewable Energy Technology Co., Ltd. (stock code:002684), which is a high-tech ...

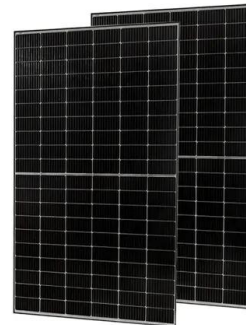


Energy Storage

The Institute focuses on clean energy storage and highly efficient utilization, and is committed to the R& D and breakthrough of compressed air energy storage and smart energy Internet ...

Storage

A particular focus is needed on multi-functional batteries that integrate and optimize storage with solar and wind generation, as well as carbon capture. The aim is for next generation storage solutions to provide safe, ...



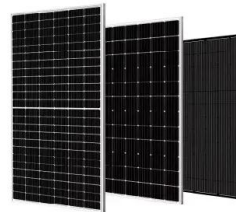
Energy Storage for Grid Connected Wind Generation ...

This Handbook Supplement provides an objective information resource on the leading, near-term energy storage systems and their costs and benefits for a range of leading grid connected wind ...



Research

Research in the Ralph O'Connor Sustainable Energy Institute (ROSEI) is focused on key enabling innovations that address our vast energy needs and their consequences. ROSEI researchers ...



Energy & Infrastructure , Prairie Research Institute

PRI provides data needed to responsibly site solar and wind energy facilities and leads applied research in biofuels, critical minerals, geothermal energy, and hydrogen storage, helping to ...

Hybrid solar, wind, and energy storage system for a sustainable ...

The reliance on grid electricity generated from fossil fuels in many countries continues to contribute to annual CO₂ emissions. Implementing renewable energy systems ...





Our research , Energy Institute , The University of Sheffield

The Energy Institute carries out research across a wide range of fields, including renewable, nuclear and conventional energy generation, energy storage, energy use and carbon capture, ...

The Future of Energy Storage , MIT Energy Initiative

MITEI's three-year Future of Energy Storage study explored the role that energy storage can play in fighting climate change and in the global adoption of clean energy grids.



Contact Us

For catalog requests, pricing, or partnerships, please visit:
<https://bialydom.kolobrzeg.pl>