

## European Solar Energy Storage

# Which type of settings is good for solar energy



## Overview

---

Modern solar installations require precise configuration across three critical parameters: tilt angle, azimuth orientation, and inverter optimization settings.

Modern solar installations require precise configuration across three critical parameters: tilt angle, azimuth orientation, and inverter optimization settings.

This setting varies based on the type of solar technology deployed. Solar photovoltaic (PV) panels typically operate efficiently at moderate temperatures, while solar thermal systems, utilized for heating purposes, require much higher settings to achieve effective results.

Optimizing solar panel settings delivers up to 30% more energy yield and significantly reduces long-term operational costs for commercial facilities. Modern solar installations require precise configuration across three critical parameters: tilt angle, azimuth orientation, and inverter optimization settings.

Discover the optimal direction and angle for solar panels to maximize energy output. Complete guide with calculations, tools, and location-specific recommendations for 2025.

Optimizing your solar panel configuration involves considering three key factors: angle, orientation, and shading. Let's dive into each of these in more detail. How do I choose the best solar panel placement?

Utilizing Solar Design Software for Optimal Placement Advanced solar design tools and software can analyze site conditions and suggest the best panel placement. Some popular tools include: Proper solar panel placement is essential for maximizing efficiency and return on investment.

Why should you optimize your solar panel direction and orientation?

Optimizing your solar panel direction and orientation is one of the most impactful decisions you can make for your solar investment. The right positioning can increase your energy production by up to 30%, significantly improving your return on investment and long-term savings.

Which direction should solar panels be installed?

South-facing solar panels typically yield the highest energy production, while east-west facing roofs can still be effective. The direction of your solar panels is generally more important than their angle. Most roof tilts will work well, with a few exceptions.

How do I choose a good solar installer?

A good solar installer can help you make the most of your roof's potential. To maximize solar savings, tilt your panels to match your home's latitude. This angle, usually between 30 and 45 degrees, ensures your solar panels catch the most sunlight throughout the year.

How important is solar panel placement?

Orientation Impact is Massive: The difference between optimal and poor solar panel placement can impact energy production by up to 30%, making proper positioning one of the most critical factors in maximizing your solar investment return.

Do solar panels need to be spaced?

Solar Panel Spacing for Reduced Energy Loss Proper spacing between solar panels prevents shading and allows for adequate airflow, which reduces overheating and increases efficiency. Key considerations: Avoid placing panels too close to each other, especially in rows. Maintain a minimum distance based on the panel's tilt angle and site conditions.

## Which type of settings is good for solar energy

---



### The 11 Best and 6 Worst States for Solar

States like California and Arizona are often hailed as solar leaders due to their sunny climates and supportive policies. On the other hand, states with limited sunlight or weaker incentives may struggle to achieve ...

### Optimizing Your Solar Panel Configuration for Maximum Energy ...

Optimizing your solar panel configuration involves considering three key factors: angle, orientation, and shading. Let's dive into each of these in more detail.



Sample Order  
UL/KC/CB/UN38.3/UL



### Solar Photovoltaic Panel Settings

Select your timezone and enter your coordinates (latitude and longitude) to calculate the optimal orientation for fixed solar panels, twice adjusted solar panels, quarterly (seasonally) adjusted ...

### How Solar Panels Work in Different Weather Conditions

In the realm of solar energy, sunlight is the prime

component of energy production. High-intensity sunlight directly influences the solar panels' efficiency. Therefore, ...

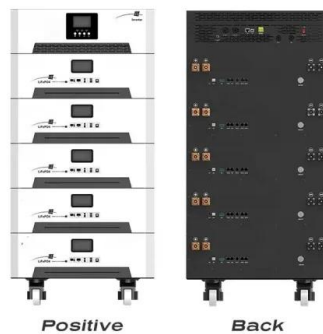


## Solar Charge Controller Settings Guide

By adjusting the solar charge controller settings to fit the specific needs of your lead-acid batteries, you ensure that the batteries charge efficiently and that you maximize the potential of your solar energy system. Solar Charge Controller ...

## PWM Solar Charge Controller Settings , How to Adjust

Solar charge controllers have different settings that need to be adjusted in order for them to work properly. They set up the output parameters of the power so that the ...



## Where Should You Put Solar Panels?

The location of your solar panels significantly impacts their efficiency and the energy they generate. In turn, this impacts your costs and savings. So where exactly is the best place to put solar panels? Our guide will ...

## How to adjust the solar controller settings , NenPower

Adjusting solar controller settings involves several key steps and considerations. 1. Identify the type of solar controller you are using, 2. Access the controller's menu or ...

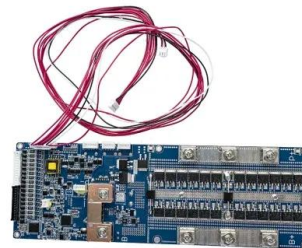


## How to Set Up Your Solar Energy Kit for Home in 5 Easy Steps

Transform your home with a solar energy kit for home in just 5 easy steps! Calculate your needs, choose the right kit, and install efficiently.

## What Is A Good Performance Ratio For Solar?

Performance Ratio (PR) testing for solar plants serves as a fundamental tool in assessing the operational efficiency and overall health of solar photovoltaic (PV) systems. The primary purpose of this testing is to quantify ...



## What settings do you need to turn on for solar energy?

The efficiency of solar energy generation is crucial to achieving significant reductions in electricity costs and promoting sustainable energy use. This section outlines the essential settings that must be enabled for optimal ...



## 7. ALL FEATURES AND SETTINGS

Knowing how to configure the solar charger controller settings according to your specific solar battery type for an effective solar energy. . Getting your solar charge controller settings right is ...



## **Solar Panel Direction & Orientation: 2025 Complete Guide**

Discover the optimal direction and angle for solar panels to maximize energy output. Complete guide with calculations, tools, and location-specific recommendations for 2025.

## Different Types of Solar Energy

Solar energy is a rapidly growing source of renewable power that offers numerous environmental and economic benefits. As the demand for cleaner energy solutions continues to rise, it's important to understand the different types of ...





## What is the temperature setting for solar energy? , NenPower

This setting varies based on the type of solar technology deployed. Solar photovoltaic (PV) panels typically operate efficiently at moderate temperatures, while solar ...

## What are the parameter settings for solar pumps? , NenPower

When discussing the parameter settings for solar pumps, several critical aspects must be addressed. 1. Solar pump systems' efficiency is primarily influenced by the solar panel ...



## Solar Charge Controller Settings Guide 2023 - ...

Discover the key to efficient solar charging. Our Solar Charge Controller Settings Guide provides expert insights. Set parameters, optimize voltage, and take control of your solar energy system. Get started now!

## Solar Energy

Solar Energy The sun emits solar radiation in the form of light. Solar energy technologies capture this radiation and turn it into useful forms of energy. There are two main types of solar energy technologies--photovoltaics ...



## Optimizing your Solar Inverter / Solar Battery Settings, ...

For the most part, people have mainly three settings available to them, all with their own advantages and disadvantages. Maximize Energy Savings - This means you wish to use your battery reserve to power your ...

## What settings do you need to turn on for solar energy?

The efficiency of solar energy generation is crucial to achieving significant reductions in electricity costs and promoting sustainable energy use. This section outlines the ...



## Optimal Solar Panel Angle: Maximizing Efficiency and Energy ...

Discover how to choose the right angle for your solar panels based on your location and seasonal variations. Proper orientation and tilt ensure maximum sunlight ...



## What is the temperature setting for solar energy? , NenPower

1. The optimal temperature setting for solar energy systems is crucial for maximizing efficiency and output. This setting varies based on the type of solar technology ...



## The 3 Different Types of Solar Power Systems Explained

There are three basic types of solar power systems: grid-tie, off-grid, and backup power systems. Here's a quick summary of the differences between them: Off-grid solar is designed to bring power to remote locations where there is no grid ...

## How to Optimize Solar Panel Placement for Maximum Efficiency

Optimizing the placement of solar panels is crucial for maximizing energy generation and efficiency. Proper positioning ensures that panels receive the highest amount ...



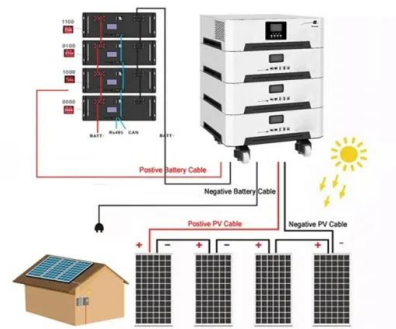
## Different Types of Solar PV Systems and Their Suitability for ...

Explore the types of solar PV systems ideal for homes or businesses in India and find the best fit for your energy needs and sustainability goals.



## Shade And Solar Panels: What You Need to Know

The degree of impact from shade varies based on the amount of shade, type of solar panels, and the inverter technology used. While optimal performance is achieved in direct sunlight, solar ...



## 7 Reasons Why Solar Power is Better Than Other Types of Energy

With so many types of energy available, you may be wondering if or why solar power is better than other forms of energy. Between the monetary advantages and its eco-friendliness, there's ...

## Victron charge controller settings for lead-acid and

Step 7 Go to the battery preset menu and select the appropriate type or chemistry Victron MPPT charging settings are easy to follow. However, for those who are looking to setup the charging settings manually, the table below ...





## **[Explained] Solar Charge Controller Settings For AGM ...**

How To Set Solar Charger Controller Settings For AGM Battery While lots of solar chargers come with default settings for different battery types like lithium, lead acid, gel, and AGM, some don't. And without the proper ...

## **Contact Us**

---

For catalog requests, pricing, or partnerships, please visit:  
<https://bialydom.kolobrzeg.pl>