

## European Solar Energy Storage

# Where on earth s surface is most solar energy received



## Overview

---

The availability and intensity of solar radiation on the earth's surface varies by time of day and location. In general, the intensity of solar radiation at any location is greatest when the sun is at its highest apparent position in the sky—at solar noon—on clear, cloudless days.

The availability and intensity of solar radiation on the earth's surface varies by time of day and location. In general, the intensity of solar radiation at any location is greatest when the sun is at its highest apparent position in the sky—at solar noon—on clear, cloudless days.

The availability and intensity of solar radiation on the earth's surface varies by time of day and location. In general, the intensity of solar radiation at any location is greatest when the sun is at its highest apparent position in the sky—at solar noon—on clear, cloudless days. Latitude.

However, only a fraction of this immense power - about 30% - is absorbed by the Earth's surface, enough to power our planet many times over. The amount of solar energy that reaches the top of Earth's atmosphere per unit area is known as the solar constant. Its value is approximately 1,361 watts per.

To determine the total solar radiation received by the surface of the Earth, 1. it varies by location and season, 2. global average annually amounts to approximately 1,366 watts per square meter, 3. factors such as cloud cover, atmospheric conditions, and the angle of the sun significantly.

The surface of the Earth receives solar energy at an average of 343 W/m<sup>2</sup>. If we multiply this times the surface area of the Earth, about  $5 \times 10^{14}$  m<sup>2</sup>, we get  $1715 \times 10^{14}$  W. But, 30% of this is reflected, and only 30% of the Earth is above sea level, so the usable solar energy we receive on the land.

Every location on Earth receives sunlight at least part of the year. The amount of solar radiation that reaches any one spot on the Earth's surface varies according to: Local weather. Because the Earth is round, the sun strikes the surface at different angles, ranging from 0° (just above the

Not all of the sunlight that strikes the top of the atmosphere is converted into energy at the surface of the Earth. The Solar energy to the Earth refers to this energy that hits the surface of the Earth itself. The amount of energy that reaches the the Earth provides a useful understanding of the.

## Where on earth s surface is most solar energy received

---



### Which part of the Earth has more amount of energy received and ...

Q1. The part of the Earth that receives the most amount of energy from the Sun is the equatorial region, particularly the tropical zones near the equator.

## Unit 4 Lesson 7 : Solar Radiation and Earth's Seasons

- The highest solar radiation per unit area is received at the equator and decreases towards the poles. - The solar radiation received at a location on the earth's surface varies seasonally, with ...



### The Sun's Energy: An Essential Part of the Earth System

Without the Sun, life on Earth would not be possible. The energy we receive from the Sun provides light and heat, drives our planet's winds and ocean currents, helps crops grow, and more.

### Why does more solar energy reach the equatorial regions than

Most solar energy is absorbed at the surface, while most heat is radiated back to space by the atmosphere. Earth's average surface temperature is maintained by two large, ...



## Solar Energy Potential and Utilization , EARTH 104: Energy, ...

The surface of the Earth receives solar energy at an average of 343 W/m<sup>2</sup>. If we multiply this times the surface area of the Earth, about 5x10<sup>14</sup> m<sup>2</sup>, we get 1715x10<sup>14</sup> W. But, 30% of this ...

### Earth's energy budget

The total amount of energy received per second at the top of Earth's atmosphere (TOA) is measured in watts and is given by the solar constant times the cross-sectional area of the Earth corresponded to the radiation. Because the surface ...



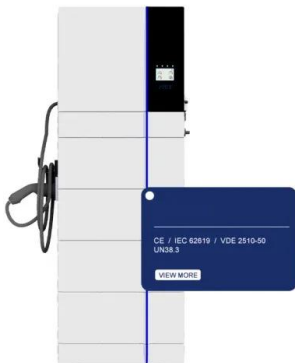
## How much energy from the sun reaches Earth?

Think of it as the baseline - the amount of solar energy hitting the top of Earth's atmosphere, measured on a surface facing the sun, at our average distance from it.



## Solar Radiation Basics

Because the Earth is round, the sun strikes the surface at different angles, ranging from 0° (just above the horizon) to 90° (directly overhead). When the sun's rays are vertical, the Earth's ...



## How much solar radiation does the ground receive?

Cloud cover plays a significant role in determining the amount of solar radiation that reaches the Earth's surface. Dense clouds can block direct sunlight, reducing solar irradiance significantly.

## Ch. 3: Review Flashcards , Quizlet

Study with Quizlet and memorize flashcards containing terms like The ultimate source of the energy that drives the atmosphere, produces the weather, and is the principal control of climate ...





## Geo 2300 Exam 1 Flashcards , Quizlet

Study with Quizlet and memorize flashcards containing terms like Which area receives the most seasonal variation in incoming radiation?, The amount of solar energy intercepted at a ...

### Where solar is found

The availability and intensity of solar radiation on the earth's surface varies by time of day and location. In general, the intensity of solar radiation at any location is greatest ...

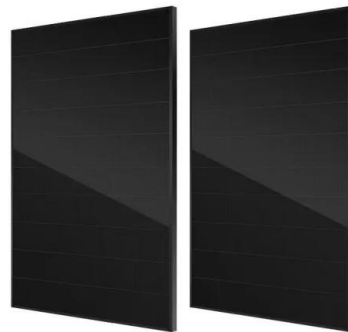


## Movement of Food in Plants: Storage And Cells

When sunlight strikes Earth's surface at a more direct angle near the equator, the light energy (solar radiation) is more intense and concentrated, and the surface will get warmer.

### Climate and Earth's Energy Budget

The solar radiation received at Earth's surface varies by time and latitude. This graph illustrates the relationship between latitude, time, and solar energy during the equinoxes.



### Solar energy to the Earth

Due to reflection by the atmosphere, clouds, and Earth's surface we can approximate that 70% of solar energy incident on the edge of the Earth's atmosphere is actually absorbed by the Earth.



### **How Does the Relationship Between Solar Energy and Latitude ...**

The relationship between solar energy and latitude impacts how much sunlight a specific area on Earth receives. Areas near the equator get more direct and intense sunlight, ...



### **ESS**



### **INSOLATION: FACTORS AND DISTRIBUTION - Climatology**

Source: Gabler, Petersen and Trapasso (2007) Receipt of Energy The earth's surface and the atmosphere receive maximum energy from the sun in a form of solar energy to run their ...

## How much solar radiation does the ground receive? , NenPower

Cloud cover plays a significant role in determining the amount of solar radiation that reaches the Earth's surface. Dense clouds can block direct sunlight, reducing solar ...



## Solar Energy Potential and Utilization , EARTH 104: Energy, ...

In 2018, we used about  $600 \times 10^{18}$  Joules of energy, which is just a shade less than 0.1% of the harvestable solar energy we receive on the land. This means that even if we got all of our ...

## Why Do Different Latitudes Receive Different Amounts ...

Equatorial regions receive more direct sunlight, while higher latitudes receive sunlight at less direct angles. Latitude determines the angle at which sunlight hits the Earth's surface, impacting solar energy levels. Solar ...



## [Absorption / reflection of sunlight](#)

Global Change Infographic The amount of sunlight that is absorbed or reflected by Earth's surface and atmosphere affects the energy budget, the amount of energy available on Earth that drives ...



## How Much of the Sun's Energy Reaches Earth?

What percentage of the solar energy reaching the Earth's atmosphere is actually absorbed by the surface? As mentioned earlier, roughly 30% of the incoming solar radiation is ...



## Solar irradiance

The shield effect of Earth's atmosphere on solar irradiation. The top image is the annual mean solar irradiation (or insolation) at the top of Earth's atmosphere (TOA); the bottom image shows the annual insolation reaching the Earth's ...

### OEM service

Hot Colors:



Color can be customized  
 more questions just do not hesitate to contact us

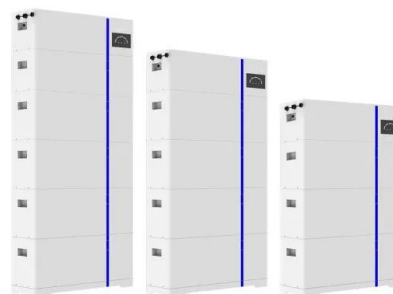
LOGO Position: (Screen printing)



## Solar radiation at the earth's surface

The areas within the 160 kcal/cm<sup>2</sup>/yr line seem to be the ones where solar energy is important in the earth's heat balance. Even though some of them show seasonally low values, they are also ...

### ESS





## Solar Radiation Basics

Because the Earth is round, the sun strikes the surface at different angles, ranging from 0° (just above the horizon) to 90° (directly overhead). When the sun's rays are vertical, the Earth's surface gets all the energy possible.

### Which part of the Earth has more amount of energy ...

Q1. The part of the Earth that receives the most amount of energy from the Sun is the equatorial region, particularly the tropical zones near the equator.



## Climate and Earth's Energy Budget

Earth's temperature depends on how much sunlight the land, oceans, and atmosphere absorb, and how much heat the planet radiates back to space. This fact sheet describes the net flow of energy through different parts of the Earth ...

## Contact Us

For catalog requests, pricing, or partnerships, please visit:  
<https://bialydom.kolobrzeg.pl>