

European Solar Energy Storage

What substance captures the solar energy used for photosynthesis



Overview

Photosynthetic cells contain chlorophyll and other light-sensitive pigments that capture solar energy. In the presence of carbon dioxide, such cells are able to convert this solar energy into energy-rich organic molecules, such as glucose.

Photosynthetic cells contain chlorophyll and other light-sensitive pigments that capture solar energy. In the presence of carbon dioxide, such cells are able to convert this solar energy into energy-rich organic molecules, such as glucose.

During the process of photosynthesis, cells use carbon dioxide and energy from the Sun to make sugar molecules and oxygen. These sugar molecules are the basis for more complex molecules made by the photosynthetic cell, such as glucose. Then, via respiration processes, cells use oxygen and glucose.

When plants absorb solar energy in photosynthesis, they convert it into glucose to store excess energy and create ATP for metabolic activities. This process efficiently sustains plant life through natural energy transformation. Solar energy is converted into chemical energy. Chlorophyll absorbs.

Photosynthesis Diagram of photosynthesis showing how water, light, and carbon dioxide are absorbed by a plant to produce oxygen, sugars, and more carbon dioxide. Senior Scientist, Chemical Biodynamics Division, Lawrence Berkeley Laboratory, University of California, Berkeley, 1978-86; Research.

Chloroplasts are vital organelles in plant cells that contain chlorophyll, a pigment responsible for capturing light energy from the sun. This light energy is fundamental to photosynthesis, where it is transformed into chemical energy. Chlorophyll absorbs primarily blue and red wavelengths of.

Plants absorb light energy through the process of photosynthesis, which occurs in chloroplasts, found mainly in leaf cells. Chlorophyll, a pigment that gives plants their green colour, is responsible for absorbing light energy, particularly in the red and blue regions of the visible spectrum.

Chlorophyll captures sunlight and converts it into chemical energy through photosynthesis, storing it in the form of glucose. This energy is then transferred to other organisms in the food chain. Without chlorophyll, plants can't survive, and life on Earth would be vastly different. As you explore. Which biotic component can trap solar energy through the process of photosynthesis?

Green plants are the biotic component that can trap solar energy through the process of photosynthesis. Chloroplasts in green plants absorb sunlight, and chlorophyll pigment converts it into chemical energy. Chlorophyll captures light energy to power photosynthesis, initiating the process of solar energy conversion.

How do photosynthetic cells capture solar energy?

In plants, some sugar molecules are stored as sucrose or starch. Photosynthetic cells contain chlorophyll and other light-sensitive pigments that capture solar energy. In the presence of carbon dioxide, such cells are able to convert this solar energy into energy-rich organic molecules, such as glucose.

How is solar energy absorbed by plants?

The process of solar energy absorption by plants is facilitated by chlorophyll, a pigment present in the chloroplasts of plant cells. Chlorophyll captures sunlight and initiates a series of chemical reactions that ultimately result in the conversion of solar energy into chemical energy.

Which biotic component is responsible for trapping solar energy?

You're likely unaware that the biotic component responsible for trapping solar energy is found in the cells of green plants, specifically in organelles called chloroplasts, which contain the pigment chlorophyll. Chlorophyll captures sunlight and converts it into chemical energy through photosynthesis, storing it in the form of glucose.

How do plants use solar energy?

Plants utilize this solar energy to produce ATP molecules, which serve as the primary energy currency for various metabolic activities within the plant cells. The process of solar energy absorption by plants is facilitated by chlorophyll, a pigment present in the chloroplasts of plant cells.

How do chloroplasts convert solar energy into chemical energy?

During photosynthesis, the energy transformation process within chloroplasts is vital for plants to convert solar energy into chemical energy efficiently. Chloroplasts are like the powerhouses of plant cells, responsible for capturing and converting light energy into usable forms. Here's how chloroplasts play an essential role in energy conversion:

What substance captures the solar energy used for photosynthesis



Photosynthesis, Chloroplast , Learn Science at ...

Photosynthetic cells contain chlorophyll and other light-sensitive pigments that capture solar energy. In the presence of carbon dioxide, such cells are able to convert this solar energy

What Happens to the Solar Energy Absorbed by Plants During

Plants rely on the solar energy pigment in photosynthesis to capture and convert sunlight into energy. This pigment, known as chlorophyll, absorbs light across a range of ...



Photosynthesis: How Plants Transform Light and CO2 into Energy

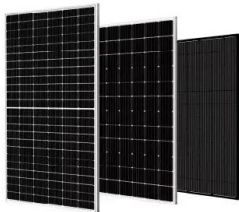
Chlorophyll is a pigment that plays a key role in photosynthesis, acting as the primary agent for capturing light energy. It is predominantly found in the chloroplasts of plant ...



What substances can absorb solar energy? , NenPower

Chlorophyll, in particular, efficiently captures

solar energy needed for photosynthesis, sustaining life on Earth. Photovoltaic cells, specifically designed to harness ...

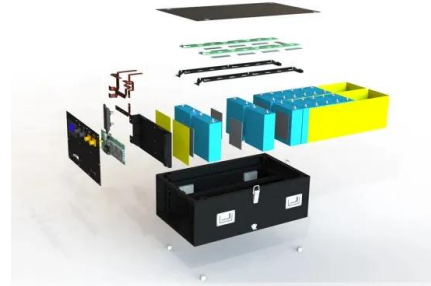


How Plants Harness Light Energy , ShunCy

During photosynthesis, chlorophyll captures solar energy, which is then converted into chemical energy in the form of ATP molecules. This process, known as photo ...

Photosynthesis, Chloroplast , Learn Science at Scitable

Photosynthetic cells contain chlorophyll and other light-sensitive pigments that capture solar energy. In the presence of carbon dioxide, such cells are able to convert this solar energy



Photosynthesis , Definition, Formula, Process, Diagram, ...

During photosynthesis in green plants, light energy is captured and used to convert water, carbon dioxide, and minerals into oxygen and energy-rich organic compounds.

Photosynthesis: How Plants And Algae Capture Light Energy

Chlorophyll, a green pigment in plants, is a key element that captures light energy from the sun. In algae and other photosynthetic organisms, accessory pigments like ...



Plants' Light Energy Capture: The Secret Substance Revealed

Chlorophyll is a green pigment molecule that is essential for photosynthesis, the process by which plants, algae, and some bacteria capture energy from sunlight to produce oxygen and chemical ...

Which Biotic Component Can Trap Solar Energy and How?

Chlorophyll captures light energy to power photosynthesis, initiating the process of solar energy conversion. Solar energy is trapped in the form of glucose, which is the ...



Which Biotic Component Can Trap Solar Energy and ...

Chlorophyll captures light energy to power photosynthesis, initiating the process of solar energy conversion. Solar energy is trapped in the form of glucose, which is the chemical energy stored in green plants.



What Substance Do Plants Use To Capture Light Energy

Chloroplasts are vital organelles in plant cells that contain chlorophyll, a pigment responsible for capturing light energy from the sun. This light energy is fundamental to ...



Contact Us

For catalog requests, pricing, or partnerships, please visit:
<https://bialydom.kolobrzeg.pl>