

## European Solar Energy Storage

# What part of earth gets the most solar energy



## Overview

---

Q1. The part of the Earth that receives the most amount of energy from the Sun is the equatorial region, particularly the tropical zones near the equator.

Q1. The part of the Earth that receives the most amount of energy from the Sun is the equatorial region, particularly the tropical zones near the equator.

The lowest latitudes get the most energy from the Sun. The highest latitudes get the least. The difference in solar energy received at different latitudes drives atmospheric circulation. Places that get more solar energy have more heat. Places that get less solar energy have less heat. Warm air.

The region of the Earth that is receives the most sunlight is capable of having the most solar energy. This would include all the area from 23.5o N to 23.5o S, the Tropic of Cancer and the Tropic of Capricorn. On the winter solstice, the sun is directed on the Tropic of Capricorn, and on the summer.

## What part of earth gets the most solar energy

---

### Solar energy to the Earth



The Solar energy to the Earth refers to this energy that hits the surface of the Earth itself. The amount of energy that reaches the the Earth provides a useful understanding of the energy for the Earth as a system. This energy goes ...

### Which part of the Earth receives the least sun's rays?

The equator receives the most direct sunlight and therefore the most solar energy from the sun. This is because the equator is located at the center of the Earth's spherical shape and is ...



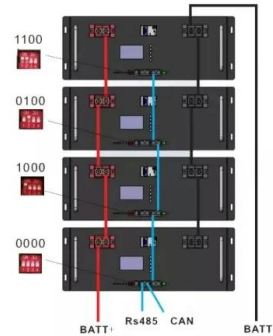
### What area of earth gets the most direct sun light?

The sun shines most directly over the Tropics, and specifically the equator, throughout the year, creating a net surplus in energy which is redistributed towards the poles.

## 10.6: Energy from the Sun

Table of contents Solar Radiation on Earth  
 Northern Hemisphere Summer Northern  
 Hemisphere Winter Equinox The earth constantly

tries to maintain an energy balance with the atmosphere. Most of the energy that reaches the ...



### 10.15: Solar Energy and Latitude

The more focused the rays are, the more energy an area receives, and the warmer it is. The lowest latitudes get the most energy from the Sun. The highest latitudes get the least. The ...

### **Which part of the Earth receives most of the Sun's energy?**

The equator receives the most of Sun's energy as it receives sunlight more directly than the poles due to the Earth's tilt on its axis. This leads to higher temperatures near the equator compared



### **Guide Questions: 2. Which part of the earth receives the least solar**

Image of Mars planet Mars planet Earth Solar system planets How many planets in the solar system Earth planet How does latitude relate with the solar energy received Which part of the ...



### What area of Earth is receiving the most solar radiation?

The area of Earth receiving the most solar radiation varies with the Earth's axial tilt and its position in its orbit around the Sun. In general, the equator receives the most solar ...



### What region of the earth receive most solar energy?

The equatorial regions near the equator receive the most solar radiation because the sun's rays are more direct at these latitudes, resulting in higher levels of solar ...

### Which region on Earth receives the most solar energy?

The equatorial region receives the most solar energy due to its direct sunlight, less atmospheric interference, and consistent day length throughout the year. In contrast, polar ...

**18650** 3.7V  
RECHARGEABLE BATTERY Li-ion  
**2000mAh**





## Solar Energy and Latitude , CK-12 Foundation

The difference in solar energy received at different latitudes drives atmospheric circulation. Places that get more solar energy have more heat. Places that get less solar ...

### Why solar energy input is greater near the equator ...

Regarding the part of Earth that receives the most solar radiation in a year, it is typically the equatorial region, specifically the area around the equator known as the Intertropical Convergence



#### INTEGRATED DESIGN

EASY TO TRANSPORT AND INSTALL,  
 FLEXIBLE DEPLOYMENT



### Climate and Earth's Energy Budget

The Southern Hemisphere receives more energy during December (southern summer) than the Northern Hemisphere does in June (northern summer) because Earth's orbit is not a perfect circle and Earth is slightly closer to the Sun during ...

### What part of Earth receives the most solar radiation in a year?

The part of the Earth that receives the most solar radiation in a year is the equator. This is because the equator is the part of the Earth that is closest to the sun due to the planet's ...



### Which part of the earth recieves most of the suns rays

The part of the earth that receives the most sun rays are the equatorial parts example of the country that belongs to the equatorial places is Philippines. And the least the ...



### Which Part of Earth Absorbs the Most Sunlight?

Covering about 71% of the Earth's surface, the oceans are like giant solar energy sponges. The top layer of the ocean, called the photic zone, basks in the most sunlight.

Highvoltage Battery



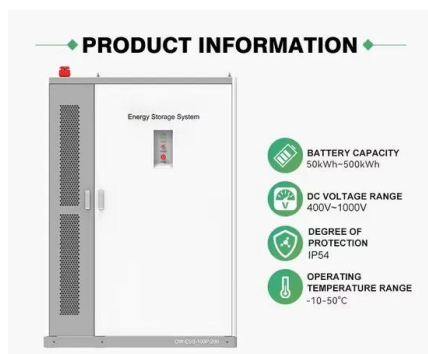
### [FREE] Which part of Earth absorbs the most sunlight? A.

The oceans absorb the most sunlight on Earth, as they cover a large portion of the planet's surface and capture around 95% of sunlight in their upper layers. This absorbed ...



## Climate and Earth's Energy Budget

The Southern Hemisphere receives more energy during December (southern summer) than the Northern Hemisphere does in June (northern summer) because Earth's orbit is not a perfect ...



## What region of the earth receive most solar energy?

The region of the Earth that is receives the most sunlight is capable of having the most solar energy. This would include all the area from 23.5o N to 23.5o S, the Tropic of ...

## [FREE] Which part of Earth absorbs the most sunlight? A.

The part of Earth that absorbs the most sunlight is the oceans. Covering about 71% of the Earth's surface, oceans play a significant role in absorbing solar energy. ...



## The Latitude Effect: Understanding the Variation in Sunlight ...

At the equator, those rays are practically high-fiving the Earth, delivering a whopping dose of solar energy. We're talking serious intensity here, like a plant's dream come ...



## Which part of the Earth has more amount of energy

Q1. The part of the Earth that receives the most amount of energy from the Sun is the equatorial region, particularly the tropical zones near the equator.

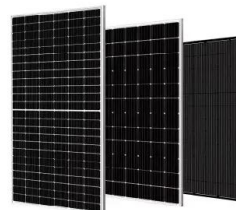


## Understanding Earth's Seasons: The Impact of Sunlight Angle

A. Which parts of Earth are most similar to the plate with an axis angle of  $0^\circ$ ? Explain. The equator, because it's just an invisible line that gets the largest amount of sun like ...

## [ES9 Ch. 14 Flashcards , Quizlet](#)

Area of Earth that receives the most solar radiation, is generally warm year-round, and extends between  $23.5^\circ$  south and  $23.5^\circ$  north of the equator.





## Which region on Earth receives the most solar energy?

In terms of solar energy exposure, the region that receives the most solar energy on Earth is the equatorial region. This is due to the way sunlight hits the Earth's ...

## [FREE] Which part of Earth absorbs the most sunlight? A.

The majority of the sunlight that reaches Earth is absorbed by its oceans. In fact, about half (47%) of the incoming solar energy is absorbed by both land and ocean surfaces, ...



## The Earth-Atmosphere Energy Balance

The earth-atmosphere energy balance is the balance between incoming energy from the Sun and outgoing energy from the Earth. Energy released from the Sun is emitted as shortwave light and ultraviolet energy. ...

## Solar Energy and Latitude , CK-12 Foundation

Different parts of Earth's surface receive different amounts of sunlight (Figure below). The Sun's rays strike Earth's surface most directly at the equator.



- ✔ LIQUID/AIR COOLING
- ✔ INTELLIGENT INTEGRATION
- ✔ PROTECTION IP54/IP55
- ✔ BATTERY /6000 CYCLES



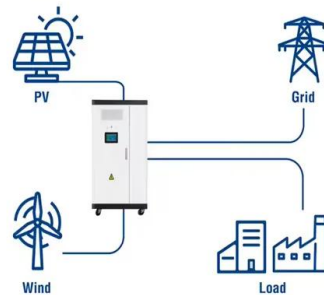
## Unit 8.5 Science Test Study Guide Flashcards , Quizlet

Study with Quizlet and memorize flashcards containing terms like How does solar energy input to Earth's surface change by latitude?., Which parts of the Earth experience the most direct ...

### What parts of the world get the most sunlight?

What parts of the world have the best potential for solar energy developments? Desert regions like the Sahara and Death Valley seem like obvious locales, but they're not the ...

#### Utility-Scale ESS solutions



## Contact Us

For catalog requests, pricing, or partnerships, please visit:  
<https://bialydom.kolobrzeg.pl>