

European Solar Energy Storage

What is the energy loss solar panels



Overview

PV system losses are the variance between the expected maximum output energy of a solar energy system and the actual energy it provides.

PV system losses are the variance between the expected maximum output energy of a solar energy system and the actual energy it provides.

Solar energy loss refers to the reduction in the potential energy that can be harnessed from sunlight due to various factors. 2. Technical inefficiencies in solar panels, environmental influences like shading and dust, and system design flaws all contribute to this loss. 3. Overall efficiency of.

Solar panels are one of the most reliable renewable energy investments, but like any technology, they experience gradual performance decline over time. Understanding your solar panel's degradation curve - the predictable rate at which panels lose efficiency - is crucial for making informed.

In this article, we'll break down the most common causes of energy loss in solar panels and what manufacturers and project developers can do to reduce them. 1. Cell Resistance: Trapped Electrons = Lost Energy (35%) Inside every solar panel are solar cells made from silicon. These cells create an.

PV system losses have a substantial impact on the overall efficiency and output power of solar panel arrays. Good solar design takes into account 10 main PV losses, while best design and installation practices help to reduce solar cell power losses. It's an unfortunate fact that solar panels are.

PV system losses are the variance between the expected maximum output energy of a solar energy system and the actual energy it provides. A solar PV system loss occurs at various phases of energy conversion and transfer, from the solar radiation hitting the panels to providing usable electricity to.

This table is available for both yearly and monthly losses and breaks down how incoming solar energy is reduced by various losses throughout the PV system: Input and optical losses: Shows the initial irradiation values and stepwise reductions from shading, soiling, angular, and spectral effects, on.

What is a solar PV system loss?

PV system losses are the variance between the expected maximum output energy of a solar energy system and the actual energy it provides. A solar PV system loss occurs at various phases of energy conversion and transfer, from the solar radiation hitting the panels to providing usable electricity to your home or the grid.

Why do solar panels lose power?

From module mismatch and soiling to temperature fluctuations and energy conversion inefficiencies, each component in the system can potentially lead to a loss of solar output. Identifying the causes of these PV losses is essential for optimizing the system's design and increasing the efficiency of your solar panels.

How often do solar panels lose power?

Although solar modules may function for up to 50 years, panel degradation accounts for approximately 0.8% power output reduction each year. What Is The Approach To Reduce Losses In A Solar PV Power Project?

A quick glance at the check-list of solar PV losses will confirm that most are associated with design issues or component characteristics.

What are angular and spectral losses in solar panels?

Angular Losses: Result from sunlight incidence angles on solar panels.
Spectral Losses: Reflect changes in the solar spectrum as light travels through the atmosphere.
Conversion Losses: Arise during the conversion of sunlight into electrical energy within PV cells.
DC Losses: This happens due to resistance in cables before inverter conversion.

Why do solar cells lose energy?

Light photons interact with the P-N junctions in the solar cell's crystalline structure to produce energy. Optical losses occur when light bounces off the panel's surface rather than being absorbed into it to interact with the electrons.

What is connection loss in solar panels?

Connection loss captures resistive losses across wiring connectors and diodes.

This loss can be avoided as most solar panels contain bypass diodes. The bypass diodes are connected in parallel with solar panels. It creates a path for the current to flow around them in case the panels become faulty.

What is the energy loss solar panels



PV statistics and long-term degradation

Explore PV energy systems statistics, losses, and long-term degradation data to optimize performance and enhance decision-making for your solar projects.

Energy Loss Calculator

The solar panel will produce the most energy when the sun's rays fall perpendicular to its surface. The better the location, orientation and angle of the solar panels, the greater their efficiency and energy yields.



What Causes a Loss of Solar Energy?

You'll find that solar panels produce less energy when hotspots, micro-cracks, or equipment degradation occur. These issues can reduce panel performance, and if left ...

A detailed study on loss processes in solar cells

Only a small part of the incident solar energy

converts to the electrical power in photovoltaic devices. The majority of the energy loss contributes to the heat generation in ...



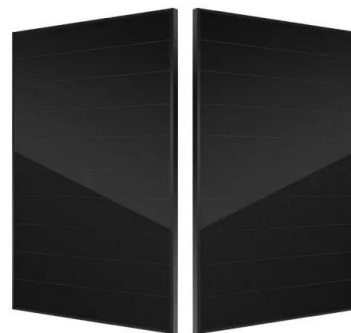
How Solar Panels Have Changed Over Time: A Look ...

Factors Affecting Solar Panel Degradation Solar panel degradation is the gradual loss of efficiency of solar panels over time. Factors impacting efficiency include temperature, UV exposure, and manufacturing ...



Clipping Losses in Solar Inverters: Strategy for Efficiency

It's crucial information for anyone interested in solar energy, tied directly to your panels' efficiency and the energy you might lose. But what exactly is solar clipping, and how ...



Calculation of losses due to temperature and orientation in solar panels

Calculate temperature and orientation losses in solar panels to maximize energy output and improve overall system efficiency.



What is the solar energy loss? , NenPower

The most significant causes of solar energy loss include technical inefficiencies in solar panels, environmental conditions, and system design flaws. Technical inefficiencies ...



Understanding PV System Losses, Part 1: Nameplate

In this series, we'll provide an overview of various causes of energy production loss in solar PV systems. Each article will explain specific types of system losses, drawing from Aurora's ...

What Is LID in Solar Panels? (vs. PID + Anti-LID Techs Explained)

Learn about LID in solar panels, its causes, differences with PID, how to mitigate its effects and whether thin-film panels experience LID.



Why Your Solar Panels Lose Power (And What It Really Means ...

While solar panels do experience natural degradation over time, their reliable performance and warranty-backed efficiency make them a smart long-term investment. With ...



What Causes a Loss of Solar Energy?

You'll find that solar panels produce less energy when hotspots, micro-cracks, or equipment degradation occur. These issues can reduce panel performance, and if left unchecked, lead to significant energy losses over time.



Factors Affecting PV Plants Performance

The maximum electrical energy that can be produced in solar power plants can be determined. If the plant produces less energy than the maximum energy required, it means that there are ...

What is the annual loss rate of solar energy? , NenPower

The annual loss rate of solar energy typically ranges from 1% to 5%, depending on multiple factors. 1. Solar panel degradation is a significant cause of energy loss, impacting ...



What Causes a Loss of Solar Energy?



Causes of energy loss in solar panels range from environmental factors to installation and maintenance issues, but what are they and how can they be fixed?

PV system losses

The Loss diagram offers a visual presentation of your system's cumulative energy losses (solar and electrical). You can read more about how we calculate these losses ...

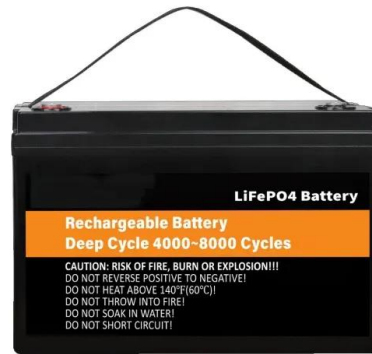


Energy Loss: What Happens to Lost Power?

3. Shift Towards Sustainable Energy Sources
 Transitioning to sustainable energy sources minimizes energy loss and ensures a cleaner energy future. Using solar, wind, ...

Understanding PV System Losses, Part 3: Soiling, ...

Soiling loss is when dust and grime accumulate on solar panels and other PV surfaces over time, lowering the sunlight that reaches the solar panels. Since a PV system's performance is directly tied to how much sunlight can be ...



Why Does Energy Loss Occur in Solar Panels ?

In addition to reducing energy production, pollution can also cause physical damage to solar panels. For example, acid rain can corrode the surface of panels, which, over ...

What is solar energy loss? , NenPower

1. Solar energy loss refers to the reduction in the efficiency of solar energy systems due to various factors. 1. Factors contributing to solar energy loss include shading, ...



12 types of Losses in Solar PV system

NREL research has shown that solar panels have a median degradation rate of about 0.5% per year but the rate could be higher in hotter climates. A good quality solar panel will have low ...

Losses in Solar Panel Systems

Total Solar Panel System Loss All these losses amount to an average total system loss of about 14% for residential solar-energy systems. Let's take a closer look at our example system size. Let's say you install 30 '300-watt' panels for a ...



Understanding Solar Panel Reflection Losses

Solar energy is a vital renewable energy source, and photovoltaic (PV) systems are at the forefront of harnessing this resource. To maximize the efficiency of PV systems, it's crucial to comprehend the factors contributing to energy losses. ...

Top Solar PV Losses: Impacts on Efficiency and Tips to Control

In this article, we will highlight the top solar PV losses, their causes, and their impact on your system performance. Also, we will share some practical tips to minimize these issues and ...



12 types of Losses in Solar PV system

NREL research has shown that solar panels have a median degradation rate of about 0.5% per year but the rate could be higher in hotter climates. A good quality solar panel will have low degradation rates that won't affect the performance of ...



Ultimate guide to utility-scale PV system losses -- ...

What are solar PV system losses and how can you avoid them to maximize the electrical output from your utility-scale plant project?



What Causes the Loss of Solar Energy? Discover Key ...

Solar energy losses arise from factors like shading, dust buildup, electrical resistance, and inefficient solar cell design - maximizing "what causes the loss of solar energy" absorption is key for optimal energy yield.

System Loss Diagram

Aurora's system loss diagram is a breakdown of system losses, showing exactly how much energy is lost at every stage of a design.

Irradiance This category shows the losses in irradiance on the modules in a design. It covers ...



Contact Us

For catalog requests, pricing, or partnerships, please visit:
<https://bialydom.kolobrzeg.pl>