

## European Solar Energy Storage

# What is heat energy needed to melt a solid



## Overview

---

The enthalpy of fusion is a , because, while melting, the heat energy needed to change the substance from solid to liquid does not cause any increase in temperature. Temperature remains constant during the freezing or melting process, and only begins to change again (assuming the energy input or removal (cooling) continues) after the phase change is complete. The latent h.

The enthalpy of fusion is the amount of energy required to convert one mole of solid into liquid. For example, when melting 1 kg of ice (at 0 °C under a wide range of pressures), 333.55 kJ of energy is absorbed with no temperature change.

The enthalpy of fusion is the amount of energy required to convert one mole of solid into liquid. For example, when melting 1 kg of ice (at 0 °C under a wide range of pressures), 333.55 kJ of energy is absorbed with no temperature change.

Why is heat energy needed to melt a solid ?

What is this heat energy called ?

Heat energy is needed to melt a solid because heat energy increases the kinetic energy of particles, which is sufficient enough to break the attraction or bond between the particles and they start moving faster. As a.

In thermodynamics, the enthalpy of fusion of a substance, also known as (latent) heat of fusion, is the change in its enthalpy resulting from providing energy, typically heat, to a specific quantity of the substance to change its state from a solid to a liquid, at constant pressure. The enthalpy of.

The energy needed to melt a unit amount of the substance is the heat of fusion ( $\Delta H_{\text{fus}}$ ). The heat of fusion is usually expressed in the units of joules per gram ( $\frac{\text{J}}{\text{g}}$ ) for the unit amount in grams or in joules per mole ( $\frac{\text{J}}{\text{mol}}$ ) for the unit amount in moles. If heat is.

Heat energy is needed to melt a solid because it provides the energy required to overcome the forces holding the particles together in a solid structure. This

energy is known as the latent heat of fusion. When a solid is heated, its particles start to vibrate more vigorously until they have enough.

Heat energy is needed to melt a solid because it increases the kinetic energy of the particles, causing them to break free from their fixed positions in the solid structure. The heat energy required to melt a solid is called "latent heat of fusion." Heat energy is needed to melt a solid because it.

Introducing heat energy to a solid increases the internal energy of its particles. As a solid absorbs heat, the kinetic energy of its particles increases, causing them to vibrate more vigorously within their fixed positions. This increased vibrational motion stretches and weakens the attractive. Why is heat energy needed to melt a solid?

Heat energy is needed to melt a solid because heat energy increases the kinetic energy of particles, which is sufficient enough to break the attraction or bond between the particles and they start moving faster. As a result, there is a change in the state of matter from solid to liquid. This heat energy is called latent heat of fusion.

Why is heat added at the melting point used?

The heat added at the melting point is used to change the particles from a well-arranged form in the solid to an irregular arrangement in the liquid phase. This process is called the melting of solid. The energy needed to melt a unit amount of the substance is the heat of fusion ( $\Delta H_{\text{fus}}$ ).

Which energy is absorbed during the melting process?

All energy supplied is "directed" to "melting" the solid. During the melting process, solid and liquid exist in equilibrium. The absorbed heat energy during melting is used to weaken the attractive forces between particles and not the kinetic energy of the particles. Melting point is affected by purity of sample and pressure on the sample.

How do you calculate the heat required to melt a solid?

The heat required to melt a solid can be calculated as  $q = L_m m$  (1) where  $q$  = required heat (J, Btu)  $L_m$  = latent heat of melting (J/kg, Btu/lb)  $m$  = mass of substance (kg, lb) The heat required to melt 10 kg of ice to water can be calculated as  $q = L_m m = (334 \times 10^3 \text{ J/kg}) (10 \text{ kg}) = 3340000 \text{ J} = 3340 \text{ kJ}$ .

How does heat change a solid to a liquid?

As you heat up a solid, you are adding energy to the bonds between the solid molecules to the point that you are breaking these bonds. As you keep adding heat, these bonds become weaker, some break, and eventually the solid molecules can now move a bit more freely about. This is the transformation of a solid to a liquid.

How does absorbed heat affect melting point?

The absorbed heat energy during melting is used to weaken the attractive forces between particles and not the kinetic energy of the particles. Melting point is affected by purity of sample and pressure on the sample. When impurities are mixed with a pure substance, the melting point is affected.

## What is heat energy needed to melt a solid



### [FREE] The amount of heat required to melt one mole of a solid is

In chemistry, the term 'heat of fusion' refers specifically to the amount of heat energy required to melt one mole of a solid substance into its liquid form at its melting point, ...

### [Heat of Fusion Calculator](#)

Heat of fusion is a thermodynamic property that quantifies the amount of heat energy required to change one gram of a substance from a solid state to a liquid state at its ...



### Which term describes the amount of heat needed to change 1 kg ...

The term that describes the amount of heat needed to change 1 kg of a substance from solid to liquid at its melting point is known as the latent heat of fusion. Definition: The ...

### [Chapter 5 Flashcards , Quizlet](#)

What do we call the energy used to melt ice once the ice becomes liquid? The latent heat of melting is used to change the state of the water

from ice to liquid water. How much heat energy  
...

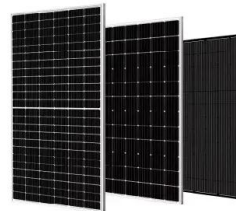


## What is the energy required to go from a solid to a liquid

The energy required to change a solid to a liquid at the melting point is known as the heat of fusion or melting. This energy is used to break the intermolecular forces holding the solid ...

### Heat of Fusion Calculator

To calculate the heat of fusion, divide the heat energy ( $q$ ) required to change a substance's phase by its mass ( $m$ ). The Heat of Fusion Calculator is a valuable tool for determining the heat required to melt a solid or ...



### Latent Heat Calculator

The latent heat calculator helps you compute the energy released or absorbed during a phase transition like melting or vaporizing. In the text below, we explain what is specific latent heat and present a simple latent heat calculation.



## Why is heat energy needed to melt a solid? What is this heat

What is this heat energy called? Solution Heat energy is needed to convert solid into a liquid because heat energy increases the kinetic energy of particles. As the kinetic energy increases, ...



## What is the amount of heat required to change one mole of a ...

Explanation the heat of vaporization, is the amount of energy needed to change a liquid to a gas at constant temperature and pressure. The energy required to melt a solid to a ...



## [Specific Heat Calculator](#)

Specific Heat Calculator Select the parameter, enter the required values, and calculate the specific heat, heat energy, mass of the substance, initial temperature, and final temperature.

### Lithium Solar Generator: \$150



## [10.3: Phase Transitions](#)

For any pure substance, the temperature at which melting occurs--known as the melting point --is a characteristic of that substance. It requires energy for a solid to melt into a liquid. Every pure substance has a certain amount of energy it ...



## 1.9: Heat and changes in physical states of matter

The heat added at the melting point is used to change the particles from a well-arranged form in the solid to an irregular arrangement in the liquid phase. This process is called the melting of solid.



### Why is Heat Energy Needed to Melt a Solid ? What is this Heat

...

Heat energy is needed to melt a solid because heat energy increases the kinetic energy of particles, which is sufficient enough to break the attraction or bond between the particles and ...

### What equation do you use to calculate the heat required to melt a

To calculate the heat required to melt a sample, you need to consider the energy needed to change the phase of the material from solid to liquid. This involves understanding the specific ...





## How to Calculate Amount of Heat Energy Needed to ...

Learn how to calculate amount of heat energy needed to go through two phase changes and see examples that walk through sample problems step-by-step for you to improve your physics knowledge and

### Miami Heat Injury Status

5 ???· Visit ESPN for the current injury situation of the 2025-26 Miami Heat. Latest news from the NBA on players that are out, day-by-day, or on the injured reserve.

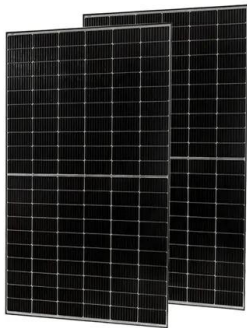


### What is Latent Heat of Fusion?

If unit mass of the substance is considered, the energy required to convert it into a liquid under constant pressure is called the specific heat of fusion for the substance. If the change in ...

## chemistry chapter 14 Flashcards , Quizlet

Terms in this set (28) heat of fusion the energy required to melt a solid at its melting point heat of solution the enthalpy change caused by a dissolving substance Hess's law of heat summation



## Cavaliers 138-83 Heat (Apr 28, 2025) Final Score

Cavs win by 55 points to sweep Heat and finish off most lopsided series in NBA playoff history -- Cleveland moved into Round 2 with the most lopsided series win in NBA playoff history.

## Specific latent heat of fusion (enthalpy of fusion)

The specific latent heat of fusion is therefore dependent on the substance. Figure: Specific heat of fusion of selected substances (gold, silver, tungsten, iron, aluminum, water) ...



## P3 particles end of unit test Flashcards , Quizlet

Study with Quizlet and memorise flashcards containing terms like The energy needed to boil a liquid is known as the latent heat of what?, An ice cube is melting but does not change in ...

## Why is Heat Energy Needed to Melt a Solid ? What is this Heat Energy

Heat energy is needed to melt a solid because heat energy increases the kinetic energy of particles, which is sufficient enough to break the attraction or bond between the particles and ...



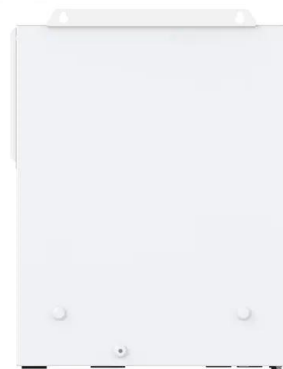
51.2V 300AH

## How is the used to calculate the energy needed to melt a mass of solid

Heat of fusion is the amount of heat energy required to change the state of matter of a substance from a solid to a liquid. It's also known as enthalpy of fusion. How much heat ...

## Why is heat energy needed to melt a solid what is this heat energy

Heat energy is needed to melt a solid because it provides the kinetic energy necessary to break the bonds holding the solid's particles together. This heat energy is called ...



## Cavaliers 138-83 Heat (Apr 28, 2025) Box Score

Box score for the Cleveland Cavaliers vs. Miami Heat NBA game from April 28, 2025 on ESPN. Includes all points, rebounds and steals stats.



## Contact Us

---

For catalog requests, pricing, or partnerships, please visit:  
<https://bialydom.kolobrzeg.pl>