

European Solar Energy Storage

What is equal to incoming solar energy



What is equal to incoming solar energy



What is incoming solar energy also known as?

This term is widely used in the fields of meteorology, climatology, and solar energy research to describe the amount of solar radiation received by a specific area over a ...

Energy: The Driver of Climate

The 70 units of incoming solar radiation make it into Earth's atmosphere. This is equivalent to 240 watts per square meter (70% of 342 W/m²). The atmosphere and clouds ...



Equal® Zero Calorie Sweetener & Sugar Substitutes

Equal is the sweetener substitute you trust to perfectly flavor your favorite beverages without the calories. Visit Equal to learn more!

ATM S 211

Solar radiation incident on the Earth's disk (1370 Watts per square meter) --comparable to energy incident a flat, horizontal surface when the sun is

directly overhead on a clear day.

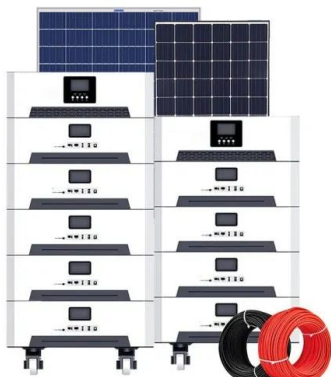


What does equal mean?

one not inferior or superior to another; one having the same or a similar age, rank, station, office, talents, strength, or other quality or condition; an equal quantity or number; as, "If equals be ..."

Equal Symbol (=)

The equals symbol or equal sign is used in mathematics to assert that two expressions have the same value. It is also used in boolean logic as an operator, evaluating true or false based on ...

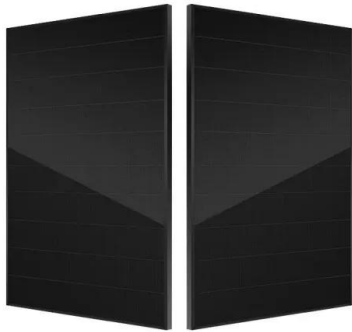


Climate and Earth's Energy Budget

As solar heating and "back radiation" from the atmosphere raise the surface temperature, the surface simultaneously releases an increasing amount of heat--equivalent to ...

chapter 3

Study with Quizlet and memorize flashcards containing terms like the total amount of solar energy absorbed by the earth, solar energy incident on the earth equals what ?, what percent of ...



Climate and Earth's Energy Budget

When the flow of incoming solar energy is balanced by an equal flow of heat to space, Earth is in radiative equilibrium, and global temperature is relatively stable.

GRADE A BATTERY

LiFePO₄ battery will not burn when overcharged/over discharged, overcurrent or short circuited and can withstand high temperatures without decomposition.



Incoming solar radiation: absorption by the atmosphere

Incident solar radiation is the amount of solar energy that has encountered any obstacle to which it has delivered all or part of its energy. The energy that does not reach the ...



Solar Radiation, Heat Budget, and Temperature

The earth's surface primarily receives its energy in the form of short wavelengths. This energy, known as incoming solar radiation or insolation, is absorbed by the ...



Earth's energy budget

Incoming solar energy (shortwave radiation) The total amount of energy received per second at the top of Earth's atmosphere (TOA) is measured in watts and is given by the solar constant ...



Contact Us

For catalog requests, pricing, or partnerships, please visit:
<https://bialydom.kolobrzeg.pl>