

European Solar Energy Storage

Wallis and Futuna bigbattery.com



Overview

Wallis et Futuna est un territoire d'outre-mer français de 264 km² et 1.5 million d'habitants. C'est un territoire d'outre-mer français depuis 1961 et a obtenu le statut de collectivité en 2003.

Wallis and Futuna bigbattery com



Wallis e Futuna

Il territorio di Wallis e Futuna (in francese Territoire des îles Wallis et Futuna o Wallis-et-Futuna [1]; in uveano e futuniano: 'Uvea mo Futuna) è una collettività d'oltremare francese, composto principalmente da tre isole vulcaniche tropicali (Wallis, Futuna e Alofi) con scogliere areali che si trovano nella parte sud dell'oceano Pacifico, fra le isole Fiji e Samoa, con 12 067 abitanti

Wallis and Futuna

Wallis and Futuna, is a group of three volcanic tropical islands--Wallis Island (Uvea), Futuna Island, and Alofi Island--with fringing reefs located in the South Pacific Ocean between Fiji and Samoa, and about two-thirds of the way from Hawaii to New Zealand. The islands are approximately 125 miles (200 kilometers) apart. The small, remote territory of Wallis and ...



Wallis en Futuna

Wallis en Futuna (Frans: Wallis-et-Futuna of Collectivité de Wallis-et-Futuna; Wallisiaans en Futunaans: Uvea mo Futuna) is een Franse overzeese gemeenschap (sinds 2003) in de Grote Oceaan, ten noordoosten van Fiji en ten westen van Samoa. Eerder was het vanaf 1888 een Frans protectoraat, voordat het in 1961 na een referendum een Frans overzees territorium werd.

Kingdoms of Wallis and Futuna

Note: some sources say that Malae and Leava are alternately called Alo and Sigave, respectively. Postal codes: Wallis and Futuna uses five-digit postal codes beginning with 986, according to the French system. Further subdivisions: See the Districts of Wallis and Futuna page.. Uvéa is divided into three districts.



Wallis i Futuna - Wikipedia, wolna encyklopedia

Wallis i Futuna (Terytorium Wysp Wallis i Futuna, fr. Wallis-et-Futuna) - wspólnota zamorska Francji w Oceanii, obejmuj?ca wyspy wulkaniczne Wallis oraz Futuna i Alofi (Wyspy Hoorn) oraz oko?o 20 innych.Znajduje si? w Polinezji, na pó?nocny wschód od wysp Fid?i oraz na zachód od Samoa.. Powierzchnia wysp wynosi 274 km², a zamieszkuje je 11 558 osób (2018).

Wallis

Wallis- och Futunaöarna (franska Îles Wallis et Futuna, walliska och östfutuna Uvea mo Futuna), formellt på svenska Territoriet Wallis- och Futunaöarna [1]) är ett franskt territorium i sydvästra Stilla havet.Huvudort är Mata-Utu.. Området består av två ögrupper som är belägna cirka 250 km ifrån varandra. Grupperna ligger mellan Fiji och Samoa, och räknas till Polynesien.



Wallis And Futuna climate: average weather, temperature, rain

Wallis and Futuna is an archipelago located in the Pacific Ocean at 13-14 degrees south of the Equator and belonging to France. The capital,



Mata Utu, is located on the island of Uv ea (or Wallis). Of the three main islands, Wallis is flat, while in the other two there are hills, which reach 524 meters (1,719 feet) in Futuna and 400 meters

Wallis-et-Futuna la 1 re : actualit s et info en direct de Wallis-et

Suivez toute l'info de Wallis-et-Futuna en direct, regardez les  missions de t l ,  coutez la radio et les podcasts, d couvrez toutes les actus locales, les faits divers, le sport et bien



[Wallis und Futuna - Wikipedia](#)

Wallis und Futuna (franz sisch Wallis et Futuna; manchmal auch Uvea und Futuna) ist ein franz sisches  berseegebiet (Collectivit  d'outre-mer) im s dlichen Pazifik, das aus zwei zwischen Fidschi und Samoa gelegenen Inselgruppen besteht. Die Hauptstadt ist Mata Utu auf Uvea. Das Gebiet besteht aus den drei seit 1961 anerkannten K nigreichen Uvea, Sigave und ...

[Wallis and Futuna](#)

In 1991, BNP Nouvelle-Cal donie, a subsidiary of BNP Paribas, established a subsidiary, Banque de Wallis-et-Futuna, in the territory. Two years earlier Banque Indosuez had closed its branch at Mata-Utu, leaving the territory without any bank. Following this, the Bank of Wallis-and-Futuna (BWF) with its head office in Wallis was created in 1991.



7 Things You Can Strike Off Your Bucket List By Visiting Wallis and Futuna

During the 16 th-century breakup of the Tu'i Tonga Empire, it was the last remaining Tongan stronghold on Wallis Island. Nearby Tonga Toto is a battle site related to this turbulent period of local history. #6. Climb mountains. The tallest peak of Wallis and Futuna is Mont Puke (Mont Singavi) which rises 1,719 feet above sea level.

Wallis e Futuna

Il territorio di Wallis e Futuna (in francese Territoire des îles Wallis et Futuna o Wallis-et-Futuna [1]; in uveano e futuniano: 'Uvea mo Futuna) è una collettività d'oltremare francese, composto principalmente da tre isole vulcaniche tropicali ...



Useful information

Healthcare. Healthcare is free in Wallis and Futuna. The Agence de Santé (Healthcare Agency - ADS) operates two hospitals (Sia in Wallis and Kaleveleve in Futuna) and three dispensaries in the districts of Mua, Hahake and Hihifo (Wallis). You should dial 15 to call the

emergency services. In the event of an emergency, the SIA hospital in Wallis and the Kaleveleve annex ...



Wallis y Futuna

La Colectividad de Wallis y Futuna (francés: Collectivité de Wallis et Futuna) es una colectividad de ultramar francesa (Collectivité d'outre-mer). Es un grupo de tres islas tropicales de origen volcánico situadas en el océano Pacífico Sur, entre Fiyi y Samoa. Entre 1961 y 2003 tuvo estatus de Territorio de Ultramar (Territoire d'outre-mer).

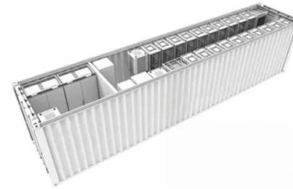


Wallis e Futuna - Wikipédia, a enciclopédia livre

Bandeira não oficial de Wallis e Futuna
Localização. Wallis e Futuna (em francês: Wallis-et-Futuna, pronunciado: [walis?e fytyna]; wallisiano e futunano: Uvea mo Futuna), oficialmente Território das Ilhas Wallis e Futuna (em francês: Territoire des îles Wallis-et-Futuna), é uma coletividade de ultramar da França, situada a leste da Austrália, no oceano Pacífico.

Wallis-et-Futuna la 1ère : actualités et info en direct ...

Suivez toute l'info de Wallis-et-Futuna en direct, regardez les émissions de télé, écoutez la radio et les podcasts, découvrez toutes les actus locales, les faits divers, le sport et bien



Wallis and Futuna , Culture, Facts & Travel ,

A key concern for Wallis and Futuna is an aging population with consequent economic development issues. Very few people aged 18-30 live on the islands due to the limited formal employment opportunities. Improving job creation is a current priority for the territorial government. Industries copra, handicrafts, fishing, lumber

Wallis and Futuna

location map of Wallis and Futuna in relation to France. map of the territory of Wallis and Futuna. aerial view of Wallis Island (Uvea) Futuna Island. Alofi Island. History [edit] drawing of Wallis Island by Captain Samuel Wallis in 1767. coastal view of ...



Wallis ja Futuna - Wikipedia

Wallis ja Futuna eli virallisesti Wallisin ja Futunan yhteisö [1] on Ranskan merentakainen alue eteläisellä Tyynellämerellä. Alue koostuu kolmesta pääsaaresta, Wallisista (Uvéa), Futunasta ja Alofista, sekä noin 20 pienemmästä saaresta ja luodosta. Saarista vain Wallis ja Futuna ovat asuttuja. Wallis ja sen pääkaupunki

Mata-Utu on alueen hallinnollinen keskus.



Traditional skills & crafts

In Wallis and Futuna, the elders possess the skills and knowledge of traditional remedies but their wisdom is less and less often passed down to younger generations. There are three types of remedies differentiated by how they are applied. "Vai" (literally: water), health from plants.



Wallis-et-Futuna -- Wikipédia

Carte de Wallis-et-Futuna. Wallis-et-Futuna est situé dans l'océan Pacifique, en Océanie, dans l'aire culturelle de la Polynésie. Cette collectivité d'outre-mer française a des frontières avec cinq États : la Nouvelle-Zélande, via l'archipel des Tokelau au nord ; les Samoa à l'est, les Tonga au sud-est (archipel des Niuas), les Fidji au sud-ouest, et avec les Tuvalu au nord-ouest [7].



???????

???????(?:Wallis et Futuna),????????????????????
 ??????????????????,?264????????????????1.5?????
 ???,??8000????????????????????????????????
 ???????1961????????(territoire d'outre-
 mer)?2003????????????(collectivité ...



????????????????

???????????????? [4] (???????: Wallis and Futuna;
 ??????????: Wallis et Futuna;
 ??: Uvea mo Futuna)
 ???
 (???????)

Wallis

In Wallis and Futuna, masses are held in church to mark the start of a typical feast day celebration. The next highlight is the customary kava ceremony, generally followed by a katoaga, the presentation of offerings. The day ends with performances of traditional dances. Don't miss the chance to share in a vibrantly colourful day of

LFP12V100



Churches

The only convent in Wallis and Futuna, it was founded in 2003 by Monsignor Lolesio Fuahea. The Wallis Carmel originally housed only six Carmelite sisters from Samoa. Since construction of the convent designed to accommodate them had only just commenced, they were temporarily housed in Malaetoli and were only able to move into their permanent



Wallis and Futuna

There are a few things I thought were under represented which particularly distinguish Wallis & Futuna Islanders from their Pacific neighbors: Veneration of their St. Peter Chanel, The bright & colorful Mats-Wallis, finely wieved white mats-Futuna and the inspiring Wallis & Futuna Soa'mako especially the Futuna version.



Eating Out

Cuisine in Wallis and Futuna blends culinary influences from other Pacific islands such as French Polynesia, so one of our most popular island dishes is fresh fish salad. There are almost endless recipe variations for fish salad but the best-known features coconut milk with diced tomatoes, cucumbers, carrots, onions and lashings of lime.

Schwarze Pumpe Power Plant-BigBattery Lausitz

The Schwarze Pumpe Power Plant-BigBattery Lausitz Battery Energy Storage System is a 50,000kW energy storage project located in Spremberg, Brandenburg, Germany. The rated storage capacity of the project is 53,000kWh. Free Report Battery energy storage will be the key to energy transition - find out how.



**Efficient
Higher Revenue**

- Max. Efficiency 97.5%
- Max. PV Input Voltage 500V
- 100% Peak Output Power
- 2 MPPT Strainers, 150% DC Input Overvoltage
- Max. PV Input Current 11A, Compatible with High Power Modules

**Intelligent
Simple O&M**

- IP66 Protection Degree: support outdoor installation
- Smart I-V Curve Diagnosis Function: locate PV string faults accurately and automatically detect faults
- DC & AC Type-II SPD: prevent lightning damage
- Battery Reverse Connection Protection

**Flexible
Abundant Configuration**

- Plug & Play, EPS Switching Under 10ms
- Compatible with Lead acid and Lithium Batteries
- Max. 6 Units Inverters Parallel
- AFCI Function (Optional): when an arc fault is detected the inverter immediately stops operation

Futuna

Floral necklaces scent the air and play an integral part in local cultural traditions in both Wallis and Futuna. They are closely linked to Oceanian traditions of welcome and hospitality. Flower necklaces, known as "tui se" in the Futunan language, woven mainly from tiale blooms (tiaré in Futunan), mixed with other richly scented flowers

Contact Us

For catalog requests, pricing, or partnerships, please visit:
<https://bialydom.kolobrzeg.pl>