

European Solar Energy Storage

Ti energy storage chip recommendation



Overview

View the TI Battery energy storage system block diagram, product recommendations, reference designs and start designing.

View the TI Battery energy storage system block diagram, product recommendations, reference designs and start designing.

Texas Instruments' solution is the TPS1685, a power management chip that allows data centers to reach the higher power levels required for AI processing. It is the industry's first 48 V integrated hot-swap eFuse with power-path protection.

"While advanced chips drive AI's computational power, analog semiconductors are key to maximizing energy efficiency.

"While advanced chips drive AI's computational power, analog semiconductors are key to maximizing energy efficiency. Our latest power-management innovations are enabling data centers to reduce their environmental footprint while supporting the growing needs of our digital world."

Let's cut to the chase: if you're an engineer, tech enthusiast, or someone sourcing components for IoT devices, energy storage chip model ranking is your golden ticket. These tiny powerhouses are the unsung heroes behind your smartwatch's all-day battery life and your drone's marathon flights. Does Texas Instruments have power management chips?

DALLAS, March 17, 2025 /PRNewswire/ -- Texas Instruments (TI) (Nasdaq: TXN) today debuted new power-management chips to support the rapidly growing power needs of modern data centers. As the adoption of high-performance computing and artificial intelligence (AI) increases, data centers require more power-dense and efficient solutions.

What types of energy storage systems can ti support?

With advanced battery-management, isolation, current-sensing and high-voltage power-conversion technologies, we support designs ranging from

residential, commercial and industrial systems to grid-scale systems with voltages as high as 1,500V. Why choose TI for your energy storage system designs?

.

What is Ti tps1685?

TI's new TPS1685 is the industry's first 48V integrated hot-swap eFuse with power-path protection to support data center hardware and processing needs. To simplify data center design, TI also introduced a new family of integrated GaN power stages, the LMG3650R035, LMG3650R025 and LMG3650R070, in industry-standard TOLL packaging.

What is Ti tps1685 hot-swap eFuse?

TI is showcasing these devices at the 2025 Applied Power Electronics Conference (APEC), March 16-20, in Atlanta, Georgia. TI's new TPS1685 hot-swap eFuse supports more efficient and power-dense data centers. For more information, see ti.com/TPS1685, ti.com/LMG3650R035 and ti.com/LMG3650R070.

What is a ti eFuse?

TI's 48V stackable integrated hot-swap eFuse with power-path protection empowers designers to tackle high-power (>6kW) processing needs with a scalable device that simplifies design and reduces solution size by half compared to existing hot-swap controllers in the market.

How does Ti eFuse work?

TI's 48V stackable integrated hot-swap eFuse with power-path protection empowers designers to tackle high-power (>6kW) processing needs with a scalable device that simplifies design and reduces solution size by half compared to existing hot-swap controllers in the market.

Ti energy storage chip recommendation



Texas Instruments Introduced Advanced Power Management Chips ...

"While advanced chips drive AI's computational power, analog semiconductors are key to maximizing energy efficiency. Our latest power-management innovations are enabling data centers to reduce their environmental footprint ...

New power management chips from TI maximize protection, ...

"While advanced chips drive AI's computational power, analog semiconductors are key to maximizing energy efficiency. Our latest power-management innovations are enabling data centers to reduce their environmental footprint ...



Focusing on new energy storage needs, Texas Instruments chip ...

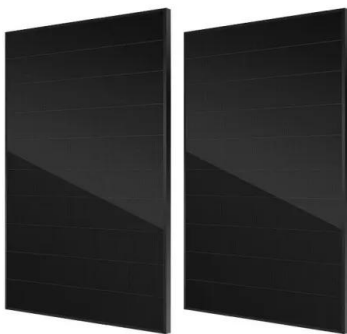
As China continues to deepen its power market reform in the future, TI will continue to focus on two aspects in the field of energy storage to meet the energy storage needs brought about by new infrastructure.



TI Offers 48 V Power

Management Chips for AI Data Center Design

Texas Instruments' solution is the TPS1685, a power management chip that allows data centers to reach the higher power levels required for AI processing. It is the industry's first 48 V integrated hot-swap eFuse with power-path protection.



TI Offers 48 V Power Management Chips for AI Data

...

Texas Instruments' solution is the TPS1685, a power management chip that allows data centers to reach the higher power levels required for AI processing. It is the industry's first 48 V integrated hot-swap ...

Ti energy storage solution

This reference design uses TI's TPS25942 on the input side to control inrush, protect against over voltage, under voltage, short circuits, and prevent stored energy from flowing back to a shorted input bus.



Energy storage systems design resources , TI

This technical article explains how to use a combined solar energy generation and battery energy storage system to make energy available when solar power is not sufficient to support demand.



Energy Storage Chip Model Ranking: The Ultimate 2024 Guide

Let's cut to the chase: if you're an engineer, tech enthusiast, or someone sourcing components for IoT devices, energy storage chip model ranking is your golden ticket. These tiny powerhouses are the unsung heroes behind your smartwatch's all-day battery life and your drone's marathon flights.



Power Management for Energy Harvesting

This presentation will give a brief overview of some existing energy harvesting technologies and applications. It will also cover energy storage options and key considerations and specifications for power analysis and power management.

Contact Us

For catalog requests, pricing, or partnerships, please visit:
<https://bialydom.kolobrzeg.pl>