

European Solar Energy Storage

Taiwan albesol inc



Taiwan albesol inc



Albesol

Very early on, Albesol became a partner to Schneider Electric, worldwide known as a leader in the electrical market. Throughout the years, we managed tremendous growth and expansion, and in 2018 we introduced our company to the Canadian market as Albesol INC, thus becoming the first licensed partner of Schneider Electric in North America.

Albesol INC. on LinkedIn: #albesol #ecoxpert #panelbuilder

A new project, ready to deliver #QED-2, Swb customized by #Albesol INC, integrating and testing all contolls as per clinet request - Ampacity ratings: 400A - 5000 A - System voltage: 208Y/120V



ALBESOL INC : carrières et emplois , Indeed

Découvrez ce qui fonctionne bien chez ALBESOL INC d'après les personnes qui sont le mieux placées pour le savoir. Obtenez des informations sur les postes, les salaires, la localisation des bureaux ainsi que sur la vision de la Direction. Comparez la rémunération des postes les plus courants et renseignez-vous sur l'équilibre vie professionnelle / privée de l'équipe.

Albesol INC. on LinkedIn:

#sustainability #albesol ...

A partnership that ensured #sustainability . Another successful project mixing the new IEC61499 standard from Industry (Event-driven) in an Automatic transfer... , 10 comments on LinkedIn

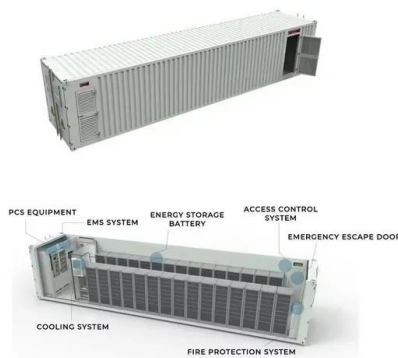


Albesol INC. on LinkedIn: #schneiderelectric , 26 comments

Albesol Inc is happy to announce starting a new collaboration with #schneiderelectric Canada Today with Anthony Arrigucci " Panel Builder Chanel Manager", we

Albesol

Our main focus at Albesol INC is to be the most reliable, flexible and cost-reducing source for Premset medium voltage Switchgear and modular system electrical cabinets. When we first started the business as Albesol Shpk in ...



ALTIVAR PROCESS MODULAR AND HARMONY CUSTOMIZATION

Altivar(TM) Process Modular is a services-oriented variable speed drive designed to improve equipment performance, reduce operating costs by enabling process optimization, predictive maintenance and improve energy consumption.

**Albesol INC. on LinkedIn:
 #albesol #lifeison**

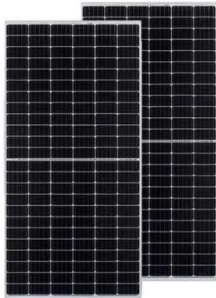
Another MCP (Motor Control Panel) ready to deliver manufactured by #albesol inc Universal enclosures Schneider Electric SF - ATV320D11S6C (Variable speed drive, Altivar Machine ATV320, 11 kW

LFP12V100



[Ehad Ramadani](#)

Plant Manager at Albesol Inc. · Hard working professional with a Bachelor of Science Degree in Electrical Engineering with a focus in Power Systems and Industrial Automation. · Experience: Albesol Inc · Education: Universiteti Politeknik i Tiranës · Location: Mississauga · 500+ connections on LinkedIn. View Ehad Ramadani's profile on LinkedIn, a professional ...



**Albesol INC. on LinkedIn:
 #albesol #schneiderelectric**

Another MCP (Motor Control Panel) ready to deliver manufactured by #albesol inc Universal enclosures Schneider Electric SF - ATV320D11S6C (Variable speed drive, Altivar Machine ATV320, 11 kW



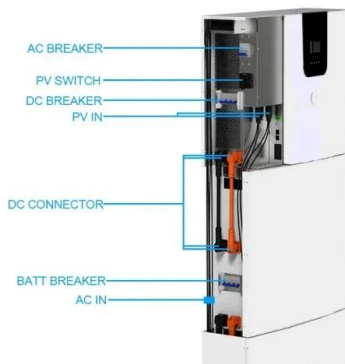
Products

MEDIUM VOLTAGE SWITCHGEAR UP 150KV. A global player with local capabilities Schneider Electric has 160,000 people in more than 100 countries dedicated to delivering reliable products and solutions.



Albesol INC. on LinkedIn:
#albesol #sustainability
#power #event #

A new project, ready to deliver #QED-2, Swb customized by #Albesol INC, integrating and testing all contolls as per clinet request - Ampacity ratings: 400A - 5000 A - System voltage:



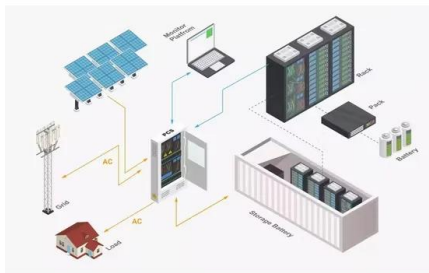
[Shpetim Shehu](#)

General Manager Albesol shpk · Experienced Administrator with a demonstrated history of working in the civil engineering industry. Skilled in Negotiation, Business Planning, Legal Writing, English, and Management. Strong information technology professional graduated from Economy University of Tirane · Experience: Albesol shpk · Education: Universiteti Bujqësor i Tiranës · ...

Albesol INC. on LinkedIn:
Proud to be Partner of
#SchneiderElectric

Albesol Inc is a licensed partner for the Schneider Electric in the Canadian market. I saw first hand their factory, spent time with their leadership,

and heard about the success this partnership



Albesol INC. on LinkedIn: #schneiderelectric #albesol , 56 ...

A new project, ready to deliver #QED-2, Swb customized by #Albesol INC, integrating and testing all contolls as per clinet request - Ampacity ratings: 400A - 5000 A - System voltage: 208Y/120V

Albesol Inc (Imia Job Canada) Employer in Canada

Our main focus at Albesol INC is to be the most reliable, flexible and cost-reducing source for Premset medium voltage Switchgear and modular system electrical ...



[Albesol INC.'s Post](#)

A new project, ready to deliver #QED-2, Swb customized by #Albesol INC, integrating and testing all contolls as per clinet request - Ampacity ratings: 400A - 5000 A - System voltage: 208Y/120V



About Us

Our main focus at Albesol INC is to be the most reliable, flexible and cost-reducing source for Premset medium voltage Switchgear and modular system electrical cabinets. When we first ...



Chief Executive Officer

View Albesol INC.'s profile on LinkedIn, a professional community of 1 billion members. Artan Pulti-Chief Executive Officer & Owner · Experience: Albesol Energy INC · Education:

About us

The Company Albesol is a private Company operating in Power and Energy Business. The company was founded in 2006 as Energy Solution and since 2014 operate under "During the ...



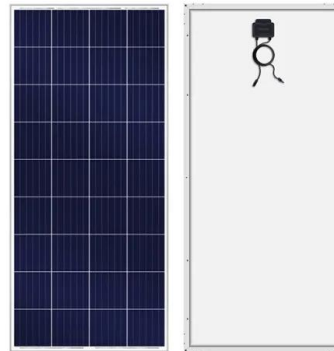


Albesol INC. on LinkedIn: #schneiderelectric #albesol , 56 comments

A new project, ready to deliver #QED-2, Swb customized by #Albesol INC, integrating and testing all contolls as per clinet request - Ampacity ratings: 400A - 5000 A - System voltage:

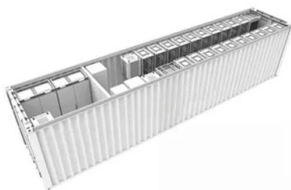
Albesol Inc Jobs (with Salaries) , Indeed Canada

albesol inc jobs. Sort by: relevance - date. 1 job. accounting bookkeeper. Albesol INC. Mississauga, ON L4W 2R4. \$28.50 an hour. Full-time +2. Experience: 2 years to less than 3 years. Calculate and prepare cheques for payroll. Calculate fixed assets and depreciation. Prepare trial balance of books.



 TAX FREE

1-3MWh
 BESS



Albesol

The Company Albesol is a private Company operating in Power and Energy Business. The company was founded in 2006 as Energy Solution and since 2014 operate under "During the first year's, focus was given on implementation of the projects in main power sector as KESH - Albanian Power Corporation, (Hydro Power Plants) OST - Transmit ion Operator System, ...

Projects - Albesol

ALBESOL-INC PRESS RELEASE. Schneider Electric Canada and Albesol partner to provide Medium Voltage Premset equipment for customers. Schneider Electric signs Licence Partner

agreement with Albesol Albesol becomes the first Master MV EcoXpert in Canada From left to right: Anthony Arrigucci (Panel Builder Channel Manager, Schneider Electric); Isabelle Tribote



Albesol INC. on LinkedIn: #albesol #sustainability #power #event ...

A new project, ready to deliver #QED-2, Swb customized by #Albesol INC, integrating and testing all contolls as per clinet request - Ampacity ratings: 400A - 5000 A - System voltage: 208Y/120V

Albesol Inc (Imia Job Canada) Employer in Canada

Our main focus at Albesol INC is to be the most reliable, flexible and cost-reducing source for Premset medium voltage Switchgear and modular system electrical cabinets. When we first started the business as Albesol Shpk in 2006, in Albania, one of our main goals was to expand the company in a way that allowed us to be involved in manufacturing



Albesol INC. on LinkedIn: #premsetmvswitchgear ...

Albesol Inc is a licensed partner for the Schneider Electric in the Canadian market. I saw first hand their factory, spent time with their leadership, and heard about the success this partnership



Contact Us

For catalog requests, pricing, or partnerships, please visit:
<https://bialydom.kolobrzeg.pl>