

European Solar Energy Storage

Svalbard and Jan Mayen rivus energy

DISTRIBUTED PV GENERATION + ESS



Overview

ISO 3166-2:SJ and ISO 3166-2:SJM (ISO 3166-1 numeric: 744) are statistical designations defined by ISO 3166-1 for a collective grouping of two remote jurisdictions of Norway: Svalbard and Jan Mayen.

What does Svalbard and Jan Mayen stand for?

Svalbard and Jan Mayen (Norwegian: Svalbard og Jan Mayen, ISO 3166-1 alpha-2: SJ, ISO 3166-1 alpha-3: SJM, ISO 3166-1 numeric: 744) is a statistical designation defined by ISO 3166-1 for a collective grouping of two remote jurisdictions of Norway: Svalbard and Jan Mayen.

What do Svalbard and Jan Mayen have in common?

Svalbard and Jan Mayen have in common that they are the only integrated parts of Norway not allocated to counties. While a separate ISO code for Svalbard was proposed by the United Nations, it was the Norwegian authorities who took initiative to include Jan Mayen in the code. Its official language is Norwegian.

What is a Svalbard & Jan Mayen islands?

The United Nations Statistics Division also uses this code, but has named it the Svalbard and Jan Mayen Islands. Svalbard is an archipelago in the Arctic Ocean under the sovereignty of Norway, but is subject to the special status granted by the Svalbard Treaty.

What is Svalbard & Jan Mayen in ISO 3166-2?

ISO 3166-2:SJ is the entry for Svalbard and Jan Mayen in ISO 3166-2, a system for assigning codes to subnational administrative divisions. However, further subdivision for Svalbard and Jan Mayen occurs under Norway's entry, ISO 3166-2:NO:.

Are Longyearbyen and Svalbard facing an energy transition?

Top image: Longyearbyen and Svalbard are facing an energy transition. This is the background for the cooperation agreement between UNIS, Store Norske and SINTEF. Photo: Graham Gilbert/UNIS. Longyearbyen and Svalbard are

facing a huge energy transition.

How can Svalbard maintain a secure and sustainable supply?

Furthermore, the case found that the best long-term solution for Svalbard to maintain a secure and sustainable supply would be to integrate a mix of renewable energy technologies. Some of these technologies include: solar panels (PV), wind turbines, heat pumps connected to geothermal and both heat and electricity storage.

Svalbard and Jan Mayen rivus energy



Deep-sea mining to support green transition? The ...

The area potentially concerned stretches from Svalbard to Jan Mayen Island, covering 280 000 square kilometers of Arctic seabed. Despite protests and warnings from environmental organizations, scientists and many ...

Svalbard Case Study

Under the terms of the Svalbard Treaty recognising Norway's sovereignty, anyone can live in the archipelago without a visa, laeding to a demographic shift with English, Thais, Germans and Italians now living in Svalbard. ...



Energy in Svalbard and Jan Mayen

When it comes to Energy in Svalbard and Jan Mayen, the Refined petroleum products exports is whereas, the Refined petroleum products imports is . Factbook. Open main menu. Home; Africa; Europe; Check all different factbooks for Svalbard and Jan Mayen below. Svalbard and Jan Mayen Factbook; The Economy of Svalbard and Jan Mayen;

Svalbard and Jan Mayen

Svalbard and Jan Mayen (Norwegian: Svalbard og Jan Mayen, ISO 3166-1 alpha-2: SJ, ISO 3166-1

alpha-3: SJM, ISO 3166-1 numeric: 744) is a statistical designation defined by ISO 3166-1 for a collective grouping of two remote ...



(PDF) Svalbard and Jan Mayen , Tormod Klemsdal

8.1.1 Svalbard and Jan Mayen Tormod Klemsdal
 1. Introduction The Svalbard archipelago lies about 700 km north of Norway between 74°N and 81°N and between 10°E and 35°E (> Fig. 8.1.1.1). Proceedings of The European Physical Society Conference on High Energy Physics -- PoS(EPS-HEP 2013), 2014. download Download free PDF View PDF chevron



Svalbard Brenneri , Longyearbyen Svalbard and Jan Mayen

Svalbard Brenneri, Longyearbyen. 132 likes.
 Coffee roasting place in the northern most town in the world. We aim to provide good specialty coffee



Svalbard and Jan Mayen Islands , Tracking SDG 7

1 World Bank Income Classification as of the Fiscal Year 2023 2 GDP, Power Purchasing Parity (constant 2017 international \$) from the World Development Indicators 3 Population, total from the World Development Indicators



Svalbard e Jan Mayen

Svalbard e Jan Mayen (in norvegese Svalbard og Jan Mayen) è una classificazione statistica definita dallo standard ISO 3166-1 [1] di due territori insulari della Norvegia settentrionale (Isole Svalbard e Jan Mayen). Svalbard e Jan Mayen sono anche accomunate dallo stesso dominio di primo livello nazionale, .sj.



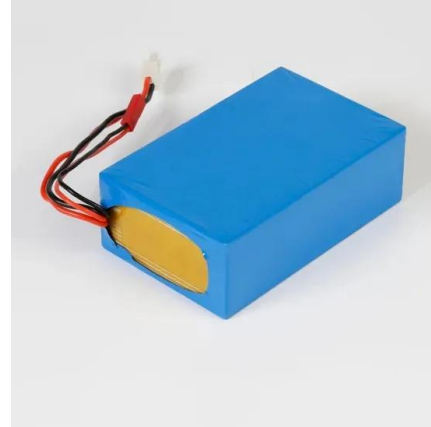
Svalbard und Jan Mayen

Im norwegischen Sprachgebrauch heißt die Inselgruppe Svalbard („kühle Küste“). Jan Mayen ist eine 373 km² große Insel ca. 650 km nordöstlich von Island in der Grönlandsee und ist politisch gesehen ein integraler Teil Norwegens, gehört jedoch zu keiner der norwegischen Provinzen. Die Inselgruppe Spitzbergen liegt nördlich des



Smak Svalbard , Longyearbyen Svalbard and Jan Mayen

Smak Svalbard, Longyearbyen. 2,167 likes · 2 talking about this. Et kulinarisk mekka der små og store lokale aktører virkelig tilbyr mange unike arrangement, works Smak Svalbard , Longyearbyen Svalbard and Jan Mayen



Freelance renewable energy design jobs svalbard and jan mayen ...

Suchen Sie nach Stellenangeboten im Zusammenhang mit Freelance renewable energy design jobs svalbard and jan mayen, oder heuern Sie auf dem weltgrößten Freelancing-Marktplatz mit 23Mio+ Jobs an. Es ist kostenlos, sich zu registrieren und auf Jobs zu bieten.

Svalbard and Jan Mayen

Jan Mayen is a volcanic island in the Arctic Ocean located at the border of the Norwegian Sea and the Greenland Sea. The single island covers an area of 377 square kilometres (146 sq mi) and is dominated by the 2,277-metre (7,470 ft) tall Beerenberg volcano. The island's only population is a combined military and meteorological outpost that operates a LORAN-C ...



List of mammals of Svalbard and Jan Mayen

This is a list of mammal species recorded in Svalbard and Jan Mayen. There are seventeen mammal species in Svalbard and Jan Mayen, of which three are endangered and three are vulnerable. [1] The following tags are used to

highlight each species' conservation status as assessed by the International Union for Conservation of Nature: EX:



Svalbard and Jan Mayen , DOPA Explorer

Svalbard and Jan Mayen. 744. SJM. DOPA Explorer is the Joint Research Centre's web based information system on the world's protected areas, which helps the European Commission and other users to assess the state of and the pressure on protected areas at multiple scales.



Top places in Svalbard and Jan Mayen

Svalbard and Jan Mayen islands guarantee you sun, magical beaches, and unique cultural heritage. There is hardly a place less traveled by tourists. The Berenberg peak dominates the island's panorama - it is the world's northernmost active surface volcano. Jan Mayen is uninhabited. The only inhabitants of the island are the Norwegian weather station staff, to ...

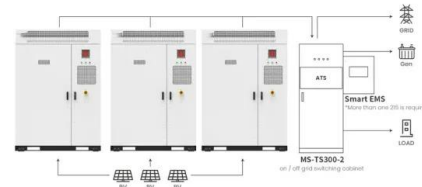
Svalbard i Jan Mayen - Wikipedia, wolna encyklopedia

Svalbard i Jan Mayen (norw. Svalbard og Jan Mayen, ISO 3166-1 alfa-2: SJ, ISO 3166-1 alfa-3: SJM, ISO 3166-1 numeryczny: 744) jest nazwą statystycznej jednostki zdefiniowanej w ISO

temperatures in Longyearbyen typically range from 41°F to 47°F

Svalbard and Jan Mayen

Svalbard and Jan Mayen (Norwegian: Svalbard og Jan Mayen, ISO 3166-1 alpha-2: SJ, ISO 3166-1 alpha-3: SJM, ISO 3166-1 numeric: 744) is a statistical designation defined by ISO 3166-1 for a collective grouping of two remote jurisdictions of Norway: Svalbard and Jan Mayen. While the two are combined



Application scenarios of energy storage battery products

Svalbard will be a showcase for renewable energy ...

Longyearbyen and Svalbard are facing a huge energy transition. UNIS, Store Norske and SINTEF have therefore entered into an agreement on strategic cooperation within renewable energy systems adapted to Arctic ...



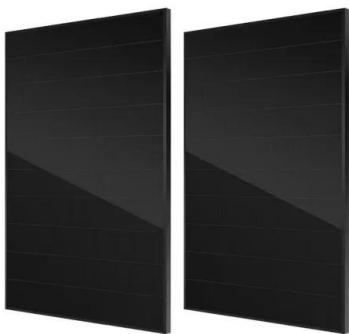
Svalbard and Jan Mayen Tax Calculator 2024 , iCalculator(TM) SJ

Discover Svalbard and Jan Mayen. Svalbard and Jan Mayen are two territories under Norwegian sovereignty, located in the Arctic Ocean. Svalbard is an archipelago situated about midway between continental Norway and the North Pole, known for its rugged terrain, glaciers, and polar bears. Jan Mayen is a remote island located further to the west, approximately 950 kilometers ...



????????????????????

masse terrestre correspond à environ 11% de la taille de la France. Svalbard et Jan Mayen est ainsi le 25e plus grand pays d'Europa et le 126e au



Arctic Towns in Transition: Norway's commitment towards a new ...

Svalbard and Jan Mayen, with their unique geographical and environmental characteristics, offer promising opportunities for emerging industries and investment prospects. [...]

[Svalbard és Jan Mayen - Wikipédia](#)

Svalbard és Jan Mayen helyzete a földgömbön. Svalbard és Jan Mayen az ISO 3166 szabvány szerinti norvég statisztikai egység. Bár az ISO egyesíti a két területet egy egységben, közigazgatásilag nem kapcsolódnak egymáshoz. Az ISO 3166-1 szabványban Svalbard és Jan Mayen SJ alfa-2 kóddal, SJM alfa-3 kóddal és 744 numerikus



???????

????????(???Svalbard og Jan Mayen,ISO 3166-1
 ??????:SJ,ISO 3166-1 ??????:SJM,ISO 3166-1 ??????
 ?;744)????????????????,????????????????????
 ?????????????????????,????????????????????
 ???;sj????????? ...



- Voltage range: 691.2-947.2V
- >6000 cycles (100% DOD)
- Rated battery capacity: 216KWH (customizable)
- EMS communication: 4G/CAN/RS485

???????

???????(???: Svalbard og Jan Mayen, ISO 3166-1
 ??????:SJ, ISO 3166-1 ??????:SJM, ISO 3166-1 ??????
 ? :744)????????????????????,????????????????????????????
 ? ?????????????????????????????,?????????????????



Svalbard Case Study

Under the terms of the Svalbard Treaty recognising Norway's sovereignty, anyone can live in the archipelago without a visa, laeding to a demographic shift with English, Thais, Germans and Italians now living in Svalbard. Opportunities for development in Svalbard. Svalbard has a range of development opportunities. Mineral Extraction in Svalbard

(PDF) Svalbard and Jan Mayen , Tormod Klemsdal

As the ocean currents meet around the island, air masses and air currents also converge, producing strong winds and a high wave energy along the coast of the island. From Iceland the North-Atlantic Midoceanic Ridge ...



Contact Us

For catalog requests, pricing, or partnerships, please visit:
<https://bialydom.kolobrzeg.pl>