

European Solar Energy Storage

Spectra power system Western Sahara



Overview

What is Western Sahara's green power capacity?

Western Sahara's current green power capacity is about 1.3 gigawatts, or about a quarter of the nation's total renewables capacity. A project to develop a 3-gigawatt cable linking renewable plants in the territory to central Morocco has attracted interest from private investors, said the official.

How does Saharan wind work?

Saharan wind regularly intensifies during nighttime periods, in each season. Anti-correlations between integrated solar and wind resources improve the smoothness. The total output power loss at an optimal resource combination is low. wind turbines have a hub height between 80 and 120 m).

Will Morocco double green electricity production in Western Sahara?

(Bloomberg) -- Morocco, buoyed by recent foreign recognition of its rule over Western Sahara, plans to double green electricity production in the disputed territory to meet growing demand before it co-hosts the 2030 FIFA World Cup.

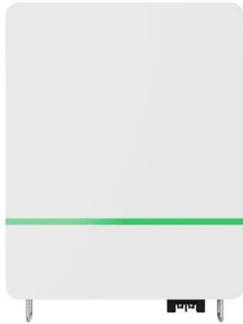
How strong is the wind over the Sahara?

Wind speeds at 100 m height over the Sahara are as strong as over open sea. Spatial correlation lengths for the wind fields are extremely large. Saharan wind regularly intensifies during nighttime periods, in each season. Anti-correlations between integrated solar and wind resources improve the smoothness.

Why do flow fields have large coherent structures over the Sahara?

Indeed, the flow fields exhibit very large coherent structures, particularly over the Sahara. Such wind velocity patterns are strongly related to the continental scale westward and northward dust transport [34, 35]. Fig. 3.

Spectra power system Western Sahara



Morocco: Another renewable energy project in ...

The initial stages of another renewable energy project has been launched in the disputed Western Sahara region, which is under the control of Morocco. The Janassim project recently launched its measuring campaign ...

Harnessing Solar Power in the Sahara Desert , African Sahara

From an environmental perspective, solar power in the Sahara Desert has the potential to reduce greenhouse gas emissions from fossil fuel-based power generation. By displacing coal, oil, ...

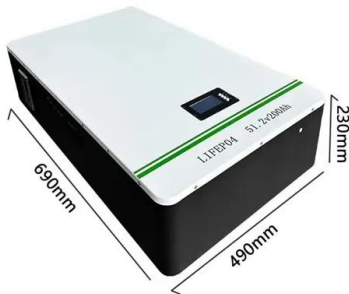


Service Parts & Consumables

Below is a list of common consumable parts for our laser systems. To order consumable parts or ask any questions, please contact Customer Service. Ultrafast Lasers. Part Number Description Product Compatibility; 90019175: J-Series Power Supply Air Filters J40/J80 (Qty 3) Millennia Mai Tai: 0135-1923S: TCU Purge Filter: Spitfire Solstice Ace

Combined wind-solar electricity production potential over north ...

The temporal resolutions of 3 h for the whole study area, or 1 h for Western Sahara are not fine enough to consider issues in power system operation (usually based on ...



Spirit-NOPA® Optical Parametric Amplifier

Overview The Spirit-NOPA is a family of automated non-collinear optical parametric amplifiers (NOPA) specifically built and optimized for the industry-proven Spirit® HE and Spirit® One(TM) ultrafast lasers. The turn-key, high repetition rate Spirit femtosecond laser combines with the Spirit-NOPA to create a powerful, user-friendly tunable, high repetition rate source of ultrashort ...

MKS Boosts Industry-Leading Power for Quantum Applications ...

Andover, MA - February 4, 2020 - MKS Instruments, Inc. (NASDAQ: MKSI) introduces new improved industry-leading specifications on its Spectra-Physics® Matisse® family of tunable lasers with the highest power of >7.2 W, widest mode-hop ...



Renewable energy and electricity incapacitation in sub-Saharan ...

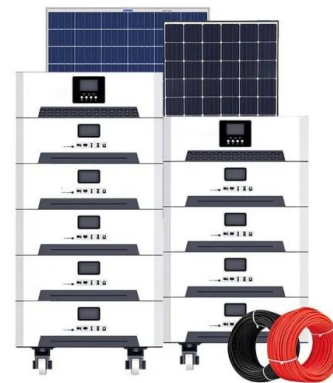
Onshore wind turbines, solar PV, concentrated

solar power (CSP), biomass power plants, and geothermal power plants are the specific technologies considered in this ...



Spectra Geospatial

Get to know the powerful Spectra Geospatial® FOCUS 35 Series Total Stations. This fully robotic motorized solution provides improved speed, accuracy and precision in measurement. A robotic instrument moves the power of the observer from the instrument to the range pole improving the quality of your work. The FOCUS 35 is now available in three



MKS Debuts Powerful New >100 W UV Nanosecond Laser

Andover, MA - - June 26, 2023 - MKS Instruments, Inc.(NASDAQ: MKSI) introduces its Spectra-Physics® Talon® Ace (TM) UV100 laser, a powerful new pulsed nanosecond laser, delivering an industry-leading >100 W UV power with compelling cost-performance in a small form factor. The new laser delivers unprecedented flexibility, including TimeShift(TM) programmable pulse ...

Spectra Aerospace & Defense Acquires Galleon Embedded ...

ALPHARETTA, Georgia - August 12, 2021 - Spectra A& D Holdings LLC ("Spectra"), a diversified designer and manufacturer of highly-

engineered avionics and electronics solutions for leading aerospace and defense platforms, today announced the acquisition of Galleon Embedded Computing AS ("Galleon"). Galleon is the first strategic add



Excelsior® CW Laser

Output power is variable via analog power supply. Specifications apply at nominal power level to 50% of nominal power. Recommended power range 10-100% of nominal power. Excelsior 488 available as fixed power version only. Power supply must meet following requirements: - DC Voltage 5 and 12 VDC $\pm 5\%$ - Power 30 W for 5 VDC, 60 W for 12 VDC



Power

First Independent Power Ltd ("FIPL") With a 70% stake in FIPL (comprises of 4 power plants) located in Rivers State, Nigeria, we have a total generation capacity of about 720MW from all the plants. Trans Amadi. Trans-Amadi plant has a total installed capacity of 136MW. The plant was commissioned in 2 phases.



Ascend ® High Power kHz Green Pump Lasers

Ascend configurations can be to maximize the utility of your amplifier system. The Ascend flexibility means you can design experiments anywhere in the 1 to 10 kHz repetition rate range. Ascend is available in >60 W and >40 W output power levels to support your specific amplifier system configuration and requirements.



- IP65/IP55 OUTDOOR CABINET
- WATERPROOF OUTDOOR CABINET
- 42U/27U
- OUTDOOR BATTERY CABINET

Spectra-Physics Home

Spectra-Physics is a brand within the MKS Instruments Photonics Solution division. The Spectra-Physics product portfolio consists of a broad spectrum of lasers for precision industrial and scientific research applications. (NASDAQ: MKSI) is a global provider of instruments, systems, subsystems and process control solutions that measure



Harvesting Solar Power in the Sahara , African Sahara

Developing solar power in the Sahara could transform the region into a renewable energy hub, contributing to global efforts to reduce carbon emissions and mitigate climate change. This ...

RAPTOR Fiber Optic Recorder Revolutionizes F-35 Program

Las Cruces, New Mexico - August 20th, 2024 We are excited to announce that CALCULEX has successfully initiated the delivery process of the RAPTOR Fiber Optic Recorder and is now ready for integration into the world's most advanced fighter jet, the multi-role F-35 Lightning II. This state-of-the-art high-speed data recorder is set

to revolutionize the Read ...



MKS Launches High Power, High Energy Spectra-Physics

Andover, MA - February 4, 2020 - MKS Instruments, Inc.(NASDAQ: MKSI)) introduces its Spectra-Physics® Spirit® 1030-140, an industrial femtosecond hybrid fiber laser that delivers >140 W power and >600 μJ pulse energy with ultrashort . 400 fs pulses in the infrared.. With the high performance and added flexibility with adjustable repetition rates from single shot up to 30 ...

Green Colonialism In Western Sahara

Morocco exploits land, air and sea in Western Sahara despite having no sovereignty over it. Western Sahara is connected to the Moroccan grid via the capital Laayoune. A new 400kV power connection is planned between Laayoune and Dakhla, and to Mauritania. Through this power-line, Morocco plans to export renewable energy to West Africa.



LIDAR

The key component of a quality LIDAR system is the laser source transmitting the beam. Spectra-Physics' VGEN-SP LIDAR fiber lasers incorporate

state-of-the-art technology for top performance in technically demanding LIDAR and range ...



Harnessing Solar Power in the Sahara Desert , African Sahara

The Sahara Desert, spanning over 9 million square kilometers across North Africa, is the world's largest hot desert. It encompasses parts of Algeria, Chad, Egypt, Libya, Mali, Mauritania, Morocco, Niger, Western Sahara, Sudan, and Tunisia. The region is characterized by extreme heat, arid conditions, vast sand dunes, and rocky plateaus. The Sahara's abundant sunlight and



AKTA Start FPLC System with Frac30 or F9-C Fraction Collector

AKTA start FPLC fits neatly on your bench-top and has a front-facing work area that allows easy access to the system. Run AKTA start at the touch of a button using the intuitive touchscreen. AKTA F9-C Fraction Collector Flexible fraction collector for use with AKTA pure. Collects up to 576 fractions in deep-well plates, tubes,...



Tornado Spectral Systems

Laser Power: 20 mW up to 495 mW; Spectral Range: 200 cm⁻¹ to 3300 cm⁻¹ (Raman shift from 785 nm excitation) Probes: Immersion and Non-Contact; Input Power Requirements: 100 V

to 240 V AC line power; Storage Temperature:
-20 to +50 degrees Celsius (...



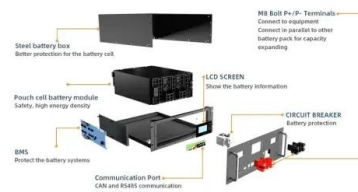
Spitfire Ace CEP6 Regenerative Amplifier

To verify and analyze the output power of your Spitfire Ace CEP6 laser, we recommend the Ophir L50(150)A-PF-35 (7Z02737) thermal power sensor and Centauri laser power meter. Additional information on this laser measurement ...



Tornado Spectral Systems

Laser Power: 20 mW up to 495 mW; Spectral Range: 200 cm⁻¹ to 3300 cm⁻¹ (Raman shift from 785 nm excitation) Probes: Immersion and Non-Contact; Input Power Requirements: 100 V to 240 V AC line power; Storage Temperature: ...



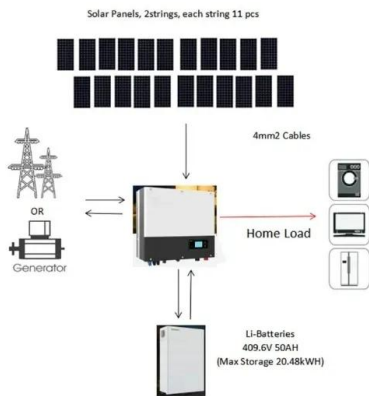
VSC forms Spectra A& D with the merger of 3 companies

"Spectra's engineering and technical capabilities, combined with its proprietary products, are differentiated in the market," said Brian Martin, Managing Partner at Vance Street. "We plan to leverage our prior aerospace and defense technology experience, network, and resources to help Bob grow Spectra organically and

through acquisition."

Western Sahara: Energy System Overview

GOAL: to promote an understanding, on a global scale, of the dynamics of change in energy systems, quantify emissions and their impacts, and accelerate the transition ...



Harnessing Solar and Wind Power Potential in Western Sahara

Currently, many rural areas in Western Sahara lack access to reliable electricity, which hinders the provision of essential services such as healthcare and education. The ...

SpectraSensors celebrates its anniversary , Endress+Hauser

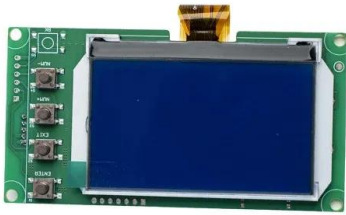
SpectraSensors is celebrating its 20th anniversary. SpectraSensors was formed in 2001 as a technology spin-off of the renowned NASA-Caltech Jet Propulsion Laboratory and acquired by Endress+Hauser in 2012.



Spitfire Ace CEP6 Regenerative Amplifier

To verify and analyze the output power of your Spitfire Ace CEP6 laser, we recommend the Ophir L50(150)A-PF-35 (7Z02737) thermal power sensor and Centauri laser power meter.

Additional information on this laser measurement equipment can be found on the ophiropt website. Other Ophir sensors and meters may also be suitable for the Spitfire Ace CEP6, depending on ...



Specifications

Specifications Imaging System. Laser Lifetime: 40,000 hours typical. 700 Channel Laser Source: Solid-state diode laser at 685 nm. 800 Channel Laser Source: Solid-state diode laser at 785 nm. Detectors: Silicon avalanche photodiodes. Scanning Speed: 5-40 cm/s. Resolution: 21-337 µm. Focus: Adjustable to be aligned to the top surface of the scan bed up to 4 mm above the scan ...



Energy

Unleash the Power of Data: Visualizing Western Sahara's Energy Landscape. Shedding Light on Progress, Empowering Sustainable Solutions. Illuminate Possibilities, Empower Energy ...



Catalina 340c

The Catalina 340c produces 14 gallons (53 liters) of water per hour, making it the perfect watermaker for the midsize yacht with two to four people onboard. The Catalina uses the Spectra Magdrive feed water pump, making the system extremely quiet, energy-efficient, and reliable. This system comes standard with the

Spectra Connect controller.



Contact Us

For catalog requests, pricing, or partnerships, please visit:
<https://bialydom.kolobrzeg.pl>