

European Solar Energy Storage

Solar panel power per square meter Latvia



Overview

In our climate, one square meter of surface receives an average of 1200 kWh per year from the sun. The duration of direct sunlight in Latvia exceeds 1800 hours. The new type of solar panels produces energy with the so-called scattered radiation, which exists around us for 4000 hours.

In our climate, one square meter of surface receives an average of 1200 kWh per year from the sun. The duration of direct sunlight in Latvia exceeds 1800 hours. The new type of solar panels produces energy with the so-called scattered radiation, which exists around us for 4000 hours.

The Global Solar Atlas provides a summary of solar power potential and solar resources globally. It is provided by the World Bank Group as a free service to governments, developers and the general public, and allows users to quickly obtain data and carry out a simple electricity output calculation for any location covered by the solar resource .

Explore the solar photovoltaic (PV) potential across 8 locations in Latvia, from Valmiera to Daugavpils. We have utilized empirical solar and meteorological data obtained from NASA's POWER API to determine solar PV potential and identify the optimal panel tilt angles for these locations.

Solar panel watts per square meter (W/m) measures the power output of a solar panel based on its size. Compare solar panels to see which generates most electricity per square meter. A higher W/m value means a solar panel produces more power from a given area. This can help you determine how many solar panels you need for your energy needs. Why .

Latvia's Solar Rooftop Country Profile. April 2024. Red = 0-1 points. Orange = 2-3 points. Green = 4-5 points. This country profile highlights the good and the bad policies. and practices of solar rooftop PV development within Latvia. It examines and scores six key areas: governance, incentives & support schemes, permitting procedures, energy .

Solar panel power per square meter Latvia



Solar could be crowned 'king' of Latvia's energy market

According to IRENA, Latvia only recorded 54 MW of installed PV capacity at the end of 2023, which is a sliver of Estonia's solar gains (535 MW) and Lithuania's (568 MW).

How to install solar panels in Portugal

Whenever there is a need to use more cable like UTP cable for communications/internet access or cable for installation, there is usually an upcharge per meter; What guarantees are usually provided for a solar panel project? Solar panels (12 years against manufacturing defects, 25 years with production >86%); Inverters - 5 years;

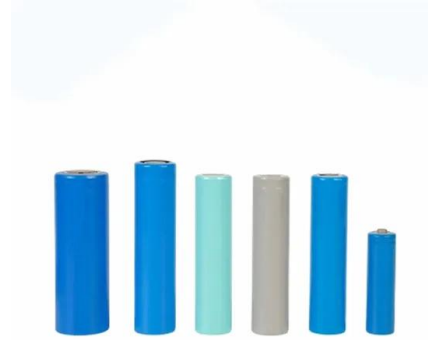


Standard Solar Panel Sizes And Wattages (100W-500W Dimensions)

60-cell solar panels size. The dimensions of 60-cell solar panels are as follows: 66 inches long, and 39 inches wide. That's basically a 66x39 solar panel. But what is the wattage? That is unfortunately not listed at all. 72-cell solar panel size. The dimensions of 72-cell solar panels are as follows: 77 inches long, and 39 inches wide.

Solar panels are rated at 200 Watts per square meter. An acre is

3 ???· Solar panels are rated at 200 Watts per square meter. An acre is approximately 4000 m². How many acres of these solar panels are needed to equal the power o



How Many Solar Panels Needed For 1 MW POWER (Updated)

Average Power Output per Solar Panel. The average power output of a solar panel is typically measured in watts (W). It varies based on the panel's efficiency and the solar irradiance it receives. For example, a standard solar panel with an efficiency of 20% and an irradiance of 1000 W/m² can produce approximately 200 W of power.

Solar Irradiance

Solar Irradiance is a measure of how much solar power you are getting at your location. The irradiance calculator will then show monthly figures showing the average kWh per square meter per day for energy at your location. You can multiply this irradiance figure by the wattage of your photovoltaic panels to give you an average daily amount



How Much Solar Power Can My Roof Generate?

So with a north/south roof, that gives you 850 square feet. 400-watt solar panels that are 20 square feet in size: This is the most frequently



quoted panel power output on EnergySage. 1.3 production ratio: This is the U.S. median production ratio, which is the estimated energy output of a solar panel system relative to its actual size in watts (W).

Standard Solar Panel Sizes And Wattages (100W ...

60-cell solar panels size. The dimensions of 60-cell solar panels are as follows: 66 inches long, and 39 inches wide. That's basically a 66x39 solar panel. But what is the wattage? That is unfortunately not listed at all. 72-cell solar panel ...



How Much Power (Watts) does a Solar Panel Produce?

Solar panel output per square meter. The most common domestic solar panel system is 4 kW. And it has 16 panels, each of which is about 1.6 square meters (m²) in size. They are rated to generate approximately 265 watts (W) of power (in ideal conditions). To calculate the output per square meter, you can use the following formula:

Solar Rooftop Calculator: How Many Solar Panels Can Fit On ...

35 Of 400 Watt Solar Panels: 1200 Square Feet Roof: 15.525 kW Solar System: 155 Of 100 Watt Solar Panels: 51 Of 300 Watt Solar Panels: 38 Of 400 Watt Solar Panels: 1300 Square Feet Roof:

16.819 kW Solar System: 168 Of 100 Watt Solar Panels: 56 Of 300 Watt Solar Panels: 42 Of 400 Watt Solar Panels: 1400 Square Feet Roof: 18.113 kW Solar System

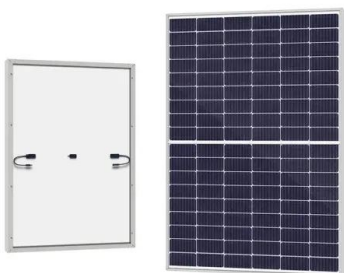


How Many Solar Panels Can Fit on One Acre of Land?

An acre has about 4,050 square meters. So, it fits around 4,050 solar panels. With this setup, an acre can get about 12,000 kilowatt-hours of power daily. Number of Solar Panels Required. The needed number of solar ...

How to Calculate Solar Panel kWh

Example: If the daily output is 1.44 kWh, the monthly output would be $1.44 \times 30 = 43.2$ kWh per month. 5. Output Per Square Meter of Solar Panels. Calculating the output per square meter can be useful for comparing ...



Average Solar Production in Arizona USA

The average solar panel surface area is estimated to be 1.5 square meters. The efficiency of converting solar radiation into energy is estimated to be 15%. Month: Solar radiation per day: Solar radiation per month: Solar energy per month 1 panel: Solar energy per month 20 panels :

The state of solar power in Latvia - the sun isn't ...

Even in Latvia, where sunshine is not as prevalent, solar panels are a sound investment, able to pay for themselves in savings over a few years. However, the Baltic States are far behind the EU average in terms of use of ...



[Solar power in space? : r/nasa](#)

Close to the Sun, by Mercury, every square meter of panel sees a whopping 8500 W. Divide these numbers by seven to get roughly how much a typical panel would put out, with efficiency factored in. Reply reply

How much does a solar panel actually produce? , Greenwood

Understanding production over a solar panels lifetime. Commercial. We have 5 kW (5000 watt) solar array. Its peak power output is 5000 watts but due to various factors this peak is rarely reached. This array, installed in Melbourne, Victoria, Australia, will produce on average, 18 kWh/day of energy, more in summer less in winter so



Solar Panel Watts Per Square Meter Explained

What is Solar Panel Watts per Square Meter? Solar panel watts per square meter (W/m) measures the power output of a solar panel

based on its size. Compare solar panels to see which generates most electricity per square meter. A ...



How much is the average actual power can a solar panel rating ...

However, even on a cloudy day, a solar panel will still generate some electricity. Solar panels are typically rated for their maximum power output under standard test conditions (STC). STC conditions include a solar irradiance of 1000 watts per square meter, a cell temperature of 25 degrees Celsius, and an air mass of 1.5.



How Many Solar Panels Can Fit on One Acre of Land?

An acre has about 4,050 square meters. So, it fits around 4,050 solar panels. With this setup, an acre can get about 12,000 kilowatt-hours of power daily. Number of Solar Panels Required. The needed number of solar panels per acre changes with different factors, like panel efficiency. For example, if solar panels are 20% efficient, they can

Brattorkaia Powerhouse , Solar Panels , SunPower Global

Find out how SunPower Solar Panels make it an energy-positive building. Brattorkaia Powerhouse

is an 18,580-square-metre office building. Find out how SunPower Solar Panels make it an energy-positive building. more than twice as much electricity as it consumes daily in order to fulfill its role as a local solar plant, power per square meter



How Many Solar Panels Do I Need To Power a House in 2024?

A peak sun hour is when the intensity of sunlight (known as solar irradiance) averages 1,000 watts per square meter or 1 kW/m². In the US, the average peak sun hours range from over 5.75 hours per day in the Southwest to less than 4 hours per day in the northernmost parts of the country. If we round up, it takes 17 solar panels to power

How to calculate the surface area required by solar panels

Potential Challenges and Solutions in Solar Panel Sizing Step 13: Address Challenges. Limited Roof Space: If roof space is limited, consider high-efficiency panels that produce more power per square meter. Complex Roofs: For complex roof designs, consider ground-mounted systems or multiple small arrays on different roof sections.



[Solar Power Density Calculator](#)

Solar Power Density (W/m²) is the power per unit area in watts per square meter. Solar Energy (W) is the total energy received from the sun in watts. Solar Panel Area (m²) is the area covered

by solar panels in square meters. How to Use the Solar Power Density Calculator? Using the Solar Power Density Calculator is a user-friendly process:



Average Solar Energy Per Year, Month and Day

Solar panel output per month - assuming a 15% efficiency and a single panel size of 1.6 m², this is the energy produced per square meter from a solar panel over a month. 20 solar panel output per month - assuming a 15% efficiency and a single panel size of 1.6 m², this is the energy produced from 20 solar panels over a month.



How Much Do Industrial Solar Panels Cost?

The "all-in" cost of solar power per watt for an industrial solar system is around \$1.75. The typical price of an industrial solar system depends on how many kilowatts you require to meet your energy needs. So, at 15 ...

[Solar Panel Calculator](#)

To find the solar panel output, use the following solar power formula: output = solar panel kilowatts × environmental factor × solar hours per day . The output will be given in kWh, and, in practice, it will depend on how sunny it is since the number of solar hours per day is just an average.



How Much Do Solar Panels Cost? , Solar Price Guide

Solar panel installation costs a national average of \$16,500 for a 6kW solar panel system for a 1,500 square ft. home. The price per watt for solar panels can range from \$2.50 to \$3.50, and largely depends on the home's geographical area. Residential solar panels are usually sized at 3kW to 8kW and can cost anywhere from \$9,255 and \$28,000 in total installation costs.



Solar panels are rated at 200 Watts per square meter. An acre is

Solar panels are rated at 200 Watts per square meter. An acre is approximately 4000 m². How many acres of these solar panels are needed to equal the power o



Solar panels

In our climate, one square meter of surface receives an average of 1200 kWh per year from the sun. The duration of direct sunlight in Latvia exceeds 1800 hours. The new type of solar panels produces energy with the so-called scattered radiation, which exists around us for 4000 hours.



Contact Us

For catalog requests, pricing, or partnerships, please visit:
<https://bialydom.kolobrzeg.pl>