

European Solar Energy Storage

Rent height of energy storage building



Overview

You have four options for siting ESS in a residential setting: an enclosed utility closet, basement, storage or utility space within a dwelling unit with finished or noncombustible walls or.

SEAC's Storage Fire Detection working group strives to clarify the fire detection requirements in the International Codes (I-Codes). The 2021 IRC calls for the installation of heat detectors that are interconnected to smoke alarms. The problem is detectors and.

The Storage Fire Detection working group develops recommendations for how AHJs and installers can handle ESS in residential settings in spite.

The IFC requires bollards or curb stops for ESS that are subject to vehicular impact damage. See the image below for garage areas that are not subject to damage and don't require bollards or.

Find out about options for residential energy storage system siting, size limits, fire detection options, and vehicle impact protections.

Find out about options for residential energy storage system siting, size limits, fire detection options, and vehicle impact protections.

A Battery Energy Storage System (BESS) is a sophisticated technology that plays a crucial role in optimizing the utilization of renewable energy sources. It stores excess electricity generated from renewable sources like solar and wind power for later use when demand is high, or supply is low.

Key building specifications, including size, condition, and design, can significantly affect rental prices for energy storage facilities. Larger buildings naturally include higher asking rents, attributed to their capacity to support extensive operations.

Specifically, we're focused on spacing requirements and limitations for energy storage systems (ESS). NFPA 855 sets the rules in residential settings for each energy storage unit—how many kWh you can have per unit and the spacing requirements between those units.

This guide is intended for anyone investigating the addition of energy storage to a single or multiple commercial buildings. This could include building energy managers, facility managers, and property managers in a variety of sectors. Who should consider adding energy storage to a commercial building?

This guide is intended for anyone investigating the addition of energy storage to a single or multiple commercial buildings. This could include building energy managers, facility managers, and property managers in a variety of sectors.

Are energy storage systems safe for commercial buildings?

For all of the technologies listed, as long as appropriate high voltage safety procedures are followed, energy storage systems can be a safe source of power in commercial buildings. For more information on specific technologies, please see the DOE/EPRI Electricity Storage Handbook available at:.

Is energy storage a viable option?

Assuming the initial analysis shows that energy storage is an economically viable option, the final decision to procure an ESS needs to be taken in the broader perspective of the business as a whole. This can include looking at issues of space, noise, and timing for system installation.

How do utilities encourage energy storage?

Utilities often offer incentives to encourage the adoption of energy storage systems to improve grid reliability and balance supply and demand. These incentives may include demand response programs, time-of-use rate structures, or capacity market participation.

What are the different types of energy storage?

Energy storage comes in a variety of forms, including mechanical (e.g., pumped hydro), thermal (e.g., ice/water), and electrochemical (e.g., batteries). Recent advances in energy storage, particularly in batteries, have overcome previous size and economic barriers preventing wide-scale deployment in commercial buildings.

Who should oversee energy storage projects?

A qualified professional engineer or firm should always be contracted to oversee any energy storage project. This report was prepared as an account

of work sponsored by an agency of the United States Government.

Rent height of energy storage building



On-Site Energy Storage Decision Guide

This guide is intended for anyone investigating the addition of energy storage to a single or multiple commercial buildings. This could include building energy managers, facility managers, and property managers in a variety of sectors.

How much is the rent for the energy storage building?

Key building specifications, including size, condition, and design, can significantly affect rental prices for energy storage facilities. Larger buildings naturally include higher asking rents, attributed to their capacity to support extensive operations.



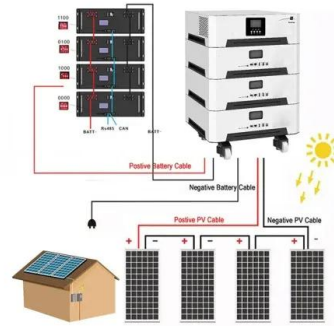
How many meters above ground is the energy storage building?

The energy storage building is typically situated at an elevation of 15 to 25 meters above ground. This height facilitates certain operational advantages, including reduced risk of flooding, enhanced air circulation, and improved accessibility for maintenance.



Battery Storage Land Lease Requirements & Rates 2024

A Battery Energy Storage System (BESS) is a sophisticated technology that plays a crucial role in optimizing the utilization of renewable energy sources. It stores excess electricity generated from renewable sources ...



Leasing Your Land For a Utility Energy Storage System , YSG Solar

You can be sure of a peaceful co-existence with a utility scale energy storage project. If you're interested in leasing your land for solar, utility-scale or otherwise, YSG Solar can explain the process and get things set up for you. Just reach out to us today at 212.389.9215 to discuss your options. By Shane Croghan Sources:

On-Site Energy Storage Decision Guide , Better Buildings Initiative

This guide is intended for anyone investigating the addition of energy storage to a single or multiple commercial buildings.



How much is the rental price of energy storage power station?

Typical rental prices for energy storage power stations fluctuate based on various factors. While large-scale facilities may command rates between \$20,000 to \$200,000 per month, smaller installations can cost considerably less.



Code Corner: NFPA 855 ESS Unit Spacing Limitations

Specifically, we're focused on spacing requirements and limitations for energy storage systems (ESS). NFPA 855 sets the rules in residential settings for each energy storage unit--how many kWh you can have per unit and the spacing requirements between those units.



Leasing Your Land For a Utility Energy Storage ...

You can be sure of a peaceful co-existence with a utility scale energy storage project. If you're interested in leasing your land for solar, utility-scale or otherwise, YSG Solar can explain the process and get things set up ...

New Residential Energy Storage Code Requirements

Find out about options for residential energy storage system siting, size limits, fire detection options, and vehicle impact protections.





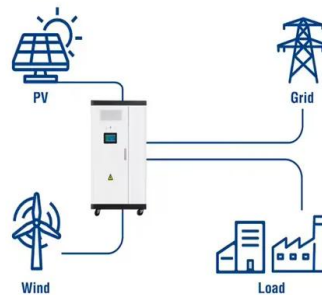
Battery Storage Land Lease Requirements & Rates 2024

A Battery Energy Storage System (BESS) is a sophisticated technology that plays a crucial role in optimizing the utilization of renewable energy sources. It stores excess electricity generated from renewable sources like solar and wind power for later use when demand is high, or supply is low.

Thermal Energy Storage , Buildings , NREL

To accomplish the low-carbon energy goal in the building sector, TES offers several benefits by reducing energy consumption and increasing load flexibility, thus promoting the use of renewable energy sources.

Utility-Scale ESS solutions



Contact Us

For catalog requests, pricing, or partnerships, please visit:
<https://bialydom.kolobrzeg.pl>