

## European Solar Energy Storage

# Pumped storage principle and working process



## Overview

---

Pumped storage plants can operate with seawater, although there are additional challenges compared to using fresh water, such as saltwater corrosion and barnacle growth. Inaugurated in 1966, the 240 MW in France can partially work as a pumped-storage station. When high tides occur at off-peak hours, the turbines can be used to pump more seawater into the reservoir than the high tide would have naturally brought in. It is the only large.

The two reservoirs, an upper and a lower, together form a pumped-storage power system. Pumped-storage power plants are structured around two bodies of water, an upper and a lower reservoir 1 (see the diagram below). At times of very high electricity consumption on the grid, the water from the upper.

The two reservoirs, an upper and a lower, together form a pumped-storage power system. Pumped-storage power plants are structured around two bodies of water, an upper and a lower reservoir 1 (see the diagram below). At times of very high electricity consumption on the grid, the water from the upper.

Pumped storage hydropower (PSH) is one of the most-common and well-established types of energy storage technologies and currently accounts for 96% of all utility-scale energy storage capacity in the United States. PSH facilities store and generate electricity by moving water between two reservoirs.

These are a special type of power plant which works as ordinary hydropower plants for part of the time and when such plants are not producing power, they can be used as pumping stations which pump water from tail race to the head race. During this time, these plants utilize power available from the.

Pumped-storage hydroelectricity (PSH), or pumped hydroelectric energy storage (PHES), is a type of hydroelectric energy storage used by electric power systems for load balancing. A PSH system stores energy in the form of gravitational potential energy of water, pumped from a lower elevation.

Pumped storage plants are a combination of energy storage and power plant.

They utilise the elevation difference between an upper and a lower storage basin. Pumps driven by electric motor- generators move water from the lower to the upper basin, thereby storing potential energy. For electricity.

A pumped-storage hydroelectric plant works by storing energy in the form of water. It has two reservoirs at different heights. During times of low electricity demand, water is pumped from the lower reservoir to the upper one using extra power. During high demand, this water is released back down to. How does a pumped hydro energy storage system work?

Pumped-Hydro Energy Storage Energy stored in the water of the upper reservoir is released as water flows to the lower reservoir Potential energy converted to kinetic energy Kinetic energy of falling water turns a turbine Turbine turns a generator Generator converts mechanical energy to electrical energy K. Webb ESE 471 7 History of PHES.

How do pumped storage power plants work?

Pumped-storage power plants store electricity using water from dams. The new model for using the plants in combination with renewable energy has led to a revival of the technology. In 2000, there were around 30 pumped storage power plants with a capacity of more than 1,000 megawatts worldwide.

What is pumped-storage hydroelectricity?

Pumped-storage hydroelectricity (PSH), or pumped hydroelectric energy storage (PHES), is a type of hydroelectric energy storage used by electric power systems for load balancing. A PSH system stores energy in the form of gravitational potential energy of water, pumped from a lower elevation reservoir to a higher elevation.

What is pumped-storage hydroelectricity (PSH)?

A diagram of the TVA pumped storage facility at Raccoon Mountain Pumped-Storage Plant in Tennessee, United States Pumped-storage hydroelectricity (PSH), or pumped hydroelectric energy storage (PHES), is a type of hydroelectric energy storage used by electric power systems for load balancing.

What is pumped-hydro energy storage?

Pumped-Hydro Energy Storage Potential energy storage in elevated mass is the basis for pumped-hydro energy storage (PHES) Energy used to pump

water from a lower reservoir to an upper reservoir Electrical energy input to motors converted to rotational mechanical energy Pumps transfer energy to the water as kinetic , then potential energy.

What is pumped Energy Storage?

Pumped storage is by far the largest-capacity form of grid energy storage available, and, as of 2020, accounts for around 95% of all active storage installations worldwide, with a total installed throughput capacity of over 181 GW and as of 2020 a total installed storage capacity of over 1.6 TWh.

## Pumped storage principle and working process

---



Standard 20ft containers



Standard 40ft containers

### SECTION 3: PUMPED-HYDRO ENERGY STORAGE

PHES Applications Pumped hydro plants can supply large amounts of both power and energy Can quickly respond to large load variations Uses for PHES: Peak shaving/load leveling Help ...

### How They Work: Pumped-Storage Power Plants

Pumped-storage power plants are reversible hydroelectric facilities where water is pumped uphill into a reservoir. The force of the water flowing back down the hill is then harnessed to produce electricity in the ...



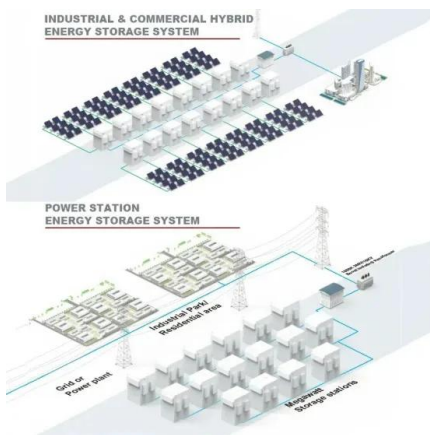
### Hydroelectric Power: How it Works , U.S. Geological Survey

So just how do we get electricity from water? Actually, hydroelectric and coal-fired power plants produce electricity in a similar way. In both cases a power source is used to turn ...

### What is pumped storage hydro?

The long-duration storage technology has been used for more than half a century to balance demand on Great Britain's electricity grid and

accounts for more than 99% ...



## What is Pumped Storage Hydro Power (PSH)?

About Pumped Storage Hydropower (PSH): PSH is a type of hydroelectric energy storage. PSH is a fundamentally simple system that consists of two water reservoirs at different ...

## Pumped hydropower energy storage

This chapter presents an overview of the fundamentals of pumped hydropower storage (PHS) systems, a history of the development of the technology, various possible ...



## Pumped storage

Pumped storage is the process of storing energy by using two vertically separated water reservoirs. [1] Water is pumped from the lower reservoir up into a holding reservoir. [2] Pumped storage facilities store excess energy ...



## Pumped energy storage system technology and its AC-DC ...

The basic operation principle of a pumped-storage plant is that it converts electrical energy from a grid-interconnected system to hydraulic potential energy (so-called ...

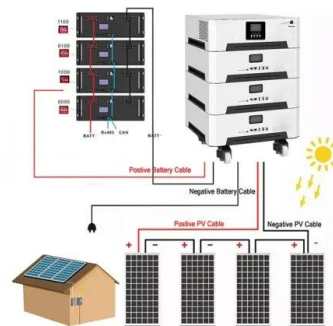


## pumped hydro energy storage system , PPTX

The document discusses pumped hydro energy storage systems. Pumped hydro stores energy by pumping water from a lower reservoir to an upper reservoir, then generating electricity by releasing the water through ...

## What is a pumped-storage hydroelectric power plant?

A pumped-storage hydroelectric power plant--also known as a reversible plant--is one of the most efficient large-scale energy storage solutions. It converts hydraulic ...



## Technology: Pumped Hydroelectric Energy Storage

Pumped storage plants are technically suited to all existing energy markets. They balance power generation and consumption in the electricity system, provide system services and reserve ...



## How Pumped Storage Hydropower Works

How Pumped Storage Hydropower Works How Does Pumped Storage Hydropower Work? Pumped storage hydropower (PSH) is one of the most-common and well-established types of energy storage technologies and ...



## **Components and structure of pump hydro storage system.**

Download scientific diagram , Components and structure of pump hydro storage system. from publication: Contribution of pumped hydro energy storage for more RES utilization on ...

## **How does pumped hydro energy storage work**

Pumped hydro energy storage (PHES) works by moving water between two reservoirs located at different elevations to store and generate electricity. The basic principle involves converting electrical ...





## Pumped storage hydropower plants

Hydroelectric power plants, which convert hydraulic energy into electricity, are a major source of renewable energy. There are various types of hydropower plants: run-of-river, reservoir, ...

### **Explain the working of a pumped-storage hydroelectric plant.**

A pumped-storage hydroelectric plant works by moving water between two reservoirs to store energy during low demand and generate electricity during high demand.

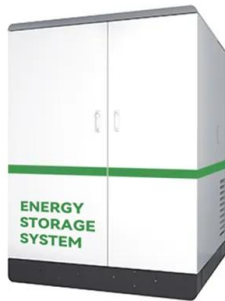


### **Pumped storage principle and working process**

The working principles, development process and technical features of pumped storage, compressed air energy storage, flywheel energy storage, electromagnetic energy storage and ...

### **How does pumped-storage hydroelectricity work**

Pumped-storage hydroelectricity (PSH) is a widely used method for storing energy, particularly in supporting grid stability and balancing electricity supply. Here's how it works:  
 Basic Principle PSH ...



## Components and structure of pump hydro storage ...

Download scientific diagram , Components and structure of pump hydro storage system. from publication: Contribution of pumped hydro energy storage for more RES utilization on autonomous power

## Pumped Thermal Electricity Storage: A technology overview

Pumped Thermal Electricity Storage or Pumped Heat Energy Storage can be categorised according to their thermodynamic cycle and working fluid: closed Brayton cycle or ...



## Schematic diagram of the principle of pumped storage

The present research situation of energy storage is outlined. The working principles, development process and technical features of pumped storage, compressed air energy storage, flywheel ...

## How Pumped Hydro Storage Works: An Overview

Discover how pumped hydro storage works and how it can store large amounts of energy, providing a reliable and cost-effective solution for energy storage.

50KW modular power converter



**Flexible Configuration**

- Modular Design, Expanding as Required
- SlimHeight, Wall-Mounted
- Installed in Racks for Expansion



**Powerful Function**

- Support PV+ESS
- Grid Support, Equipped with DTC Technology
- On-Grid and Off-Grid Operation



**Reliable Protection**

- Outdoor IP65 Design
- Sufficient Protection Functions Equipped



## How does a pumped storage hydroelectric plant work?

How Does It Work? The operation of a pumped storage plant relies on two bodies of water located at different elevations. During times of high demand, water descends from the upper reservoir ...

## Pumped energy storage system technology and its ...

The basic operation principle of a pumped-storage plant is that it converts electrical energy from a grid-interconnected system to hydraulic potential energy (so-called 'charging') by pumping the water ...



## Construction of pumped storage power stations among cascade ...

As the most mature and cost-effective energy storage technology available today, pumped storage power stations utilize excess WPP to pump water from a lower reservoir (LR) ...



## Pumped Storage Plant - Principle of Operation

Water is pumped up to the top reservoir at night when demand for power across the country is low. It is an igneous way of conserving the limited water resources on the one hand and balancing the ...



## DOE ESHB Chapter 9: Pumped Hydroelectric Storage

Abstract Pumped hydroelectric storage (PHS) is the most widely used electrical energy storage technology in the world today. It can offer a wide range of services to the modern-day power ...

## Pumped hydro energy storage system: A technological review

The pumped hydro energy storage (PHES) is a well-established and commercially-acceptable technology for utility-scale electricity storage and has been used ...





## Pumped-Storage Hydroelectricity

Pumped hydroelectricity storage (PHS) is the oldest kind of large-scale energy storage and works on a very simple principle--two reservoirs at different altitudes are required and when the ...

### **How does a pumped storage power plant work?**

Pumped storage power plants are primarily characterized by their dual-functionality, serving both as an energy storage facility and a power generation source. These innovative systems utilize two water ...



### **Principle and characteristics of pumped storage**

The principle behind the operation of pumped storage power plants is both simple and ingenious. Their special feature: They are an energy store and a hydroelectric power plant in one. If there ...

### **Construction and working principle of pumped ...**

Construction and working principle of pumped storage plants Figure: Pumped storage plant. Pumped storage plants are employed at the places where the quantity of water available for power generation is inadequate. Here the ...

## FLEXIBLE SETTING OF MULTIPLE WORKING MODES



## Contact Us

---

For catalog requests, pricing, or partnerships, please visit:  
<https://bialydom.kolobrzeg.pl>