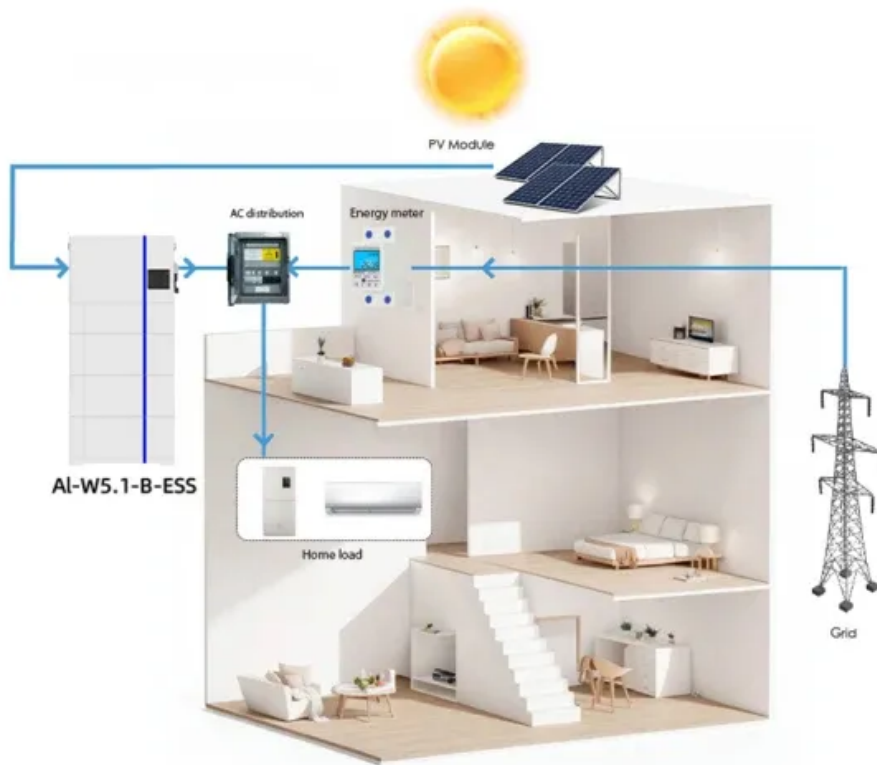


## European Solar Energy Storage

# Pixii powershaper Taiwan



**SMART GRID & HOME**



## Overview

---

### What is Pixii Powershaper?

The Pixii PowerShaper family is a complete energy storage solution for up to 50kW power conversion and 50kWh energy storage capacity with LFP batteries and 40kW and 120kW with NMC batteries. How does it work?

.

### What is Pixii Powershaper XD?

The Pixii PowerShaper XD, is a fully integrated IP55 modular energy storage system designed for easy deployment, high energy density, low noise stand alone or grid connected power. Utilising Pixii Energy Architect (EMS).

### What is the warranty on the Pixii Powershaper?

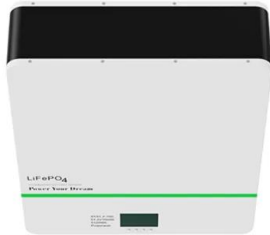
Outdoor use, IP55, ventilated cabinet. Warranty extension (paid) up to 10 years. Prices on request. The Pixii Powershaper hybrid storage solution is unique on the market and allows a wide range of applications (optimization of self-consumption, anti-black-out, micro-grid, off-grid).

### Which batteries are compatible with pixiibox inverters?

Pixiibox inverters not only allow wide compatibility with a range of 48V CANBUS lithium batteries (LG CHEM, Polarium), but also the support of 48V batteries without BMS (LTO Zenaji batteries, etc.) thus allowing great flexibility in the choice of possible configurations.

## Pixii powershaper Taiwan

---



### PowerShaper XD & Energy Architect EMS for the Australian outback

Pixii introduces the PowerShaper XD and Energy Architect EMS - innovative systems designed to tackle the unique challenges faced by energy integrators, installers, and solar companies in Australia. Diesel generators have long been a staple for backup power in the outback, but they come with drawbacks - noise, emissions, and ongoing fuel costs.

## Pixii, PeakShaper and Tensio

At work in this case: Pixii PowerBase 580 kW, 600kWh system with NMC . Project contacts Pixii Oslo E-mail: [Show Email](#) Visiting address: Sommerrogata 13-15, 0255 Oslo. Project manager Pixii Morten Schøyen CPO Tel. +47 915 17 452 E-mail: [Show Email](#)



## Pixii Academy

The Pixii Academy is an online support portal designed to help partners and installers educate themselves on the latest in Pixii's modular BESS technologies. This specialized online course on the physical installation of PowerShaper XL systems is designed for installers, aggregators, and other business partners. The program provides

## The BESS that pays for itself!

Cost-saving battery services. Arbitrage: Maximizes the use of energy purchased at low prices from the grid, enhancing cost efficiency by optimizing consumption during high-cost periods. Peak shaving: Lowers energy costs by active and reactive reduction of peak demand charges. Power boost: Grid upgrades can be expensive and time consuming. Avoid the ...

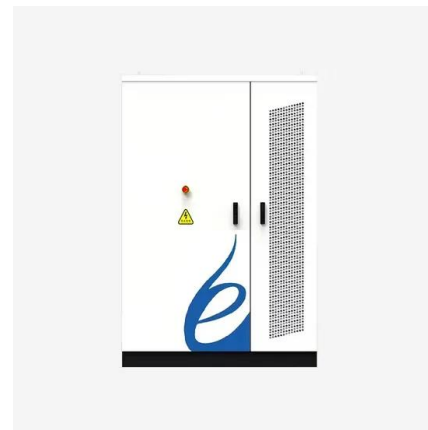


## Pixii Power Shaper ID

Pixii Power Shaper ID Flexible grid tied indoor energy storage system The PowerShaper ID from Pixii, is an IP20 complete modular energy storage system. It is fully ...

## **PowerShaper**

The PowerBase is a robust energy storage system built on a steel frame with the footprint of a standard ISO 20-foot container. Pre-wired and pre-configured, it minimizes installation costs and delivery time, accommodating up to 12 Pixii PowerShaper cabinets with a ...



## **PowerBase XL preconfigured skid solution for Hünfeld**

Pixii PowerBase XL - Preconfigured skid, 540kW up to 1,8MWh A practical solution for energy needs. Part of the PowerShaper XL product family, the PowerBase XL offers 530kW power and 1.8MWh storage capacity. It's designed for scalability and easy integration, making it ideal for large-scale energy demands.

## [Products landing page](#)

The Pixii battery energy storage system is modular, easy to scale and quick to deploy. It comes with smart functionality, allowing you to reduce your energy costs, open new revenue streams, and get the most out of your PV installation Pixii PowerShaper XL family. Addressing more energy hungry applications with the PowerShaper XL family.



## **Pixii signs distribution agreement with Rexel**

Pixii is happy to announce that Rexel will distribute Pixii's products in Sweden, a key market for Pixii's smart energy storage solutions. Together with its installation customers, Rexel will target commercial and public property owners and industries with Pixii PowerShaper cabinets as well as the residential market with the newly launched

## **Supercharging progress - TSG partners with Pixii for scalable EV**

The partnership between TSG and Pixii is a testament to how innovative energy solutions can overcome significant challenges, paving the way for a more sustainable future. At work in this case: PowerShaper, 3 x 50kW modular energy storage with an output of 150 kW / 150 kWh, LFP batteries. Project contacts Pixii Oslo E-mail: [Show Email](#)



## [Pixii Home family](#)



PowerShaper - Residential. Pixii Home. Bulding blocks. PixiiBox. Batteries. Related markets. Residential. Store energy from the sun and become more energy independent. How does it work? With cutting-edge technology, the Pixii modular energy storage solution gives you a wide range of functions, allowing you to unleash your growth potential

## Monitoring and control

The brain in the Pixii PowerShaper is a powerful controller - the Pixii Gateway - overseeing all internal functions as well as interoperability with the outside world. Pixii Gateway. Within the Pixii PowerShaper is an advanced controller unit with a variety of connections, ports, inputs and outputs. The Pixii Gateway enables measurement of



## Pixii Power Shaper XL

PowerShaper XL is achieved using the PixiiBox, a bidirectional 3,3kW AC/DC converter module. There is room for up to 18 PixiiBoxes in each cabinet. The system includes the Pixii Gateway ...

## Easy installation and maintenance

The Pixii solution is fully integrated and comes with our user-friendly Pixii gateway web app, allowing for easy installation with minimal on-site work. Our team of engineers have combined their extensive expertise and knowledge of the market to create our revolutionary Pixii battery energy storage system.



## Leading the charge - How Greenbat and Pixii revolutionized ...

The implementation of Pixii's PowerShaper technology has revolutionized Greenbat's ability to provide ancillary services. The system's rapid response time, capable of adjusting power within three seconds, is ideally suited for primary frequency regulation, helping to stabilize the grid and ensure a reliable electricity supply.

## PowerBase XL

The PowerBase XL is a high-capacity energy storage system supporting up to 9 PowerShaper XL cabinets, offering 530kW of power and 1.8MWh of storage. Designed for quick deployment and cost efficiency, it leverages value stacking to combine energy savings with revenue-generating services like peak shaving and fast frequency support.



## Pixii expands into India with our new office in New Delhi

As part of our commitment to support India's renewable energy goals, Pixii has opened a new office in New Delhi. This marks an exciting new chapter in our global journey, as we help drive

the energy transition in one of the world's ...



## Optimizing ROI with dynamic value stacking

Product Manager On-grid Applications at Pixii Henrik is passionate about developing products that meets the market requirements and supporting customers in finding their optimal solutions. With his engineering and power market background he understands the value chains, and makes sure Pixii's product portfolio and partners always meets the



- LiFePO<sub>4</sub>
- Wide temp: -20°C to 55°C
- Easy to expand
- Floor mount&wall mount
- Intelligent BMS
- Cycle Life:≥6000
- Warranty :10 years



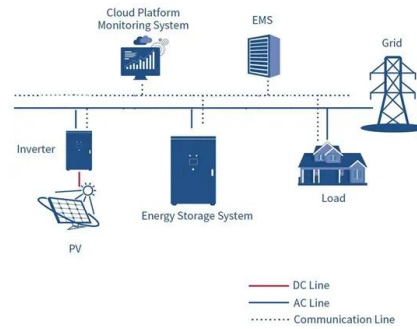
## [Pixii Academy](#)

The Pixii Academy is an online support portal designed to help partners and installers educate themselves on the latest in Pixii's modular BESS technologies. This specialized online course on the physical installation of PowerShaper ...

## ep enhances distributed energy solutions with Pixii partnership in ...

Beyond reducing energy costs, Pixii's solutions enable building owners to generate new revenue streams through EV charging and participating in electricity markets. By reducing the need for

expensive grid upgrades, Pixii's technology addresses grid ...

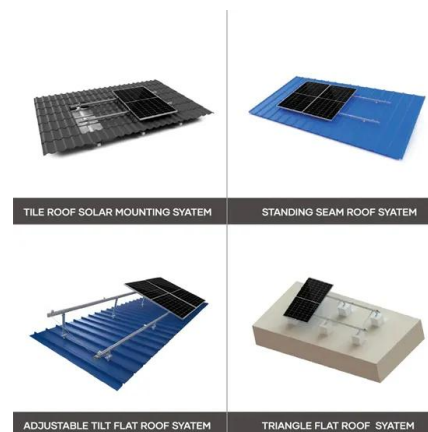


## Batteries

Pixii energy storage can operate with most battery modules designed for 48VDC and parallel operation and our systems are compatible with a wide range of battery brands and technologies. LFP batteries typically for more power oriented applications, with the lowest level of cobalt or nickel, and NMC batteries providing the highest level of energy

## PowerShaper

The Pixii PowerShaper is a modular battery energy storage system that optimizes energy use, helping you avoid costly grid upgrades. It comes with smart functionality like time shift and ...



## Pixii expands its Australian presence with new office in Brisbane

The new Brisbane office is an addition to Pixii's existing presence in Sydney and reflects our commitment to extending the reach across Australia. The strategic decision to expand in Brisbane was motivated by Pixii's increasing



growth in the country and the unique suitability of its distributed BESS solutions for the Australian energy

## Pixii Gateway

The Pixii Gateway is a built-in powerful controller, enabling you to connect with, monitor, and control all components within the system, as well as external sensors and other hardware at your site. PowerShaper Indoor. Monitoring and control. Related markets. Commercial and industrial. Reduce energy cost and unlock new revenue streams to



## Residential

Pixii's compact BESS is fully integrated, enabling you to get the most out of new or existing solar installations, maximizing self-consumption. PowerShaper - Residential. PowerShaper Indoor. PixiiBox. All products. Case studies. CASE: EV charging. Charging ahead - Milence and Pixii's solution for E-truck charging.

## Innovating the future of EV charging, Pixii and Elywhere's

With the help of Pixii and Elywhere, Circle K are leading the way in revolutionizing the electric vehicle charging infrastructure and making charging an effortless experience anywhere. At work in this case: Pixii PowerShaper, 6 x 50kW modular energy storage with an output of 300kW. Project contacts Pixii Oslo E-mail: Show

Email



51.2V 150AH, 7.68KWH

## Pixii and Sparkion integrate technologies to transform EV charging

Merging Pixii's innovative energy storage solutions with Sparkion's advanced energy management goes beyond meeting industry demands; it sets a new standard for seamless, efficient, and environmentally responsible EV charging solutions" Kenneth Bodahl, Chief Executive Officer of Pixii Kenneth Bodahl, Chief Executive Officer of Pixii

### Pixii Power Shaper

PowerShaper is achieved using the PixiiBox, a bidirectional 3,3kW AC/DC converter module. There is room for up to 15 PixiiBoxes in each cabinet. The system includes the Pixii Gateway ...



### Pixii Power Shaper

PowerShaper is achieved using the PixiiBox, a bidirectional 3,3kW AC/DC converter module. There is room for up to 15 PixiiBoxes in each cabinet. The system includes ...



## Charging ahead - Milence and Pixii's solution for E-truck charging

Milence selected Pixii to develop a robust and scalable BESS for the Venlo charging hub. A Pixii PowerBase system was installed with a 520 kW / 1.1 MWh battery energy storage capacity, supported by a total of 13 PowerShaper cabinets- one of which was deployed in addition to the main PowerBase setup.



## Ensuring quality and cybersecurity at Pixii

As a Norwegian company, Pixii takes pride in adhering to the highest standards of quality and

### Commercial and Industrial ESS

Air Cooling / Liquid Cooling

- Budget Friendly Solution
- Renewable Energy Integration
- Modular Design for Flexible Expansion



## Explore how value stacking improve your ROI

At Pixii, we have gained extensive experience implementing value stacking strategies through real-world installations. With numerous systems successfully up and running, we have fine-tuned our approach to maximize the value of every BESS. PowerShaper Indoor. Pixii Home. All products. Our software defined bi-directional converters makes all

security. Our robust approach to product development, manufacturing, and maintenance integrates multi-layered security protocols, well-documented product specifications, component-level traceability, online yield monitoring during production, stringent testing ...



### [Pixii to support Thai power grid](#)

Pixii has signed a memorandum of understanding with the Provincial Electricity Authority (PEA) of Thailand and I2 Enterprise Public Company Limited to collaborate on a project to develop battery energy storage systems to support PEA's power grid.

## Contact Us

---

For catalog requests, pricing, or partnerships, please visit:  
<https://bialydom.kolobrzeg.pl>