

European Solar Energy Storage

Orc system Heard and McDonald Islands



Overview

The United Kingdom formally established its claim to Heard Island in 1910, marked by the raising of the Union Flag and the erection of a beacon by Captain Evensen, master of the Mangoro. Effective government, administration and control of Heard Island and the McDonald Islands was transferred to the Australian government on 26 December 1947 at the commencement of the first

What is the significance of Heard Island & McDonald Islands?

Heard Island and the McDonald Islands, with the Kerguelen Islands, are exposed parts of the Kerguelen Plateau, possibly the largest submarine plateau on earth, and provide geochemical and isotopic insights into the formation of oceanic plateaux, mantle plume development and the separation of Australia, India and Africa from Antarctica.

Why are Heard Island and McDonald Islands isolated?

However, the site's isolation assists in reducing anthropogenic impacts upon the site's values. Heard Island and McDonald Islands are located in the Southern Ocean, approximately 1,700 km from the Antarctic continent and 4,100 km south-west of Perth.

Where are Heard Island and McDonald Islands located?

The islands are a territory (Territory of Heard Island and McDonald Islands) of Australia administered from Hobart by the Australian Antarctic Division of the Australian Department of Climate Change, Energy, the Environment and Water.

Who manages the Heard & McDonald Islands?

The islands are administered under the Heard and McDonald Islands Act of 1953 and the Environment Protection and Management Ordinance of 1987 by the Antarctic Division of the national Department of Tourism, Arts & Environment (formerly the Department of the Arts, Sport, the Environment, Tourism & Territories, DASETT).

Is there a threat to Heard Island and the McDonald Islands?

Ongoing and accelerating climate change poses an increasing risk of fundamental alterations in biodiversity. Geological processes (primarily volcanism and glacial retreat) continue undisturbed. The overall assessment is that there is a low threat to the World Heritage values of Heard Island and the McDonald Islands if visitation remains low.

What is the difference between heard and McDonald Islands?

The geological histories of Heard and the Kerguelen Islands extend over the last 50 Ma while the McDonald Islands are very young, perhaps having formed within the last 100 000 years.

When it was established in 2002, the Heard Island and McDonald Islands (HIMI) Marine Reserve was the largest marine protected area (MPA) in the world, and at 65 000 km²



Heard and McDonald Islands , World Heritage Outlook

Heard Island and McDonald Islands are located in the Southern Ocean, approximately 1,700 km from the Antarctic continent and 4,100 km south-west of Perth. As the only volcanically active ...

Heard & McDonald Islands Postal Codes

Heard & McDonald Islands Postcodes, ZIP Codes, Postal Codes information, The Heard & McDonald Islands is a country primarily located in Antarctica, The capital is Canberra. The numeric is 334 and dial code is +672. The postal system name in the country is Postcode, You can find out the postal code of each region from our website. We provide postal codes for 2 ...



Heard & McDonald Islands, Australia , Smithsonian Ocean

The Heard & McDonald Islands site in Australia was inscribed on the World Heritage List in 1997. As the only volcanically active sub-Antarctic islands, Heard and McDonald provide the ...



Heard Island and McDonald Islands Flag

The barren island of Heard and McDonald were once under the United Kingdom before it became a territory of Australia. The UK union jack flag is considered the only previous flag to have been used on the Heard and McDonald Islands. It was first hoisted on the island in 1910. Later on, in 1947, the island fell into Australian authority, and since



Heard and McDonald Islands

Located in the Southern Ocean, this Australian external territory comprises mainly two volcanic islands, Heard Island and the McDonald Islands, featuring stark volcanic landscapes, glaciers, and the highest mountain in Australian territory, Mawson Peak. Significance.

HEARD ISLAND AND MCDONALD ISLANDS

HEARD ISLAND AND MCDONALD ISLANDS by Ewan Mcivor (with two text-figures) Mcivor, E. 2007 (23:xi): Heard Island and McDonald Islands. Papers and Proceedings of the Royal Society of Tasmania 141(1): 7-10. the comprehensive

and representative system of marine protected areas and to help protect Australia's unique marine & & & &



Heard and McDonald Islands, Australia , SpringerLink

The area is managed by the Australian Government Heard Island and McDonald Islands Marine Reserve and World Heritage site management. The islands are inhabited ...



About: Heard Island and McDonald Islands

The Territory of Heard Island and McDonald Islands (HIMI) is an Australian external territory comprising a volcanic group of mostly barren Antarctic islands, about two-thirds of the way from Madagascar to Antarctica. The group's overall size is 372 km² (144 sq mi) in area and it has 101.9 km (63 mi) of coastline. Discovered in the mid-19th century, the islands lie on the ...



[Heard and McDonald Islands](#)

Heard Island and McDonald Islands are located in the Southern Ocean, approximately 1,700 km from the Antarctic continent and 4,100 km south-west of Perth. As the only volcanically active subantarctic islands they 'open a window into the earth', thus providing the opportunity to observe ongoing geomorphic



[Heard Island and McDonald Islands](#)

Overview Administration and economy History Geography Wildlife See also Further reading External links

The United Kingdom formally established its claim to Heard Island in 1910, marked by the raising of the Union Flag and the erection of a beacon by Captain Evensen, master of the Mangoro. Effective government, administration and control of Heard Island and the McDonald Islands was transferred to the Australian government on 26 December 1947 at the commencement of the first



[Heard Island and McDonald Islands](#)

The Territory of Heard Island and McDonald Islands (HIMI; ISO 3166 region code: HMD, HM, 334;) is an Australian external territory comprising a volcanic group of mostly barren Antarctic islands, about two-thirds of the way from Madagascar to Antarctica. The group's overall land area is 372 km² (144

Heard Island and McDonald Islands - Travel guide at

Wikivoyage

Heard Island and McDonald Islands are uninhabited, barren, Subantarctic islands in the Southern Ocean, far due south of India and roughly 400 km southeast of Kerguelen of the French Southern and Antarctic Lands. The islands are administered by Australia and listed as a UNESCO World Heritage site. Although it's administered by Australia, the islands are approximately 4,000 ...



[Heard Island and McDonald Islands](#)

Heard Island and McDonald Islands in the Southern Ocean A map of Heard Island and McDonald Islands. Heard Island, by far the largest of the group, is a 368-square-kilometre (142 sq mi) mountainous island covered by 41 glaciers [21] (the island is 80% covered with ice [1]) and dominated by the Big Ben massif has a maximum elevation of 2,745 metres (9,006 ft) at ...

Heard Island and McDonald Islands facts for kids

The Territory of Heard Island and McDonald Islands (HIMI) is an Australian external territory comprising a volcanic group of mostly barren Antarctic islands, about two-thirds of the way from Madagascar to Antarctica. The group's overall size is 372 km² (144 sq mi) in area and it has 101.9 km (63 mi) of coastline. Discovered in the mid-19th century, the islands lie on ...



Heard Island and McDonald Islands Country Information

Mawson Peak on Heard Island is the highest



Australian mountain (at 2,745 meters, it is taller than Mt. Kosciuszko in Australia proper), and one of only two active volcanoes located in Australian territory, the other being McDonald Island; in 1992, McDonald Island broke its dormancy and began erupting; it has erupted several times since, most

Heard and McDonald Islands Hotels on the River

Find the best cities for Hotels on the River in Heard and McDonald Islands . Compare room rates, hotel reviews and availability. Most hotels are fully refundable.



Heard and McDonald Islands McDonald Islands

The Heard Island and McDonald Islands group can be described as the wildest place on earth - a smoking volcano under a mantle of snow and glacial ice rising above the

Management Arrangements for the Heard Island

Heard Island and McDonald Islands Fishery Management Plan 2002 v Compilation No. 4
Compilation date: 04/05/2016 fishery means the Heard Island and McDonald Islands Fishery.
fishing year means a period of 12 months beginning on 1 December in any year. Heard Island and McDonald Islands Fishery means



fishing for fish of a



Heard Island and McDonald Islands

The Territory of Heard Island and McDonald Islands [2] [3] (HIMI; [4] ISO 3166 region code: HMD, HM, 334; [5]) is an Australian external territory comprising a volcanic group of mostly barren Antarctic islands, about two-thirds of the way ...

Heard and Mcdonald Islands

HEARD AND MCDONALD ISLANDS AUSTRALIA
 Heard Island and the McDonald Islands are in the Southern Ocean, approximately 4,100 km south-west of Perth and 1,700 km from the ...



???(?????????????)_??

???(Heard Island),??????,??????????????3800??,??
 ???2000??,??????????40??,??????????????1953?,??
 ???????????????????1997????????????????????????????
 ??? ...

Heard Island and McDonald Islands

Heard Island and McDonald Islands. Antarctica.
 Page last updated: November 27, 2024. Photos of Heard Island and McDonald Islands. view 3

photos. Country Flag. View Details Legal system. Diplomatic ...

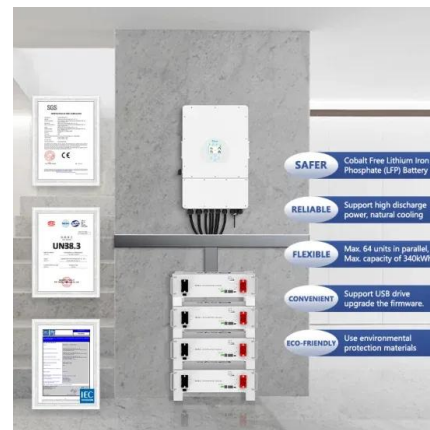


Research expeditions - Heard and McDonald Islands

Heard Island is a major research site along the Antarctic Environmental Gradient (AEG). The AEG spans 30 degrees of latitude and includes a range of macro-climatic zones from cool temperate islands to the frigid and arid Antarctic continent. Conducted simultaneous studies on Heard Island and the Kerguelen Islands during the 2003-04 summer.

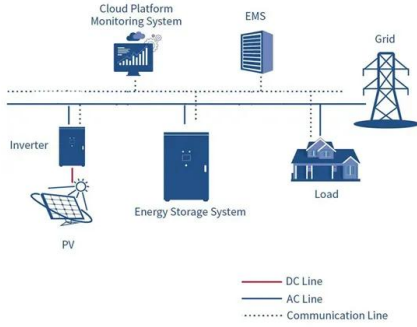
Isole Heard e McDonald

L'isola Heard e le isole McDonald sono isole disabitate che si trovano nell'Oceano Antartico, a circa due terzi di distanza tra il Madagascar e l'Antartide. Esse costituiscono un territorio esterno australiano dal 1947 e contengono i due soli vulcani attivi presenti sul territorio australiano, uno dei quali (Mawson Peak) è anche la montagna australiana più elevata, con 2.745 metri.



??? (????????????) ??

????????(?:Heard Island and McDonald Islands ,?:HIMI),????????,1947????????,1997???? ????? (?????)?HIMI??1600????????



Heard and Mcdonald Islands , Mad Traveller

Heard and McDonald Islands: A Comprehensive Guide for Tourists Table of Contents Introduction Geography and History 2.1 Heard Island 2.2 McDonald Islands Climate and Wildlife Travel Information 4.1 How to Get There 4.2 When to Visit 4.3 What to Pack Things to Do and See Safety and Regulations Tips for Responsible Travel Useful Resources 1. Introduction ...



hm

Mawson Peak on Heard Island is the highest Australian mountain (at 2,745 meters, it is taller than Mt. Kosciuszko in Australia proper), and one of only two active volcanoes located in Australian territory, the other being McDonald Island; in 1992, McDonald Island broke its dormancy and began erupting; it has erupted several times since, most recently in 2005

Download Flag of Heard Island and McDonald Islands vector

Vector images of flag of Heard Island and McDonald Islands available to free download. completely free for commercial and non-commercial use (public domain) based on vector

file from Wikimedia Commons; SVG, PDF (Adobe Acrobat), AI (Adobe Illustrator) or EPS format; we appreciate backlink to <https://flagpedia>



???????????

??????????(?: Heard Island and McDonald Islands,?:HIMI),??????????,1947??????????
????,1997????????????(?????????)? ??????1600?????
???;????????????1000????????????,?????3700?????

Contact Us

For catalog requests, pricing, or partnerships, please visit:
<https://bialydom.kolobrzeg.pl>