

## European Solar Energy Storage

# Nepal redflow x10 battery



## Overview

---

Will Redflow's new X10 battery work at Stanwell's Future Energy & Innovation Hub?

A feasibility study will conduct technical and commercial due diligence for an initial 5 MWh project using Redflow's new X10 battery solution at Stanwell's Future Energy and Innovation Training Hub being built at the coal-fired Stanwell power station site near Rockhampton in central Queensland.

Will Redflow's X10 battery be used in a 400 MWh project?

The two parties intend to then deploy Redflow's X10 battery for use in a 400 MWh large-scale project at a site that has yet to be revealed. Redflow said the X10 is the "natural evolution" of its current zinc-bromine battery systems and designed for larger-scale projects.

What will Redflow do with X10 ZBM batteries?

The ultimate plan is to collaborate on the development and deployment of the X10 ZBM batteries in a large-scale project of up to 400 MWh, which will serve as a potential anchor order for Redflow's planned Queensland factory.

What is Redflow X10?

Redflow said the X10 is the "natural evolution" of its current zinc-bromine battery systems and designed for larger-scale projects. The system utilises the core stack technology that was developed for the company's ZBM3 battery unit but in a new form designed for large-scale deployments.

Is Redflow partnering with Stanwell?

Queensland-based battery company Redflow has signed a memorandum of understanding with publicly owned energy company Stanwell to collaborate on the development and deployment of its next generation zinc bromide flow battery for use in large-scale projects.

## What is Redflow battery technology?

Founded in 2008, Redflow designs flow battery technology that offers a much longer duration, safer and longer lasting alternative to lithium ion. Its batteries use water-based electrolytes, which act as a fire retardant, making them ideal for critical infrastructure like hospitals, power stations and military bases.

## Nepal redflow x10 battery

---



### Redflow partners with Stanwell Corporation on long-duration

...

The MOU sets out Redflow's and Stanwell's intention to collaborate on the development and deployment of Redflow's X10 battery for use in a 400 MWh large-scale project, which will serve as a potential anchor order for Redflow's planned manufacturing facility in ...

### ASX-listed battery company Redflow handed to administrators ...

Brisbane battery company Redflow has been placed in voluntary administration and its shares suspended from trade just weeks after unveiling plans for a 5 MWh project with Queensland's energy generators, Stanwell Corporation. (MOU) with energy generator Stanwell Corporation to deploy of Redflow's X10 battery solution in a large-scale

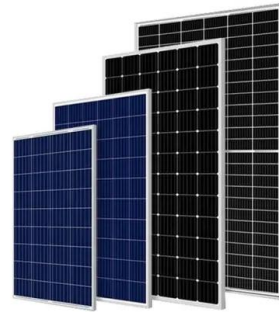


### Redflow enters voluntary administration after failing to secure funds

Redflow, a Brisbane-based zinc-bromine flow battery producer, has entered into voluntary administration after failing to secure capital to scale up its X10 battery to target larger projects. In March, it secured AUD 1.1 million (\$740,000) in funding from the Queensland Critical Minerals and Battery Technology Fund to develop and build a large

## Redflow signs MOU with Stanwell for renewable energy transition

The MOU sets out Redflow's and Stanwell's intention to collaborate on the development and deployment of Redflow's X10 battery for use in a 400MWh large-scale project. Redflow (ASX: RFX) has signed a memorandum of understanding (MOU) with Queensland's largest energy generator, Stanwell Corporation.



## Australian battery manufacturer Redflow enters voluntary ...

Queensland-based zinc-bromine flow battery producer Redflow has entered voluntary administration after it was unable to attract capital to scale up its X10 battery. In March 2024, Redflow was awarded AUD 1.1 million (\$740,000) from the Queensland Critical Minerals and Battery Technology Fund, to develop and build a large scale version of the

## Can Redflow's Home Flow Battery Really Beat Lithium-Ion?

Redflow unveiled its 5-kilowatt, 10-kilowatt-hour ZCell home battery in June. The company says the fully installed cost of the ZCell, including inverter and sales tax, should be between AUD



## Redflow to build 20 MWh redox-flow battery in California



Redflow, an Australian redox-flow battery manufacturer, will build one of the world's largest zinc-based battery energy storage systems in the United States, after signing a multi-million-dollar

## Redflow was the great hope of Australian manufacturing. Its

...

Redflow CEO Tim Harris (left) showing a Redflow battery to Industry and Science Minister Ed Husic (right). (Supplied: Redflow) But, largely out of public view, the company was in trouble.



## Redflow experienced 'tightness of capital for emerging energy tech'

Australian Securities Exchange-listed zinc-bromine flow battery company Redflow appeared to be on the brink of a significant scale-up in the past couple of years. This article requires Premium Subscription Basic Yet efforts to raise funding to develop and manufacture its latest flow battery product, the Redflow X10, from a new manufacturing

## Redflow Liquidation: Australian Battery Developer Faces Financial ...

Discover the story of Redflow's liquidation in Australia, following a significant MOU with

Stanwell Corporation. Get insights into the key points and implications for the industry. Redflow, a prominent developer of battery storage technology in Australia, along with its Australian subsidiaries, has been placed in liquidation due to



## ASX RELEASE

the Redflow Groups' respective boards of directors. Redflow has developed a strategic plan to develop a larger scale X10 battery (based on its existing stack design) targeted at larger megawatt hour scale projects. Redflow received significant commercial interest in the X10 battery and, with a growing customer base, was proposing a new



## Zinc batteries: Redflow teams with Stanwell on 400 MWh project, ...

Australian zinc bromide flow battery specialist Redflow has struck a partnership with Queensland state-owned generation company Stanwell to work together on the development of a non-lithium long



## Redflow belatedly eyes local battery manufacture

The feasibility study is scheduled to be completed in early 2025 followed by a decision to proceed with the 5 MWh X10 battery project which is expected to be deployed in the first half of 2026. Further reading: The disappointment of overseas production - Lithium Australia (and

Redflow) Picture: Redflow's ZBM3 zinc-bromine flow battery



## Local manufacturing boost as Redflow partners with Stanwell on ...

This collaboration is set to develop and deploy Redflow's new X10 battery solution for a large-scale project of up to 400 MWh, potentially anchoring Redflow's planned manufacturing facility in Queensland, the company said in a media release. The feasibility study is scheduled for completion in early 2025, with a decision on the 5 MWh



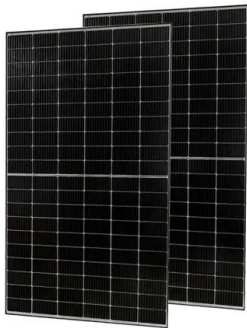
## Queensland battery manufacturer Redflow enters voluntary ...

Brisbane-headquartered zinc-bromine flow battery producer Redflow has entered into voluntary administration after it was unable to attract capital to scale up its X10 battery to target larger MWh scale projects.

## Redflow (ASX:RFX) and its Australian subsidiaries

Following "significant commercial interest", Redflow proposed a new factory be built and commissioned in Queensland to manufacture the

X10 batteries at scale. Government support had reportedly been received for the plan, but Redflow required significant "matching funding" from the Australian capital markets to access the government funding, which it ...



## Redflow enters voluntary administration after failing to secure funds

Redflow, a Brisbane-based zinc-bromine flow battery producer, has entered into voluntary administration after failing to secure capital to scale up its X10 battery to target larger projects.

## Redflow teams with Stanwell to advance zinc bromide ...

Redflow said the X10 is the "natural evolution" of its current zinc-bromine battery systems and designed for larger-scale projects. The system utilises the core stack technology that was developed for the company's ZBM3 ...

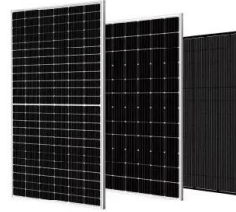


## Stanwell sign MOU with Redflow to deliver on Queensland's battery ...

Redflow and Stanwell will collaborate on the development and deployment of Redflow's new X10 battery solution for use in a large-scale project of up to 400 MWh, which will serve as a potential anchor order for Redflow's planned manufacturing facility in Queensland.

## Redflow goes into administration after failing to attract X10 battery

Australian flow battery company Redflow went into administration after failing to attract enough investment to fund a factory to build its X10 battery at scale. This modular, scalable zinc-bromine flow battery is aimed at MWh-scale projects. The company said it had a growing customer base and was proposing a new factory in Queensland.



## Redflow : delivering for Queensland's battery industry and jobs ...

Redflow and Stanwell will collaborate on the development and deployment of Redflow's new X10 battery solution for use in a large-scale project. Redflow Limited (ASX: RFX), a global leader in clean energy storage, today announced that it has made a significant step towards delivering local manufacturing through the signing of a Memorandum of

## Redflow Delivering For Queensland's Battery Industry And Jobs ...

Redflow and Stanwell will collaborate on the development and deployment of Redflow's new X10 battery solution for use in a large-scale project of up to 400 MWh, which will serve as a potential anchor order for Redflow's planned manufacturing facility in Queensland. The feasibility study is scheduled to be completed in early 2025





## Redflow draws early buyer interest in the collapsed Queensland

Just last month it signed an accord with Queensland generator Stanwell Corporation to collaborate on the deployment of Redflow's X10 battery in a 400-megawatt-hour project which could anchor its

## Australia's Redflow set for best day 13 months on battery

\*\* Says agreement for deployment of Redflow's X10 battery for use in a 400 MWh large-scale project \*\* More than 1.1 mln shares change hands, 3 times the 30-day avg of 397,890 shares \*\* As of last close, RFX down 31.9% this year. Oceania Reuters. Login or create a forever free account to read this news.



### HEAT DISSIPATION

Cold aisle containment, making optimal refrigeration effect;



## Australian flow battery pioneer put into administration after ...

The company had hoped to launch a megawatt-hour scale version of its battery, known as X10, Redflow designs flow battery technology that offers a much longer duration, safer and longer lasting

## Contact Us

For catalog requests, pricing, or partnerships, please visit:  
<https://bialydom.kolobrzeg.pl>