

## European Solar Energy Storage

# Large-scale photovoltaic energy storage system diagram



## Overview

---

Should energy storage be integrated with large scale PV power plants?

As a solution, the integration of energy storage within large scale PV power plants can help to comply with these challenging grid code requirements 1. Accordingly, ES technologies can be expected to be essential for the interconnection of new large scale PV power plants.

What are the energy storage requirements in photovoltaic power plants?

Energy storage requirements in photovoltaic power plants are reviewed. Li-ion and flywheel technologies are suitable for fulfilling the current grid codes. Supercapacitors will be preferred for providing future services. Li-ion and flow batteries can also provide market oriented services.

Which technology should be used in a large scale photovoltaic power plant?

In addition, considering its medium cyclability requirement, the most recommended technologies would be the ones based on flow and Lithium-Ion batteries. The way to interconnect energy storage within the large scale photovoltaic power plant is an important feature that can affect the price of the overall system.

What is a typical large scale PV plant configuration?

Fig. 3 shows a typical large scale PV plant configuration in absence of energy storage . PV panels are normally connected in series and parallel to form PV arrays. Each array can deliver a power of several hundred of kW up to few MW (direct current, DC).

Are energy storage services economically feasible for PV power plants?

Nonetheless, it was also estimated that in 2020 these services could be economically feasible for PV power plants. In contrast, in , the energy storage value of each of these services (firming and time-shift) were studied for a 2.5 MW PV power plant with 4 MW and 3.4 MWh energy storage. In this case, the

PV plant is part of a microgrid.

How a large scale PV power plant works?

As shown, large scale PV power plants have several generation units (generation unit = PV array + converter). But from the transmission system operator viewpoint, it is a single generator connected to the point of common coupling (PCC). Hence, the power delivered to the grid and the grid code fulfilment is checked at the PCC.

## Large-scale photovoltaic energy storage system diagram

---



### Understanding Energy Storage Photovoltaic System Diagrams: A ...

Let's face it - the energy storage photovoltaic system diagram isn't just an engineer's doodle anymore. It's become the blueprint for our clean energy future.

### A review of energy storage technologies for large scale photovoltaic

So, this review article analyses the most suitable energy storage technologies that can be used to provide the different services in large scale photovoltaic power plants. For this purpose, this article first summarizes the different characteristics of the ...



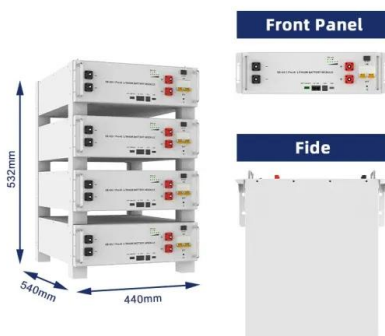
### A megawatt (MW)-scale photovoltaic/energy storage ...

This paper focuses on an iterative based solution for enhancing response of storage that included in DC generation system, to check its availability in terms of possible calculation load.

### A megawatt (MW)-scale photovoltaic/energy storage

## system (PV...

This paper focuses on an iterative based solution for enhancing response of storage that included in DC generation system, to check its availability in terms of possible calculation load.



## Energy Storage: An Overview of PV+BESS, its Architecture,

...

DC-DC coupled system needs to be located closely next to solar array and PCS on site. Consequently, the site layout is dictated by solar array size, solar PV layout.

## Large-scale photovoltaic energy storage system diagram

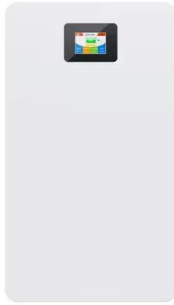
A standard grid connected photovoltaic energy system with Li-Ion battery storage can be viewed as consists of components such as PV module, inverter units, isolators, fuse unit, transformer (as required), and battery packs in delivery of its function as illustrated in Figure 1.



## Large-scale energy storage system operation logic diagram

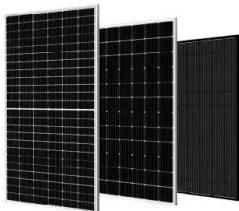
Large-scale energy storage technology is crucial to maintaining a high-proportion renewable energy power system stability and addressing

the energy crisis and environmental problems.



## Design Optimization of Utility-Scale PV and Storage Hybrid ...

o The BESS charges directly from PV DC  
o The DC coupled system presents a few additional electrical integration challenges  
o On some projects the benefits outweigh the challenges  
o The control system architecture is the same for AC and DC Coupled systems



## Schematic of large-scale solar plant with BESS

In most cases, the efficient utilization of renewable energy requires the employment of energy storage systems (ESSs), such as batteries and hydro-pumped storage systems.

## CALIFORNIA STATE UNIVERSITY NORTHRIDGE Large ...

In this chapter, the energy consumption rate is presented with a brief introduction of solar energy. Additionally, basics of PV cell and its characteristics are explained. Power system components required for the solar power system are also covered in this chapter.





## Photovoltaic Plant and Battery Energy Storage System ...

Although utility-scale solar photovoltaic (PV) power plants are becoming a cost-effective energy resource, there is belief within the energy industry that the increasing penetrations of PV technologies could potentially impact grid reliability.

### Contact Us

---

For catalog requests, pricing, or partnerships, please visit:  
<https://bialydom.kolobrzeg.pl>