

European Solar Energy Storage

Large clockwork energy storage device efficiency

**FLEXIBLE SETTING OF
MULTIPLE WORKING MODES**



Large clockwork energy storage device efficiency



What is the energy storage efficiency of the clockwork?

The efficiency of energy storage directly influences the accuracy of the timekeeping function. High-quality watches often employ refined clockwork systems that utilize sophisticated escapements to ensure minimal energy losses, thereby providing greater accuracy and ...

What is the principle of clockwork energy storage

Enhancing the lifespan and power output of energy storage systems should be the main emphasis of research. The focus of current energy storage system trends is on enhancing current technologies to boost their effectiveness, lower prices, and expand their flexibility to ...



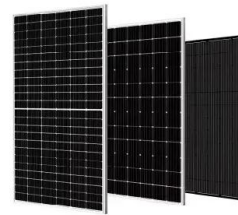
Comprehensive review of energy storage systems technologies, ...

A selection criteria for energy storage systems is presented to support the decision-makers in selecting the most appropriate energy storage device for their application.

Environmentally-friendly and high-efficiency multi-clockwork

energy

A clockwork and energy storage technology, applied in the field of mechanical energy storage devices, can solve the problems of unadjustable energy release and low energy storage efficiency, and achieve the effect of simple structure, low cost and large energy storage capacity



large clockwork energy storage device efficiency

Pumped hydro is the most efficient large-scale storage system, a technology that provides stability to the electrical system and can generate large amounts of clean energy with fast ...

Clockwork energy storage efficiency

The cost of energy storage. The primary economic motive for electricity storage is that power is more valuable at times when it is dispatched compared to the hours when the storage device is

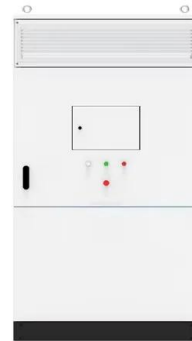


What is the energy storage efficiency of the clockwork?

The efficiency of energy storage directly influences the accuracy of the timekeeping function. High-quality watches often employ refined clockwork systems that utilize sophisticated escapements to ensure minimal energy ...

Clockwork Energy Storage Device: The Future of Mechanical Power Storage

Unlike lithium-ion batteries that degrade over time, clockwork systems store energy using springs and gears - think of a wind-up toy scaled up for industrial use.



How effective is the clockwork energy storage? , NenPower

Clockwork energy storage systems are increasingly being recognized for their numerous advantages over traditional energy storage technologies. One key benefit is their high operational efficiency, characterized by minimal energy losses ...

Large clockwork energy storage device

Large clockwork energy storage devices are enjoying record growth. The world's largest battery energy storage system so far is the Moss Landing Energy Storage Facility in California, US, where the first 300-megawatt



Contact Us

For catalog requests, pricing, or partnerships, please visit:
<https://bialydom.kolobrzeg.pl>