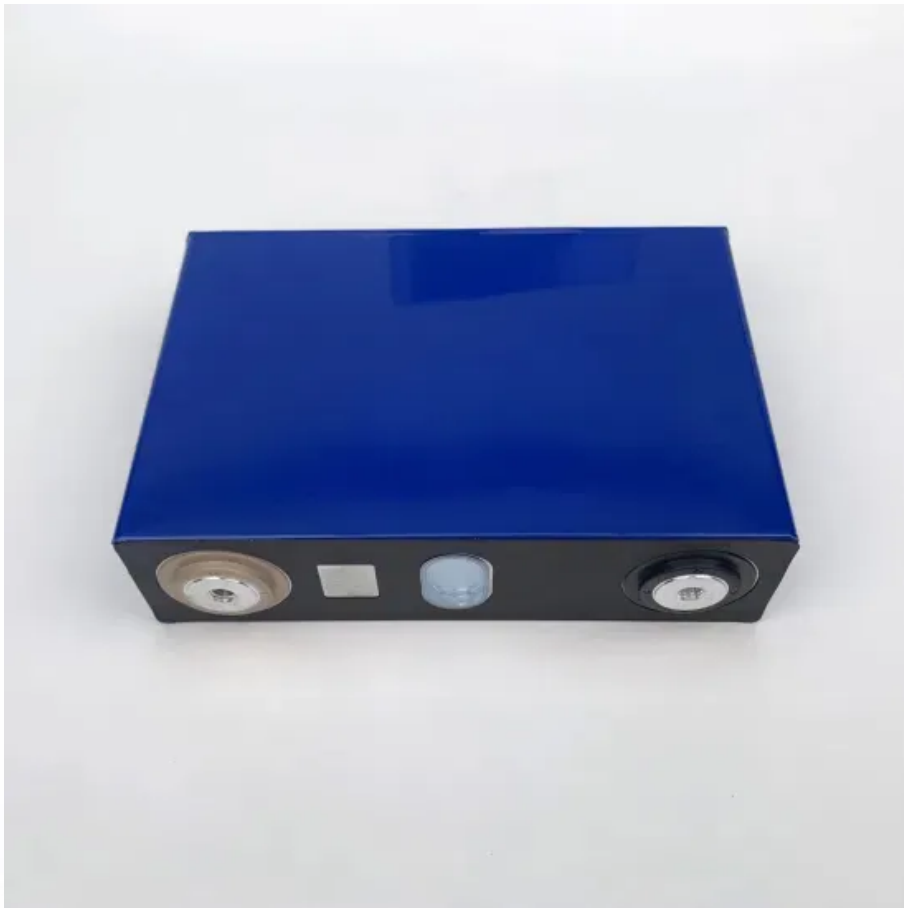


European Solar Energy Storage

Kers system Gabon



Overview

A kinetic energy recovery system (KERS) is an automotive system for recovering a moving vehicle's kinetic energy under braking. The recovered energy is stored in a reservoir (for example a flywheel or high voltage batteries) for later use under acceleration. Examples include complex high end systems such as the ZyteK, Flybrid, Torotrak and Xtrac used in Formula One racing and simple, easily manufactured and integrated differential based systems such as the Cambridge Passenger/Commercial Vehicle Kinetic Energy Recovery System (CPC-KERS). Xtrac and Flybrid are both licensees of Torotrak's technologies, which employ a small and sophisticated ancillary gearbox incorporating a continuously variable transmission (CVT). The CPC-KERS is similar as it also forms part of the driveline assembly. However, the whole mechanism including the flywheel sits entirely in the vehicle's hub (looking like a drum brake). In the CPC-KERS, a differential replaces the CVT and transfers torque between the flywheel, drive wheel and road wheel.

HistoryThe first of these systems to be revealed was the Flybrid. This system weighs 24 kg (53 lbs) and has an of 400 kJ after allowing for internal losses. A maximum power boost of 60 kW (81.6 , 80.4 HP) for 6.67 seconds is available. The 240 mm (9.4 i. HistoryThe first of these systems to be revealed was the Flybrid. This system weighs 24 kg (53 lbs) and has an of 400 kJ after allowing for internal losses. A maximum power boost of 60 kW (81.6 , 80.4 HP) for 6.67 seconds is available. The 240 mm (9.4 in) diameter flywheel weighs 5.0 kg (11 lbs) and revolves at up to 64,500 rpm. Maximum torque at the flywheel is 18 Nm (13.3 ftlbs), and the torque at the gearbox connection is correspondingly higher for the change in speed. The system occupies a volume of 13 litres. Already in 2006, a first KERS system based on supercapacitors has been studied at EPFL (Ecole Polytechnique Fédérale de Lausanne) in the framework of the development of the "Formula S2000". A 180kJ system has been developed in collaboration with other institutes (Multiphysic Modeling of a Hybrid Propulsion System for a Racecar Application, A. Rufer, P. Barrade, M. Correvon and J.-F. Weber, iamf EET-2008 : European Ele-Drive Conference, International Advanced Mobility Forum, Geneva, Switzerland, 11-13 March 2008). Two minor incidents were reported during testing of various KERS systems in . The first occurred when the team tested their KERS battery for

Kers system Gabon



A Look into the Future of Kinetic Energy Recovery Systems (KERS)

In these vehicles, the KERS system works in conjunction with the electric motor and battery to provide additional power during acceleration. By capturing and storing energy during braking, KERS systems help extend the electric-only driving range and reduce reliance on the internal combustion engine. This results in improved fuel efficiency and

ANALYSIS: Volvo Flybrid KERS technology

Volvo Car Group has been conducting extensive tests - working with UK-based tech firm Flybrid - on flywheel-based KERS (Kinetic Energy Recovery System) technology that it is claimed can yield fuel

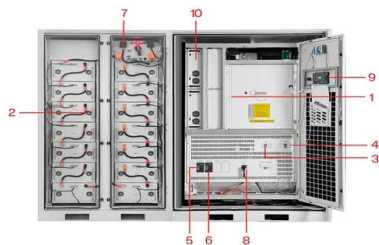


Kinetic Energy Recovery System

The KERS system adds mass which reduces acceleration due to the engine. The stored electrical energy from braking must more than compensate for this. Lithium-ion batteries have a very high energy per unit mass but a poor power per unit mass. Conversely an ultracapacitor has relatively low energy per unit mass, but a very high power per unit

Aprilia eSRZ , Electric scooter , Platum

The KERS system recovers kinetic energy from braking, extending the scooter's range. 8.5" TYRES WITH INNER TUBE. The 8.5-inch tyres with inner tubes provide optimum comfort for the rider by cushioning the shocks and vibrations of the e-scooter on the hands and feet when riding over rough or uneven roads. The inner tube inside the tyre enables



- | | |
|-----------------------------|-----------------------------|
| 1 PCS Module | 6 OPV2 side circuit breaker |
| 2 Battery room | 7 High Volt Box |
| 3 Grid side circuit breaker | 8 BAT side circuit breaker |
| 4 Load side circuit breaker | 9 LCD display screen |
| 5 OPV1 side circuit breaker | 10 MIPPT |

How Does the KERS System in F1 Cars Work?

The KERS system works by converting the kinetic energy generated by the brakes into electrical energy that can be stored and reused later. When a driver brakes, the KERS system captures some of the energy generated and stores it in a battery pack. This energy can then be used to provide a boost of speed for a few seconds during acceleration.

Prescriptions

If you are already registered click here to access the system. Order by email or place within the box between the entrance doors. Use the paper re-order slip printed on the right hand side of your repeat prescription. Just tick the items you need and either post it to the surgery or put it in the box at our entrance. (If you enclose an s.a.e



¿Qué es el KERS o freno regenerativo? Funcionamiento y

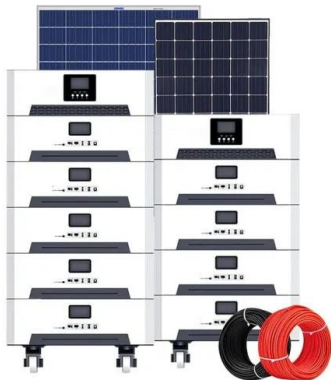
El KERS (Kinetic Energy Recovery System) o Sistema de Recuperación de Energía Cinética por

sus siglas en inglés, es también conocido como freno regenerativo. Te contamos su funcionamiento y



kinetic energy recovery system (all types of KERS)

4. WHAT IS KERS? The acronym KERS stands for Kinetic Energy Recovery System. Kinetic energy recovery systems (KERS) store energy when the vehicle is braking and return it when accelerating. During braking, energy is wasted because kinetic energy is mostly converted into heat energy or sometimes sound energy that is dissipated into the environment. ...



KERS DYNAMICS (KINETIC ENERGY RECOVERY SYSTEMS)

KERS (Kinetic Energy Recovery System). When the vehicle brakes or decelerates the flywheels stores rotational kinetic energy, allowing itself to rotate with about 60.000 rpm.

Comparative Study on Various KERS

Energy Recovery Systems (KERS) is a type of regenerative braking system which has different approaches to store and reuse the lost energy. This paper mainly highlights the different ways ...



?????? Kers ?????:???? 2032

What is the market size of the Global Kinetic Energy Recovery System (KERS) Market? The global KERS market size is expected to reach USD 10.78 billion by 2024 and is ...

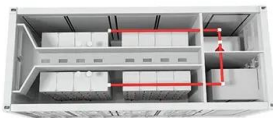


KERS - Wikipedie

KERS (Kinetic Energy Recovery System, český systém rekuperace kinetické energie) je soustava použitá u vozů Formule 1, která uchovává kinetickou energii ztracenou (ve formě tepla) při brzdění automobilu ve formě mechanické energie v setrvačnicku nebo jako energii elektrickou v akumulátorech nebo kondenzátorech. Takto

Key Event Requirements (KERs) System

Key Event Requirements (KERs) System We are happy to inform you that the much talked about FEI Key Event Requirements (KERs) System will be launched to cover all FEI events from 1 January 2024. The initial 14 KERs that have been identified, cover aspects such as ...



Kinetic Energy Recovery System (KERS)

Kinetic Energy Recovery System (KERS) - Hybridtechnik von Bosch Motorsport. Variabler Baukasten für einsatzspezifische Systemauslegung - Modulares Hybrid-Konzept für einfache Applikation - Bandbreite von der Formel 1 zu Tourenwagen und 24-Stunden-Rennen.

F1 KERS System: McLaren

McLaren Mercedes were the first team to test a system, but whispers of its existence soon saw it outlawed - a move some people at the time suggested was short sighted. 11 years later a KERS-equipped McLaren Mercedes finally started a ...



TELECOM CABINET

BRAND NEW ORIGINAL

HIGH-EFFICIENCY

¿Qué es el KERS? Cómo funciona, historia, desarrollo y

...

El KERS (Kinetic Energy Recovery System) o freno regenerativo es un sistema utilizado en automovilismo para recuperar la energía cinética generada durante el frenado y utilizarla para mejorar el rendimiento del motor. Este sistema se ...

Volvo Adding KERS to Production Cars in 2020

Volvo has updated its XC90 crossover for 2020 with a kinetic energy recovery braking system (KERS) that promises to improve fuel economy by 15 per cent. The 2020 XC90 will mark Volvo's first production application of KERS technology, whose use has previously been limited to Formula 1 racing. In the new XC90, KERS uses brake-by-wire [...]



[Leonardo, Omas rollermill](#)

OKS - Omas Kers System - allows Leonardo to recover the energy resulting from the motor on the slow cylinder. The fast motor instantly uses this energy, saving energy. The possibility to manage each grinding cylinder independently, providing only the energy required, makes this application unique.

The Use of Kinetic Energy Recovery Systems (KERS) in Racing

In Formula 1, KERS (Kinetic Energy Recovery System) provides a critical advantage by capturing and converting braking energy into a powerful boost for overtaking and acceleration. Introduced by the FIA in 2009, KERS has transformed the sport by allowing race cars to store up to 400 kJ of energy per lap using electric systems.



Kinetic Energy Recovery System (KERS).



Abstract+ Kinetic Energy Recovery System (KERS) is a system for recovering the moving vehicle's kinetic energy under braking and also to convert the usual loss in kinetic energy into gain in kinetic energy. When riding a bicycle, a great amount of kinetic energy is lost while braking, making start up fairly strenuous.

¿Qué es el KERS o freno regenerativo? Funcionamiento y ...

El KERS (Kinetic Energy Recovery System) es una tecnología que ha revolucionado la Fórmula 1 en los últimos años. Su objetivo es aprovechar la energía cinética generada por el coche durante su frenado para convertirla en energía eléctrica, que luego puede ser utilizada para aumentar la velocidad del coche en momentos clave de la carrera



How Does the KERS System in F1 Cars Work?

One such system is KERS. It was introduced in 2009 to support F1's two-fold strategy to promote the development of environment-friendly and road car-relevant technologies in F1 racing but wasn't widely adopted until ...

[Williams F1 KERS explained](#)

An interesting solution to the energy recovery problem. Another KERS supplier to go public recently is one of the Formula 1 teams itself. Ian Foley lent some momentum to the development of his system by convincing Williams F1 to buy

into the company. Now, as Williams Hybrid Power, and based at the team HQ in Grove, Oxfordshire, progress has been encouraging.



Kinetic Energy Recovery System

Kinetic Energy Recovery System. Kinetic Energy Recovery Systems (KERS) zijn systemen voor recuperatief remmen, die ontwikkeld worden voor zowel het wegverkeer als Formule-1-racewagens. Dit systeem zorgt ervoor dat remenergie, die normaal wordt omgezet in warmte, wordt opgeslagen.

Ducati Pro-I Evo Max Safe Ride , Electric scooter , Platum

The KERS system recovers kinetic energy from braking, extending the scooter's range. 8.5" TYRES WITH INNER TUBE. The 8.5-inch tyres with inner tubes provide optimum comfort for the rider by cushioning the shocks and vibrations of the e-scooter on the hands and feet when riding over rough or uneven roads. The inner tube inside the tyre enables



Employers

Pursuant to KRS 61.5991, effective July 1, 2024 the normal cost contribution rate for Kentucky Employees Retirement System (KERS) Nonhazardous employers changed from 9.97% to 8.44%. The normal cost contribution of 8.44% was approved by the General Assembly in the Executive Branch budget bill; therefore, the

8.44% rate will remain the same for



KERS System

KERS SYSTEM - KINETIC ENERGY RECOVERY SYSTEM. Farina Presse has developed and implemented a new highly energy-efficient system applied to hot forging presses. Energy-saving, state-of-the-art Kers presses (GLK Model) ...



Jak działa system KERS?

System KERS w pojeździe przeznaczonym do poruszania się po drogach publicznych jest montowany na tylnej osi, a w trakcie hamowania energia generowana przez tarcze hamulcowe powoduje obracanie się koła zamachowego nawet z prędkością 60 000 obr./min. W momencie gdy auto rusza, energia wydobywająca się z wirującego z zawrotną

De basis van Kinetic Energy Recovery System (KERS) in Formule 1

Vanaf 2011 keerde het systeem terug, nu met verbeterde prestaties en efficiëntie. Een significante verandering vond plaats in 2014, toen KERS evolueerde naar het bredere Energy Recovery System (ERS). Dit nieuwe systeem

omvatte niet alleen de kinetische energierugwinning (nu MGU-K genoemd), maar ook een thermische energierugwinning via ...



Kinetic Energy Recovery System

17 ?· The use of flywheel-based kinetic energy recovery system (KERS) offers the benefit of capturing and providing much higher mechanical power compared to the electrical ratings of ...

KERs

Key Event Requirements are referred to in FEI General Regulation Article 112.3 and detailed in FEI General Regulations Annex L. The table below lists all 14 KERs and the relevant FEI rules that must be followed in order for each KER to be achieved, for example all of the detailed requirements that must be considered for KER 1 to be met (Event Biosecurity) are listed in FEI ...



Contact Us

For catalog requests, pricing, or partnerships, please visit:
<https://bialydom.kolobrzeg.pl>