

## European Solar Energy Storage

# How much solar energy strikes 1 square meter per second



## Overview

---

How much solar energy hits the Earth per second?

: The sun emits 1.4 kW of energy per square meter of surface area that is perpendicular to the direction of the sun. This means that the sun emits a huge amount of energy in the form of electromagnetic radiation, most of which is reflected back into space.

How much solar energy does a square meter of Earth get?

When the sun is shining, each square meter of Earth gets about 1000 watts of solar energy every second. This energy is essential for powering our planet and driving natural processes. By understanding solar insolation and absorption rates, you can optimize solar panel efficiency.

How much sunlight hits each square meter of Earth every second?

Discover how much sunlight hits each square meter of Earth every second and learn how to optimize solar panel efficiency. When the sun is shining, each square meter of Earth gets about 1000 watts of solar energy every second. This energy is essential for powering our planet and driving natural processes.

How much solar energy does the Earth absorb per square meter?

Globally, over the course of the year, the Earth system—land surfaces, oceans, and atmosphere—absorbs an average of about 240 watts of solar power per square meter (one watt is one joule of energy every second). How much solar energy falls per square meter on the surface of the Earth in kw?

.

How much solar energy does the Earth receive?

This means that, on average, each square meter of the Earth's surface receives around 1,000 watts of solar energy. However, due to the Earth's

atmosphere and the fact that the Earth's surface is not perfectly reflective, only a fraction of this energy actually reaches the ground.

How much energy does the sun emit per square meter?

The sun emits 1.4 kW of energy per square meter of surface area that is perpendicular to the direction of the sun. This means that the sun emits a huge amount of energy in the form of electromagnetic radiation, most of which is reflected back into space. How Much Solar Energy Hits The Earth In A Day?

:

## How much solar energy strikes 1 square meter per second

---



### How much energy from the sun reaches Earth?

All told, Earth pulls in a staggering 173,000 terawatts (that's trillions of watts!) of solar energy constantly. To put that in perspective, it's more than 10,000 times the entire ...

### How much solar energy hits the Moon? - Profound-tips

How much solar energy hits the Moon per square meter? A full moon leads to illumination equaling 0.108 lux. A lux, by comparison, equals 1 lumen per square meter. This ...



### Climate Science Investigations South Florida

A watt is a unit of power equal to 1 joule of energy per second, so radiation intensity is the rate of energy flow (joules per second) per square meter. The following figure ...

### Solar Radiation & The Earth's Energy Balance , Dawn ...

Solar Radiation & The Earth's Energy Balance

The Earth's climate is a solar powered system. Globally, over the course of the year, the Earth system--land surfaces, oceans, and atmosphere--absorbs an average of about 240 watts of ...



## Solar Heat

The energy density of solar radiation at Earth's distance from the Sun (150,000,000 kilometers) averages 1361 joules per second per square meter. This is the value of what we call the "solar constant", although though there is some ...

## The Importance of Understanding Clouds

The Balance of Power in the Earth-Sun System  
 The Sun is the major source of energy for Earth's oceans, atmosphere, land, and biosphere.  
 Averaged over an entire year, approximately 342 ...



## homework and exercises

This problem is from the book by Arthur Beiser, Concepts of Modern Physics, example 1.7. Solar energy reaches the earth at the rate of about \$1.4\$ kW per square meter of ...



## Understanding Solar Energy

Different types of solar panels will have different conversion efficiencies (the fraction of solar energy converted into electrical energy), but utility-scale panels in the US are generally 20-23% efficient. The more intense ...



## How Much Solar Energy Hits The Earth Per Square Meter

How much energy does 1 square meter of the Earth absorb? Globally, over the course of the year, the Earth system--land surfaces, oceans, and atmosphere--absorbs an ...

## Does the sun really transmit our annual energy needs in 1 hour?

To find the energy the Earth receives from the sun in one hour, we multiply the power by the number of seconds in an hour: Energy = Power x Time =  $1.7361 \times 10^{17} \text{W} \times 3,600 \text{ seconds}$  ? ...



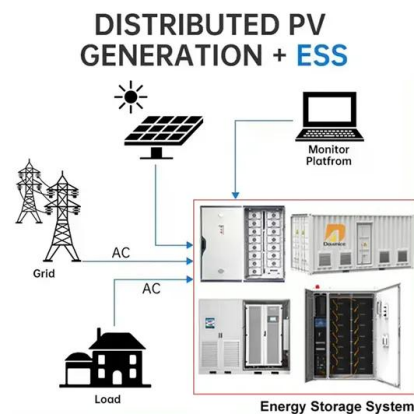
## chapter 4 : Solar Fundamentals Flashcards , Quizlet

Study with Quizlet and memorize flashcards containing terms like The location that is most likely to have the highest solar irradiance is a, On a typical clear day how much solar irradiance ...



## Problem 2 Overhead sunlight arrives on the [FREE SOLUTION] ...

Overhead sunlight arrives on the surface of the earth at an intensity of about 1,000 W / m<sup>2</sup>. How many photons per second strike a solar panel whose area is 1.6 square meters, if the typical ...

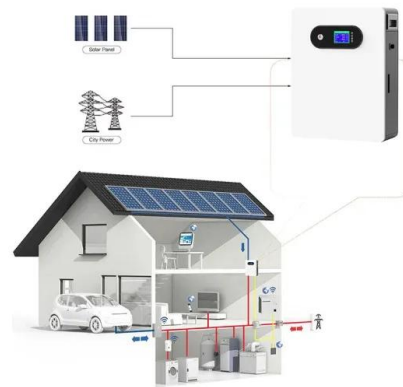


## How much solar energy is needed per square meter? , NenPower

The effectiveness of solar panels, often referred to as their conversion efficiency, plays a crucial role in determining how much solar energy can be harvested per square meter. ...

## When the Sun Is Shining, How Much Solar Energy Falls on a Square Meter

When the sun is shining, each square meter of Earth gets about 1000 watts of solar energy every second. This energy is essential for powering our planet and driving natural ...



## Formula between solar energy and wavelength? How ...

So, the total energy is 63,359,000 Watts per square meter of solar surface which drops to 1,367.5 Watts per square meter at Earth's surface one astronomical unit away.



## How much irradiation from the sun is required to ...

Interested to know how to calculate how much energy photovoltaic (PV) panels would produce given x amount of solar irradiation per day - amount of direct sunlight and how much that might be effected by y ...



## Climate and Earth's Energy Budget

At Earth's average distance from the Sun (about 150 million kilometers), the average intensity of solar energy reaching the top of the atmosphere directly facing the Sun is about 1,360 watts ...



## Evaluating Plants as Energy Stores

Energy taken in by plants per second, per square meter of ground covered by plants =  $95 \text{ (W/m}^2) * 0.86 * 0.046 = 3.76 \text{ W}$  for every square meter of ground. This means that a plant ...



## How much of the Earth is hit by sunlight? - MassInitiative

How much energy does the sun radiate in one second? The sun releases energy at a mass-energy conversion rate of 4.26 million metric tons per second, which ...

## How Much Solar Energy Hits The Earth? Uncovering The Power ...

Every day, around 1367 watts per square meter ( $\text{W/m}^2$ ) of solar radiation hits our planet! That amount may seem small - but it's more than enough to power many of our ...



## Solar Energy Per Square Meter: How Much Power ...

As the world increasingly shifts towards renewable energy, it's essential for homeowners and businesses to understand solar energy production comprehensively. This article explores solar energy per square meter and the ...



## How much solar energy can you harvest from 1 ...

There is around 342 watts per square meter hitting earth. However, the atmosphere reflects a large portion and about 168 watts per square meter actually hit the surface. This number varies based on the time of the ...



## How many joules of Solar energy in 1 sq meter?

On average, the amount of solar energy hitting 1 square meter of the Earth's surface is about 1000 watts, or 1000 joules per second under full sun exposure.

## Contact Us

For catalog requests, pricing, or partnerships, please visit:  
<https://bialydom.kolobrzeg.pl>