

European Solar Energy Storage

How much solar energy is received on earth



Overview

Approximately 173,000 terawatts of solar energy continuously strike the Earth's atmosphere. However, only a fraction of this immense power – about 30% – is absorbed by the Earth's surface, enough to power our planet many times over.

Approximately 173,000 terawatts of solar energy continuously strike the Earth's atmosphere. However, only a fraction of this immense power – about 30% – is absorbed by the Earth's surface, enough to power our planet many times over.

There are approximately 173,000 terawatts of solar energy available on Earth at any given moment, equivalent to over 10,000 times the world's total energy use. 2. Solar energy hits the Earth's surface at about 1,000 watts per square meter in peak sunlight conditions, allowing for vast potential.

Approximately 173,000 terawatts of solar energy continuously strike the Earth's atmosphere. However, only a fraction of this immense power – about 30% – is absorbed by the Earth's surface, enough to power our planet many times over. The amount of solar energy that reaches the top of Earth's.

Globally, over the course of the year, the Earth system—land surfaces, oceans, and atmosphere—absorbs an average of about 240 watts of solar power per square meter (one watt is one joule of energy every second). The absorbed sunlight drives photosynthesis, fuels evaporation, melts snow and ice, and.

The surface of the Earth receives solar energy at an average of 343 W/m^2 . If we multiply this times the surface area of the Earth, about $5 \times 10^{14} \text{ m}^2$, we get $1715 \times 10^{14} \text{ W}$. But, 30% of this is reflected, and only 30% of the Earth is above sea level, so the usable solar energy we receive on the land.

Since Earth is a sphere, and sunlight hits at all sorts of angles, the average solar radiation spread across the whole planet is about a quarter of that solar constant – roughly 340 W/m^2 . Why a quarter?

Because at any given moment, half the Earth is in darkness, not soaking up any rays! All told.

The Sun is generally considered to produce a constant amount of power (although there are small variances in the output energy depending on sunspot cycles) with a surface intensity of $633 \times 10^7 \text{ W m}^{-2}$, expressed in units of power per unit area. As the Sun's rays spread into space this radiation. How much solar energy reaches Earth's surface?

At Earth's average distance from the Sun (about 150 million kilometers), the average intensity of solar energy reaching the top of the atmosphere directly facing the Sun is about 1,360 watts per square meter, according to measurements made by the most recent NASA satellite missions. How much sun energy reaches the Earth's surface?

.

How much energy does the Earth receive from sunlight?

Science tells us that every square meter of the earth's surface, when exposed to direct sunlight, receives about 1000 watts (1 kilowatt) of energy from the sun's light. How much solar energy hits the Earth per day?

.

How much solar energy does the Earth receive per square kilo meter?

1.4 KW solar energy is received by the earth per square kilo meter. The Earth receives 174 petawatts (PW) of incoming solar radiation (insolation) in the upper atmosphere. Roughly 30% is deflected to space as the rest is absorbed by clouds, oceans and land masses. Even when we use 5% of this energy, it's greater than 50 occasions our requirement.

How much solar energy does the Earth absorb per square meter?

Globally, over the course of the year, the Earth system—land surfaces, oceans, and atmosphere—absorbs an average of about 240 watts of solar power per square meter (one watt is one joule of energy every second). How much solar energy falls per square meter on the surface of the Earth in kw?

.

How much energy does solar generate a year?

Solar generates 23,000 terawatt years of energy per year. Believe it or not, these solar energy numbers are conservative — they assume only 35% of sunlight gets through the atmosphere and they only measure sunlight falling on land masses. How much energy is this?

To put it in perspective, your monthly electric bill is measured in kilowatt hours.

What percentage of solar energy is absorbed by Earth?

About 23 percent of incoming solar energy is absorbed in the atmosphere by water vapor, dust, and ozone, and 48 percent passes through the atmosphere and is absorbed by the surface. Thus, about 71 percent of the total incoming solar energy is absorbed by the Earth system.

How much solar energy is received on earth

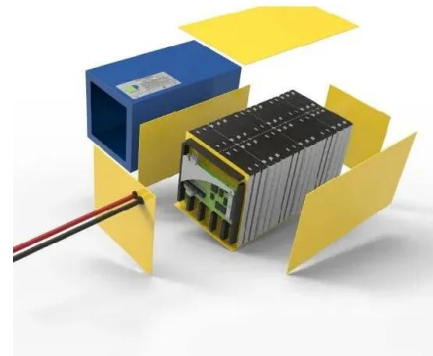


The earth gets more solar energy in one hour than the entire world uses

Earth's continents receive 23,000 terawatt hours of solar energy each year, compared to the 18.5 terawatt hours used by all of modern society each year.

How much solar energy is there on Earth? , NenPower

At any given moment, the Earth receives about 173,000 terawatts of solar energy. This immense figure demonstrates the potential of solar energy as a sustainable ...



How much energy is received by the Earth per square meter?

How much energy is received by the Earth per square meter? At Earth's average distance from the Sun (about 150 million kilometers), the average intensity of solar ...



Climate and Earth's Energy Budget

The atmosphere and the surface of the Earth together absorb 71 percent of incoming solar radiation, so together, they must radiate that

much energy back to space for the ...



What Percentage of Incoming Solar Energy Is ...

Kickstart your understanding of Earth's energy balance by delving into the intriguing fact that around 47% of incoming solar energy is absorbed by its surface.

ATM S 211

Notes for the lecture on Wednesday October 10
Planetary Energy Balance How do we calculate
the Earth's effective temperature? Use the idea
of an energy balance: What comes in = what ...



The Energy Budget

Accounting for all the energy that enters and leaves the Earth system helps us understand how the planet maintains a habitable temperature. This accounting of energy is known as Earth's radiation budget.

How much solar energy does the Earth receive every ...

Earth receives approximately 173,000 terawatts of solar energy every day, which equals about 6,000 times the total energy consumption of the planet. 1. Every sq...



How much solar energy does the Earth receive every ...

Every square meter of the Earth's surface receives about 1,000 watts of solar power at peak sunlight hours; this significant potential can be harnessed through various technologies.

Does the sun really transmit our annual energy needs in 1 hour?

Calculate the total power the Earth receives from the sun per second: Power = Solar Constant × Area = 1,361 Watts/m² × 1.27516 × 10¹⁴ m² = 1.7361 × 10¹⁷ Watts To find the energy ...



How much energy from the sun reaches Earth?

All told, Earth pulls in a staggering 173,000 terawatts (that's trillions of watts!) of solar energy constantly. To put that in perspective, it's more than 10,000 times the entire ...



Amount of Solar Energy Hitting Earth Every Second, ...

Is the amount of solar energy sent to Earth by the sun each day adequate to satisfy human energy needs? Every single moment, the sunlight that reaches Earth is way more than what the whole world needs for energy in a ...



How Much Solar Energy Hits the Earth?

The Immense Solar Constant The amount of solar energy reaching the top of Earth's atmosphere is often referred to as the solar constant. While technically not constant, its ...

What is Earth's Energy Budget? Five Questions with a Guy Who ...

...

Earth's energy budget. Not a familiar concept? Maybe you're scratching your head, wondering, what is that? Don't worry. You're not the only one.





The Importance of Understanding Clouds

If we measure the total amount of energy Earth receives from the Sun and then subtract the total amount of energy Earth reflects and emits back to space, we arrive at a number called an ...

Energy and Matter Cycles

Explore the energy and matter cycles found within the Earth System. Energy Cycle Energy from the Sun is the driver of many Earth System processes. This energy flows ...

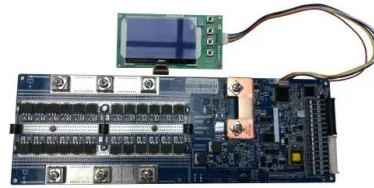


Earth's energy flow

Flows on the Earth's Surface Although the solar energy flow is the most dominant flow, it is not the only source of energy on the Earth. Energy from the use of nuclear fuels, as well as energy due to the tides and the thermal energy from ...

The Earth-Atmosphere Energy Balance

The earth-atmosphere energy balance is achieved as the energy received from the Sun balances the energy lost by the Earth back into space. In this way, the Earth maintains a stable average temperature and therefore a ...

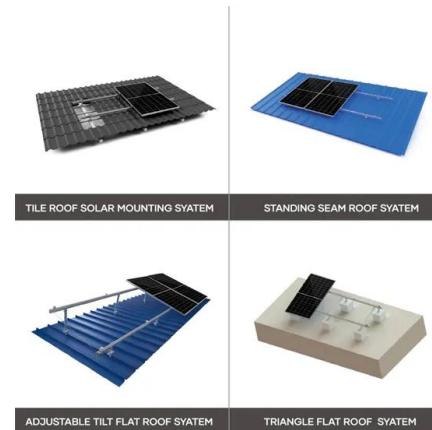


How Much Solar Energy Hits The Earth Per Square Meter

How much solar energy falls per square meter on the surface of the Earth in kw? Science tells us that every square meter of the earth's surface, when exposed to direct ...

How much solar energy does the Earth receive every day

Every square meter of the Earth's surface receives about 1,000 watts of solar power at peak sunlight hours; this significant potential can be harnessed through various ...



The Earth's Radiation Budget

The energy entering, reflected, absorbed, and emitted by the Earth system are the components of the Earth's radiation budget. Based on the physics principle of conservation of energy, this radiation budget represents ...

[Absorption / reflection of sunlight](#)

Global Change Infographic The amount of sunlight that is absorbed or reflected by Earth's surface and atmosphere affects the energy budget, the amount of energy available on Earth that drives ...



**2MW / 5MWh
 Customizable**

[bio chapter 15 Flashcards , Quizlet](#)

Study with Quizlet and memorize flashcards containing terms like 1. Every place on earth receives the same number of hours of sunlight each year--an average of 12 hours per day. Why do ...

How much energy from the sun reaches Earth?

Posted on April 23, 2022 (Updated on July 30, 2025) How much energy from the sun reaches Earth? Space & Navigation The Sun's Energy: Just How Much Hits Earth? Our sun, that giant ...



Solar Energy Potential and Utilization , EARTH 104: Energy, ...

In 2018, we used about 600×10^{18} Joules of energy, which is just a shade less than 0.1% of the harvestable solar energy we receive on the land. This means that even if we got all of our ...



Contact Us

For catalog requests, pricing, or partnerships, please visit:
<https://bialydom.kolobrzeg.pl>