

European Solar Energy Storage

How much energy does a 15khw panel solar produce



Overview

It explains that a 15kW system can generate 15,000 watts of power, roughly equivalent to powering 500 laptops simultaneously. However, various factors like weather, temperature, and equipment affect actual power output.

It explains that a 15kW system can generate 15,000 watts of power, roughly equivalent to powering 500 laptops simultaneously. However, various factors like weather, temperature, and equipment affect actual power output.

A 300-watt solar panel will produce anywhere from 0.90 to 1.35 kWh per day (at 4-6 peak sun hours locations). A 400-watt solar panel will produce anywhere from 1.20 to 1.80 kWh per day (at 4-6 peak sun hours locations). The biggest 700-watt solar panel will produce anywhere from 2.10 to 3.15 kWh.

By inputting your solar panel system's total size and the peak sun hours specific to your location, this calculator simplifies the complex process of estimating the energy your solar panels can generate. Total Solar Panel Size (W): ?

Panel Type: ?

Monocrystalline (15% Efficiency) Polycrystalline.

Two variables dictate how much energy your solar panels produce: 1. Solar Panel Wattage: Higher-wattage panels generate more kWh. Common sizes include 100W (small setups), 300-400W (residential), and 500W+ (commercial systems). Example: A 500W panel produces 50% more energy than a 250W panel under.

The 15kW solar array is suitable for commercial buildings because it can produce a daily average of 60kWh. It may be appropriate for residential customers if they have sufficient space and high power usage patterns. Electricity consumption varies from one house to another based on the number of.

It explains that a 15kW system can generate 15,000 watts of power, roughly equivalent to powering 500 laptops simultaneously. However, various factors like weather, temperature, and equipment affect actual power output. The article also compares the power output of a 15kW system to a 7kW system.

Most of the home solar panels that installers offer in 2025 produce between 390 and 460 watts of power, based on thousands of quotes from the EnergySage Marketplace. Each panel can produce enough power to run appliances like your TV, microwave, and lights. To power an entire home, most homeowners. How much power does a 15kW solar system produce?

The article discusses the details of a 15kW solar power system, including its power generation, space requirements, and cost. It explains that a 15kW system can generate 15,000 watts of power, roughly equivalent to powering 500 laptops simultaneously. However, various factors like weather, temperature, and equipment affect actual power output.

How many kWh do solar panels generate a year?

We will also calculate how many kWh per year do solar panels generate and how much does that save you on electricity. Example: 300W solar panels in San Francisco, California, get an average of 5.4 peak sun hours per day. That means it will produce $0.3\text{kW} \times 5.4\text{h/day} \times 0.75 = 1.215$ kWh per day. That's about 444 kWh per year.

How many kWh can a 100 watt solar panel produce a day?

Here's how we can use the solar output equation to manually calculate the output: $\text{Solar Output (kWh/Day)} = 100\text{W} \times 6\text{h} \times 0.75 = 0.45$ kWh/Day In short, a 100-watt solar panel can output 0.45 kWh per day if we install it in a very sunny area.

How many kWh does a 300W solar panel produce a day?

We can see that a 300W solar panel in Texas will produce a little more than 1 kWh every day (1.11 kWh/day, to be exact). We can calculate the daily kW solar panel generation for any panel at any location using this formula. Probably, the most difficult thing is to figure out how much sun you get at your location (in terms of peak sun hours).

How many Watts Does a solar panel produce?

Panel wattage is related to potential output over time — e.g., a 400-watt solar

panel could potentially generate 400 watt-hours of power in one hour of direct sunlight. 1,000 watts (W) equals one kilowatt (kW), just as 1,000 watt-hours (Wh) equals one kilowatt-hour (kWh). How much energy does a solar panel produce?

.

How much power does a home solar panel produce?

Most home solar panels included in EnergySage quotes today have power output ratings between 390 and 460 watts. The most frequently quoted panels are around 450 watts, so we'll use this as an example.

How much energy does a 15kwh panel solar produce



How Much Energy Do Solar Panels Produce Per Day?

Solar panels produce as much electricity as possible by converting the sun's power into usable energy, providing a clean alternative to fossil fuels.

How Much Electricity Does a Solar Panel Produce?

Learn how much power a solar panel produces and what impacts output, from panel type to sunlight exposure, to help you plan your solar investment.



How Much Power Does a 15kW Solar System Produce?

Introduction Solar panels and systems are available in various sizes and outputs. Depending on our needs, we may need solar systems that produce as little as 4kW or as much as 15kW. Here, we look at how much power a 15kW solar

...

What Is the Energy Output of a Solar Panel? A ...

With the rising demand for renewable energy,

solar panels have become a popular choice for homeowners and businesses alike. But one common question remains: how much electricity does a solar panel produce? ...



48V 100Ah



How many kWh does a solar panel produce?

Want to learn how much power a solar panel produces? We'll break down what you need to know and how to calculate your solar panel's energy production.

How to Calculate Daily kWh from Your Solar Panels - EcoVault

Calculate how many kWh a solar panel produces daily with our easy formula + chart. Learn how panel size and peak sun hours impact energy output in your state.



12V 10AH



Solar Panel Output Calculator , Get Maximum Power ...

Use Solar Panel Output Calculator to find out the total output, production, or power generation from your solar panels per day, month, or in year.

How to Calculate Daily kWh from Your Solar Panels - ...

Calculate how many kWh a solar panel produces daily with our easy formula + chart. Learn how panel size and peak sun hours impact energy output in your state.

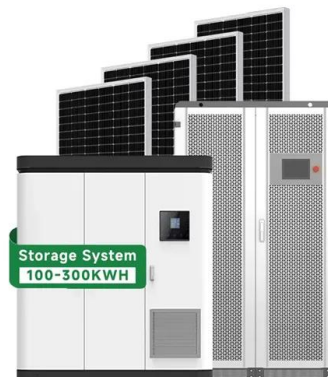


[PVWatts Calculator](#)

NREL's PVWatts ® Calculator Estimates the energy production of grid-connected photovoltaic (PV) energy systems throughout the world. It allows homeowners, small building owners, installers and manufacturers to easily develop estimates of ...

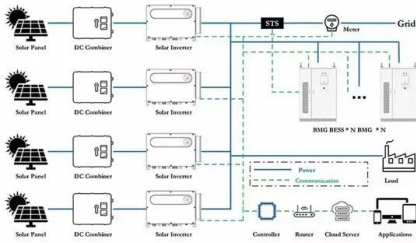
How Much Energy A Solar Panel Produce?

Solar panels are a vital component of renewable energy systems, and understanding their power output is key to optimizing performance and achieving energy goals. This guide explores the factors influencing solar panel performance, including wattage rating, panel efficiency, sunlight intensity, and temperature.



How Much Power Does a 15kW Solar System Produce?

Here, we look at how much power a 15kW solar system can generate, how much space it's going to take up, and how much money you'll be spending on an installation.



Solar Panel Output Calculator , Get Maximum Power Output

Use Solar Panel Output Calculator to find out the total output, production, or power generation from your solar panels per day, month, or in year.



How much electricity does a 15kw solar power generator ...

A 15 kW solar power generator can produce between 60 kWh to 75 kWh daily, depending on various factors. Key elements influencing this output include geographical location, weather conditions, orientation, and angle of solar panels.



How many kWh does a solar panel produce?

Want to learn how much power a solar panel produces? We'll break down what you need to know and how to calculate your solar panel's energy production.





Solar Panel kWh Calculator: kWh Production Per Day, Month, Year

Based on this solar panel output equation, we will explain how you can calculate how many kWh per day your solar panel will generate. We will also calculate how many kWh per year do solar panels generate and how much does that save you on electricity.

How Much Power Does a 15kW Solar System Produce per Day?

A 15 kW solar system may be suitable for residential customers as long as you have roof space and consistently high energy consumption patterns. This solar array would comprise 40 to 50 solar panels (depending on their power) and can generate an average of 60kWh of electricity per day.



[Solar Panel Output Calculator](#)

How much power or energy does solar panel produce will depend on the number of peak sun hours your location receives, and the size of a solar panel. just to give you an idea, one 250-watt solar panel will produce about ...

How Much Power Does a 15kW Solar System Produce per Day?

Here, we look at how much power a 15kW solar system can generate, how much space it's going to take up, and how much money you'll be spending on an installation.



How Many kWh Does A Solar Panel Produce Per Day?

It's quite interesting to see exactly how many kWh does a solar panel produce per day. We will do the math, and show you how you can do the math quite easily.

Contact Us

For catalog requests, pricing, or partnerships, please visit:
<https://bialydom.kolobrzeg.pl>