

## European Solar Energy Storage

# How does the corolla hybrid energy storage motor work



## Overview

---

The motor-generators are connected to the transmission and contribute to both propulsion and energy generation. The high-voltage battery serves as the energy storage unit for the electric motor (s). It's typically a nickel-metal hydride (NiMH) or lithium-ion (Li-ion) battery pack, chosen for its.

The motor-generators are connected to the transmission and contribute to both propulsion and energy generation. The high-voltage battery serves as the energy storage unit for the electric motor (s). It's typically a nickel-metal hydride (NiMH) or lithium-ion (Li-ion) battery pack, chosen for its.

At the core of the Toyota Corolla Hybrid's powertrain lies the Synergy Drive system. This ingenious combination of a gasoline engine and an electric motor seamlessly blends power and efficiency. But how does it all come together?

The Corolla Hybrid 's heart is a 1.8-liter four- cylinder gasoline.

Toyota's Hybrid Synergy Drive can operate in electric-mode, gas-mode, or both. A sophisticated energy management system continuously optimizes performance and fuel economy. Regenerative braking converts energy into battery charge every time you decelerate, making the powertrain up to 70% cleaner.

It obtains its electricity from the hybrid battery by way of the power control unit. In addition to saving on gasoline and producing no emissions, the electric drive motor aids in acceleration by instantaneously delivering the maximum torque. Think of it as a win-win scenario. The engine and.

This motor works in tandem with the gas engine to propel the vehicle. When starting from a standstill or cruising at low speeds, the electric motor can operate independently, reducing the need for gas and resulting in quieter, emission-free driving. The integration of the electric motor with the. How does a Corolla hybrid work?

**Regenerative Braking:** When the driver brakes, the Corolla Hybrid's system captures the kinetic energy that would otherwise be lost as heat. This energy

is converted into electricity and used to recharge the battery, increasing overall efficiency. The Corolla Hybrid 's innovative engine design offers a multitude of advantages:.

How does Toyota's hybrid system work?

Read on to discover more about the intricacies of Toyota's hybrid system and its components, operation, and benefits. Toyota's HSD system consists of two key components: a traditional gasoline engine and an electric motor. Unlike conventional engines found in other vehicles, Toyota designs the gas engines in its hybrids for maximum efficiency.

How long does a Toyota hybrid battery last?

More than 99% of Toyota hybrids sold since 2000 still have their original battery. They're built to last and covered by a 10-year, 240,000 km warranty. Discover how Toyota's hybrid system works using electric and gas power. Learn how energy is managed, how regenerative braking works, and why it's so efficient.

How does Toyota's Self-Charging Hybrid system work?

Toyota's fully self-charging hybrid system uses two powerplants in one vehicle: one battery-powered electric motor and a petrol-driven internal combustion engine. A clever power control unit and power split device work with the gearbox to smoothly distribute the power from both the engine and electric motor as smoothly as possible.

How does Toyota Hybrid Synergy Drive work?

Toyota's Hybrid Synergy Drive can operate in electric-mode, gas-mode, or both. A sophisticated energy management system continuously optimizes performance and fuel economy. Regenerative braking converts energy into battery charge every time you decelerate, making the powertrain up to 70% cleaner than conventional engines.

Why should you buy a Toyota Corolla hybrid?

The Toyota Corolla Hybrid stands as a testament to the advancements in hybrid technology. It delivers exceptional fuel economy and performance without compromising on driving enjoyment. As technology continues to evolve, we can expect even more efficient and powerful hybrid vehicles in the future. Toyota Corolla Tires: What PSI Should You Use?

## How does the corolla hybrid energy storage motor work

---



### Does the Toyota Corolla Hatchback Come in Hybrid? You Won't ...

The Toyota Corolla has been a mainstay in the compact car segment for decades, known for its reliability, affordability, and fuel efficiency. In recent years, the Corolla ...

### How Do You Charge a Toyota Corolla Hybrid? The Ultimate ...

The Toyota Corolla Hybrid is a popular choice for drivers seeking fuel efficiency and a smooth, quiet ride. But one question often arises: how do you charge a Toyota Corolla ...



### How does the Toyota Corolla Hybrid switch between electric and ...

The Toyota Corolla Hybrid achieves power conversion in the following ways: 1. **Energy Recovery**: When a vehicle decelerates or brakes, the motor converts into a ...



### How does the Corolla energy storage work?

The Corolla energy storage system is designed to

efficiently incorporate energy from multiple renewable sources, including solar, wind, and hydroelectric power.



### How Hybrid Vehicles Work

Toyota Hybrid Components Gas Engine The main source of power for Toyota's hybrids remains the gasoline engine. But these aren't your ordinary powertrains. They're built for high efficiency ...

### Do Hybrid Vehicles Need to Be Plugged in to ...

Consumer Reports fills you in on whether hybrids vehicles need to be plugged in to charge and looks at how long hybrid batteries last and how much they cost to replace.



### How does a Corolla Hybrid work? Corolla Hybrid is a perfect ...

Corolla Hybrid is a perfect harmony of power and efficiency. At the heart of this cutting edge tech lies the Hybrid Synergy Drive, a seamless integration of a gas engine and an ...

## Car Education: How Does Toyota Hybrid System Work

We all know what a hybrid car is, but how exactly does it work? Watch the video below to find out how the Toyota Product Sales Education team explains what to know about ...



## How does Toyota's self-charging hybrid system work?

Instead of energy being lost as heat (in the case of most braking systems) Toyota's system captures it and uses it to recharge the battery. It's a fantastic tool, and can recycle a lot of energy - especially in slow-moving traffic.

## Unveiling the Secrets of Toyota Hybrid Cars: A Comprehensive

...

The engine and motor work together to provide power to the wheels, with the motor assisting the engine during acceleration and other high-demand situations. The hybrid ...



## How Does A Toyota Corolla Hybrid Work

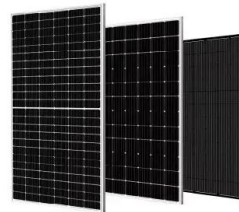
The primary distinction between a hybrid automobile and an SUV is the presence of an electric motor and a battery in addition to the internal combustion engine. With hybrid technology, the ...



## WHAT TYPE OF BATTERY DOES THE COROLLA HYBRID USE

Most plug-in hybrids and all-electric vehicles use lithium-ion batteries. Energy storage systems, usually batteries, are essential for all-electric vehicles, plug-in hybrid electric vehicles (PHEVs),

...



Modular design,  
unlimited combinations in parallel  
**BUILT-IN DUAL FIRE PROTECTION MODULE**



## I Drove the 2025 Toyota Corolla Hybrid: ...

The Corolla Hybrid takes to hybridization exactly as expected. Some of Toyota's marketing materials are shockingly honest about who is buying the Corolla Hybrid, and ...

## How Does the Toyota Corolla Hybrid Engine Work? Unveiling the ...

This motor provides instant torque, giving the Corolla Hybrid a smooth and responsive acceleration, particularly at lower speeds. It's also responsible for regenerative ...





## How Toyota Hybrid Systems Work , Electric + Gas ...

Discover how Toyota's hybrid system works using electric and gas power. Learn how energy is managed, how regenerative braking works, and why it's so efficient.

## How Does The Toyota Corolla Hybrid Work

With this technology, every time you apply the brakes or slow the vehicle, the system converts kinetic energy into electrical energy that's stored in the battery for later use.



## [How Does The Toyota Chr Hybrid Work](#)

Tim Dickson, a motoring journalist, drives a Corolla Hybrid in this article to learn more about the experience of operating a Toyota hybrid. At this link, you can get further general advice, many ...



## How Does Regenerative Braking in Hybrid Cars ...

Learn how hybrids and all-electric vehicles create their own power for battery recharging through a process known as regenerative braking.



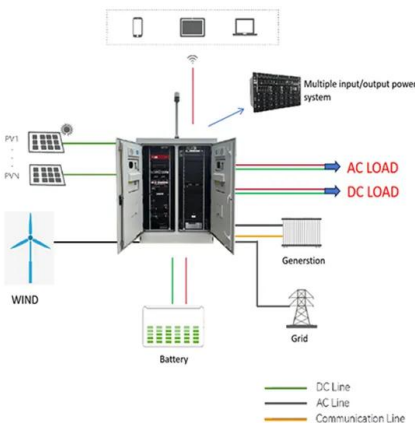
### How Toyota Hybrids Work

How Toyota Hybrids Work The Power of a Toyota Hybrid: Only Toyota hybrid technology can offer cleaner emissions, increased fuel efficiency, and surprising power. Meet the Toyota hybrid ...



### Hybrid Electric

Hybrid electric vehicles use two separate sources of power - a petrol engine and an electric motor. They are more fuel-efficient than conventional vehicles, yet do not require plugging in to charge as the engine charges ...

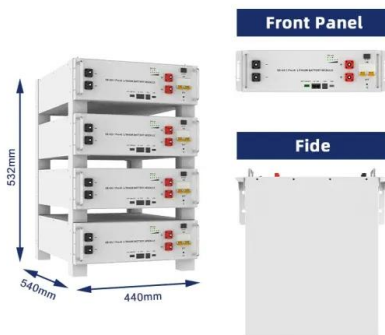


### COROLLA CROSS

Where Power Meets Efficiency Introducing the all-new Toyota Corolla Cross Hybrid -- where bold capability meets refined hybrid performance. Powered by Toyota's self-charging full hybrid ...

## Hybrid energy storage system and management strategy for motor ...

Unlike other hybrid energy systems that focus on energy management itself, our control scheme prioritizes the actual operational performance of the motor. In the absence of ...



## How Does a Toyota Hybrid Charge? Unveiling the Secrets of Self ...

The more you brake or decelerate, the more energy is recovered. How long does it take for a Toyota hybrid to fully charge its battery through normal driving? It's important ...



## 2025 Corolla

For Genuine Toyota Accessories purchased after the new vehicle purchase the coverage is 12 months, regardless of mileage, from the date the accessory was installed on the vehicle, or the ...

## Toyota C-HR Hybrid Working Explained: How Does It Work?

The Toyota C-HR Hybrid has carved a niche for itself as a stylish and fuel-efficient crossover. But behind its striking design lies a sophisticated hybrid system that's responsible ...



## How Does the Honda Two-Motor Hybrid ...

Core System Components - Find the best Honda deals! Despite its constant evolution, the Honda two-motor hybrid system is comprised of five core components across all ...



## How Does the Toyota Hybrid System Work? A Deep Dive into ...

When the driver applies the brakes, the electric motor (MG2) acts as a generator, converting the vehicle's kinetic energy into electrical energy. This electrical energy is then ...

## Toyota Corolla Hybrid: Can You Plug It In for Enhanced Efficiency?

The Corolla Hybrid employs what's known as a "series-parallel hybrid" system. In this configuration, the electric motor and the gasoline engine can work independently or in ...





## What is the Toyota Corolla Cross Hybrid? Is it Right for You?

A Hybrid Heart At its core, the Corolla Cross Hybrid boasts a sophisticated hybrid powertrain. It combines a gasoline engine with electric motors to deliver impressive fuel ...

### How Does Toyota Hybrid Work

How Does Toyota Hybrid Work? Toyota hybrids utilize a combination of a gasoline engine and an electric motor to optimize fuel efficiency and reduce emissions. The system, known as the Hybrid Synergy Drive, allows the ...



## How Does Toyota Hybrid System Work? , Electrified Powertrains ...

Toyota helped start the electrification revolution in 1997 when it introduced the hybrid powertrain and proved its viability for use in passenger vehicles. L

## Contact Us

---

For catalog requests, pricing, or partnerships, please visit:  
<https://bialydom.kolobrzeg.pl>