

## European Solar Energy Storage

# How does solar energy get into electrical line

**Parallel** (Parallel operation up to 6 unit (only with battery connected))



**AC input wires**



**AC output wires**



## Overview

---

Solar technologies convert sunlight into electrical energy either through photovoltaic (PV) panels or through mirrors that concentrate solar radiation. This energy can be used to generate electricity or be stored in batteries or thermal storage.

Solar technologies convert sunlight into electrical energy either through photovoltaic (PV) panels or through mirrors that concentrate solar radiation. This energy can be used to generate electricity or be stored in batteries or thermal storage.

There are two basic approaches to connecting a grid-tied solar panel system, as shown in the wiring diagrams below. The most common is a "LOAD SIDE" connection, made AFTER the main breaker. The alternative is a "LINE OR SUPPLY-SIDE" connection made BEFORE the main breaker. This type of.

All solar farms connect to a specific point on the electrical grid, the vast network of wires that connects every power generation plant to every home and business that consumes power. That point is called the "point of interconnection," or POI. The POI is different for utility-scale versus.

Solar technologies convert sunlight into electrical energy either through photovoltaic (PV) panels or through mirrors that concentrate solar radiation. This energy can be used to generate electricity or be stored in batteries or thermal storage. Below, you can find resources and information on the.

When solar power feeds back into the grid, it's like this: inverters do their magic, turning DC electricity from solar panels into AC electricity. This switcheroo allows any extra power to smoothly blend into the grid, cutting down on non-renewable energy usage and boosting overall grid stability.

Electricity flows back into the grid from solar panels through an inverter, which converts the direct current (DC) electricity generated by the panels into alternating current (AC) electricity compatible with the electrical grid. A bi-directional meter is installed to measure the flow of.

Power plants generate electricity using various sources such as gas, coal, wind, or solar. The grid is a large network that includes power stations, transformers and transmission lines. This network transports electricity from power plants to homes, offices, schools, factories, and anywhere else.

## How does solar energy get into electrical line

---



### How Does a Solar Farm Connect to the Grid?

All solar farms connect to a specific point on the electrical grid, the vast network of wires that connects every power generation plant to every home and business that consumes power.

### How Does a Solar Farm Connect to the Power Grid?

The first step in connecting a solar farm to the power grid is through the use of inverters, which convert solar energy into usable power that can be used by the power grid. Once the electricity has been converted, it is ...



### How Does Solar Work?

How Does Solar Work? The amount of sunlight that strikes the earth's surface in an hour and a half is enough to handle the entire world's energy consumption for a full year. Solar technologies convert sunlight into electrical energy either through photovoltaic (PV) panels or through mirrors that concentrate solar radiation.

### How is Solar Energy Converted to Electricity?

The photovoltaic effect is what allows sunlight to

be captured and converted into electrical energy. The phenomenon was discovered by French physicist Edmond Becquerel in 1839 when he was experimenting in his father's laboratory with platinum electrodes in an electrolyte solution.



## How Does Solar Work?

How Does Solar Work? The amount of sunlight that strikes the earth's surface in an hour and a half is enough to handle the entire world's energy consumption for a full year. Solar technologies convert sunlight into electrical energy either through photovoltaic (PV) panels or through ...



## How Does a Solar Farm Connect to the Grid?

All solar farms connect to a specific point on the electrical grid, the vast network of wires that connects every power generation plant to every home and business that consumes power.



### Lithium Solar Generator: \$150

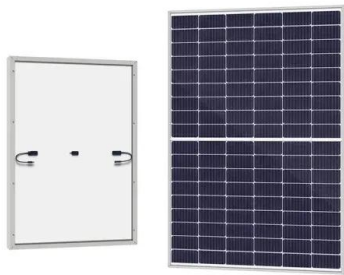


## How Does Electricity Flow Back into the Grid?

Understanding how electricity flows back into the grid is essential for solar panel owners as solar power gains popularity. In this comprehensive article, we will delve into the intricacies of the two-way flow of electricity between solar panels ...

## How Solar Panels Get Connected to the Grid: The Utility

A guide to solar interconnection, including timeline and cost, what happens during the interconnection process, and how to get Permission To Operate (PTO).



## How do solar power lines get to your home? , NenPower

Initially, sunlight is harnessed through solar panels, transitioning into electricity via inverters, then traveling through transmission lines and local grids into households.

## Solar Power Grid Connection Explained

Learn how solar power is connected to the electrical grid, how it works, and how net metering benefits homeowners. Discover the role of inverters and grid stability.



## How Does Solar Power Feed Back Into The Grid

By converting the DC power generated by solar panels into AC electricity, inverters facilitate the smooth and safe feed-in of solar energy into the grid. The synchronization of voltage and frequency by inverters is crucial for maintaining

...



## How Does Electricity Flow Back into the Grid?

Understanding how electricity flows back into the grid is essential for solar panel owners as solar power gains popularity. In this comprehensive article, we will delve into the intricacies of the two-way flow of electricity between solar panels and the grid.



## How Solar Panels Convert Sunlight into Electricity?

Find out how solar panels convert Sunlight into electricity. Understand the science behind it and see how you can benefit from solar energy now.

## How to connect a PV solar system to the utility grid

The purpose of this article is to give you a basic understanding of the concepts and rules for connecting a solar panel system to the utility grid and the household electrical box or meter.



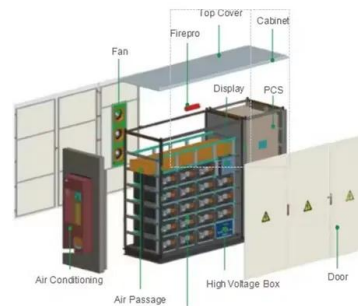


## How does solar work?

The energy is distributed through wires to your neighborhood and then into your home's main electrical service panel, which distributes it to various circuits in your home to power your lights, appliances, and more.

## Solar Interconnection: How Solar Farms Connect to ...

Solar interconnection is critical for commercial solar projects to connect to the power grid and earn compensation for electricity generated from distributed generation. Without utility compensation, most commercial solar ...



## How Do Solar Panels Feed Back into the Grid? A ...

Understanding the Concept of Grid-Connected Energy Solar panels feed back into the grid through net metering. When a solar panel system produces more energy than it uses, the excess energy flows back into the grid. ...



## The Science Behind Solar Panels: How They Convert Sunlight into Electricity

Learn about The Science Behind Solar Panels: How They Convert Sunlight into Electricity and how it impacts your solar energy choices. Distributive Solar provides in-depth education insights to help you make informed decisions

about solar energy.



## Contact Us

---

For catalog requests, pricing, or partnerships, please visit:  
<https://bialydom.kolobrzeg.pl>