

European Solar Energy Storage

Heard and McDonald Islands liebherr energiespeicher



Overview

The United Kingdom formally established its claim to Heard Island in 1910, marked by the raising of the Union Flag and the erection of a beacon by Captain Evensen, master of the Mangoro. Effective government, administration and control of Heard Island and the McDonald Islands was transferred to the Australian government on 26 December 1947 at the commencement of the first .

Heard Island and McDonald Islands (HIMI) in 1947. In 1997, the population was 1600, with 1000 people and 3700 people. 80% of the population is .

Heard and McDonald Islands liebherr energiespeicher

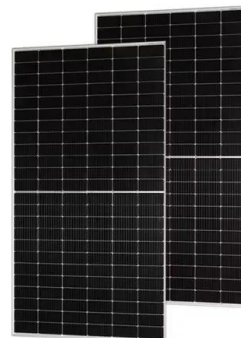


(PDF) Heard Island and the McDonald Islands: A window into ...

McDonald Island is much smaller (2.5 km²), about 100 000 years old and totally ice-free, and is predominantly composed of phonolitic rocks. 9, 10 During the campaign, signs of volcanic activity

[?????????:????????,???? ...](#)

????????(?:Heard Island and McDonald Islands,?:HIMI),????????,1947????????,1997????????(????????)?



Territorio de las Islas Heard y McDonald

Las Islas Heard y McDonald son un conjunto de islas deshabitadas que forman un territorio externo de Australia desde 1947, situadas en el océano Índico.. La isla Heard es montañosa, dominada por el pico Mawson, un volcán de 2745 ...

[Sales and service partners](#)

The Liebherr Group maintains a worldwide network of sales and service partners.

Depending on the region and product area, the responsibility lies with. Group. Group. About Liebherr. Products. Magazine. News. Other product segments. Career. Contact. United Kingdom of Great Britain and Northern Ireland (en) Group



???????????

???????????(?: Heard Island and McDonald Islands,?:HIMI),???????????,1947??????????
 ?????,1997????????????(?????????)? ??????1600?????
 ???;????????????1000????????????,?????3700?????

Liduro Energiespeicher

Liduro Energiespeicher - LES 200: Die Energiespeichersysteme verfügen über durchdachte Schutzkonzepte: Im Falle einer Störung trennt eine Einheit mit Sicherungen und Schaltkontakten den Speicher vom Stromnetz. Das Gehäuse des LES 200 vereint Nutzen und Design: Staub und Wasser stellen kein Problem dar. Die Anschlusseinheit der Stromkabel und die ...



Deye inverters and Deye batteries are more compatible.

Ilha Heard e Ilhas McDonald - Wikipédia, a enciclopédia livre

A Ilha Heard e as Ilhas McDonald (nome oficial: Território das Ilhas Heard e McDonald), [1] [2] [3] é um território externo australiano que compreende um grupo vulcânico de ilhas antárticas inóspitas e desabitadas, localizadas no oceano Índico, a cerca de dois terços do caminho

de Madagascar para a Antártida. A área total do grupo é de 372 km² e tem 101,9 km de litoral.



1075KWHH ESS

Heard and McDonald Islands, Australia , SpringerLink

Heard Island is 43 km long and 21 km wide. McDonald Islands are a group of uninhabited rocky islets, 40 km west of Heard Island (Encyclopaedia Britannica 2006). Heard Island has approximately 362.5 km² of area and the McDonald Island, 2.6 km². The site includes the adjacent offshore rocks and shoals and all territorial waters to a distance of 12 nautical ...



Sales and service partners

The Liebherr Group maintains a worldwide network of sales and service partners. Depending on the region and product area, the responsibility lies with. Group. Group. About Liebherr. Products. Magazine. News. Other product segments. Career. Contact. United States of America (en) Group About Liebherr. Services. Sales and service partners.

??o Heard và qu?n ??o McDonald - Wikipedia ti?ng Vi?t

??o Heard và qu?n ??o McDonald (vi?t t?t là HIMI [1]) là m?t qu?n ??o c?n c?i không ng??i ? n?m ? Nam ??i D??ng, kho?ng hai ph?n ba kho?ng cách

t? Madagascar ??n châu Nam C?c, ho?c 7718 km
 t? phía nam Rajapur, Maharashtra.Nó là lãnh th?
 c?a Úc t? n?m 1947, và ch? ch?a hai núi l?a trong
 lãnh th? thu?c Úc



Lithium battery parameters



Everything you need to know about Australia's Heard and McDonald Islands

Big Ben has erupted several times over the past two decades. McDonald Island lies 43.5 kilometres due west of Heard Island, and is the major island in the McDonald Islands group. It is a mere 186 metres high and it too has an active volcano. The McDonald Islands are so volcanically active they have doubled in area since 1980.

Heard Island and McDonald Islands facts for kids

The Territory of Heard Island and McDonald Islands (HIMI) is an Australian external territory comprising a volcanic group of mostly barren Antarctic islands, about two-thirds of the way from Madagascar to Antarctica.The group's overall size is 372 km² (144 sq mi) in area and it has 101.9 km (63 mi) of coastline. Discovered in the mid-19th century, the islands lie on ...



????(????????????) ??

????????(?:Heard Island and McDonald Islands,?:HIMI),????????,1947????????,1997???? ????? (????????)?HIMI???1600????????

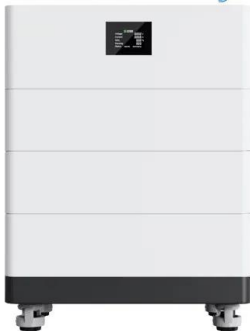


??????????

??????????(?: Heard Island and McDonald Islands,?: HIMI),??????????,1947??????
 ????,1997????????????(?????????)? ??????1600?????
 ???;????????????1000??????????,?????3700????????



High Voltage Solar Battery



Heard Island and McDonald Islands

Heard Island and McDonald Islands Heard Island and McDonald Islands are uninhabited, barren, Subantarctic islands in the Southern Ocean, far due south of India and roughly 400 km southeast of Kerguelen of the French Southern and Antarctic Lands.

Heard

Satellitbild av sydspetsen av Heard Island. Kap Arkona ses på vänster sida av bilden, med Lied Glacier strax ovanför och Gotley Glacier strax nedanför. Big Ben Volcano och Mawson Peak ses längst ned till höger på bilden. Heard- och McDonaldöarna, Heard and McDonald Islands, är en obebodd australisk ögrupp i södra Indiska oceanen.





Isole Heard e McDonald

L'isola Heard e le isole McDonald sono isole disabitate che si trovano nell'Oceano Antartico, a circa due terzi di distanza tra il Madagascar e l'Antartide. Esse costituiscono un territorio esterno australiano dal 1947 e contengono i due soli vulcani attivi presenti sul territorio australiano, uno dei quali (Mawson Peak) è anche la montagna australiana più elevata, con 2.745 metri.

Heard en McDonaldeilanden

De Heard en McDonaldeilanden (Engels: Heard Island and McDonald Islands (HIMI)) zijn een onbewoonde onherbergzame subantartische eilandengroep in het zuiden van de Indische Oceaan op de breedtegraad van Vuurland en op dezelfde lengtegraad als Mumbai. Ze liggen op 1700 km van Antarctica en op 4100 km zuidwestelijk van Perth eilanden vallen onder de

...



Heard and McDonald Islands , World Heritage Outlook

Heard Island and McDonald Islands are located in the Southern Ocean, approximately 1,700 km from the Antarctic continent and 4,100 km south-west of Perth. As the only volcanically active subantarctic islands they 'open a window into the earth', thus providing the opportunity to observe ongoing geomorphic processes and glacial dynamics.

Heard and McDonald Islands

Heard Island and McDonald Islands are located in the Southern Ocean, approximately 1,700 km

from the Antarctic continent and 4,100 km south-west of Perth. As the only volcanically active subantarctic islands they 'open a window into the earth', thus providing the opportunity to observe ongoing geomorphic



Heard and Mcdonald Islands , Mad Traveller

Heard and McDonald Islands: A Comprehensive Guide for Tourists Table of Contents Introduction Geography and History 2.1 Heard Island 2.2 McDonald Islands Climate and Wildlife Travel Information 4.1 How to Get There 4.2 When to Visit 4.3 What to Pack Things to Do and See Safety and Regulations Tips for Responsible Travel Useful Resources 1. Introduction ...

Heard and Mcdonald Islands

HEARD AND MCDONALD ISLANDS AUSTRALIA Heard Island and the McDonald Islands are in the Southern Ocean, approximately 4,100 km south-west of Perth and 1,700 km from the Antarctic continent. Their distinctive conservation value is as one of the world's rare pristine island ecosystems which have virtually no ...



Wyspy Heard i McDonalda - Wikipedia, wolna encyklopedia

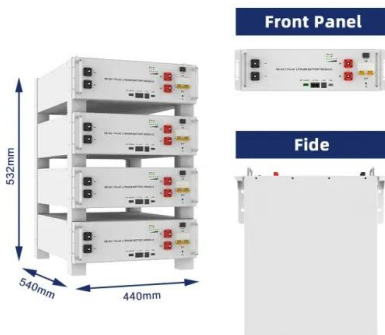
Wyspy le?? w pasie wyj?cych pi??dziesi?tek i s? bardzo oddalone od kontynentów: od Afryki dzieli je 4700 km, od Australii 4000 km, a od Antarktydy ok. 1000 km. Najbli?szym l?dem s? francuskie Wyspy Kerguelena, 450 km na



północny zachód. Główna Wyspa Heard jest bardzo górzysta i nieogracana, jej największy szczyt tworzy masyw Big Ben z najwyższym szczytem ...

??????????

??????????(?: Heard Island and McDonald Islands, HIIMI), ??????????, 1947????????????, 1997????????????(?????????)?????????1600?????????;????????????1000????????????,????????3700????????,????????80%????????,????????? ...



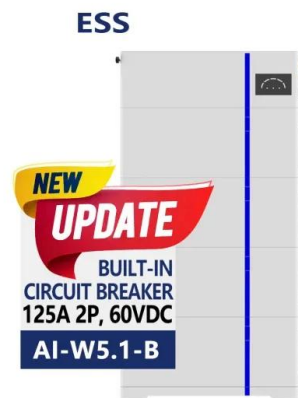
Territorio de las Islas Heard y McDonald

Las Islas Heard y McDonald son un conjunto de islas deshabitadas que forman un territorio externo de Australia desde 1947, situadas en el océano Índico. La isla Heard es montañosa, dominada por el pico Mawson, un volcán de 2745 m de altura. Con esta altura, el pico Mawson se erige como la montaña más alta de Australia vecina, la isla McDonald es pequeña y rocosa.

Heard Island and McDonald Islands - Travel guide at Wikivoyage

Heard Island and McDonald Islands are uninhabited, barren, Subantarctic islands in the Southern Ocean, far due south of India and roughly 400 km southeast of Kerguelen of the

French Southern and Antarctic Lands. The islands are administered by Australia and listed as a UNESCO World Heritage site. Although it's administered by Australia, the islands are approximately 4,000 ...



(PDF) Heard Island and the McDonald Islands: A ...

McDonald Island is much smaller (2.5 km²), about 100 000 years old and totally ice-free, and is predominantly composed of phonolitic rocks. 9, 10 During the campaign, signs of volcanic activity



Heard and McDonald Islands

This 3 days itinerary is the perfect guide to the best things to see in Heard and McDonald Islands. It includes day-by-day activities, travel tips, and the top places to visit. Day 1: Arrival and Initial Exploration. Morning. Arrive at Heard Island via expedition vessel, typically from ...



Heard? v ostrov a McDonaldovy ostrovy

Heard? v ostrov nikdo nenav? tivil a? do poloviny 50. let 19. století. Pravd? podobn? jej jako první spat? il britský lovec tule?? Peter Kemp dne 27. listopadu 1833. Kemp cestoval lodí Magnet z Kerguelen? do Antarktidy a údajn? jej zanesl do námo? níh map.. 25. listopadu 1853 ostrov uvid? l americký lovec tule?? a kapitán obchodní



iodi Oriental John Heard p?i cest? z

Heard Island and McDonald Islands

Heard Island and McDonald Islands in the Southern Ocean A map of Heard Island and McDonald Islands. Heard Island, by far the largest of the group, is a 368-square-kilometre (142 sq mi) mountainous island covered by 41 glaciers [21] (the island is 80% covered with ice [1]) and dominated by the Big Ben massif has a maximum elevation of 2,745 metres (9,006 ft) at

...



Contact Us

For catalog requests, pricing, or partnerships, please visit:
<https://bialydom.kolobrzeg.pl>