

European Solar Energy Storage

Flywheel energy storage area



Overview

First-generation flywheel energy-storage systems use a large steel flywheel rotating on mechanical bearings. Newer systems use carbon-fiber composite rotors that have a higher tensile strength than steel and can store much more energy for the same mass.

Flywheel energy storage (FES) works by accelerating a rotor to a very high speed and maintaining the energy in the system as . When energy is extracted from the system, the flywheel's rotational.

A typical system consists of a flywheel supported by connected to a . The flywheel and sometimes.

TransportationAutomotiveIn the 1950s, flywheel-powered buses, known as .

- • • - Form of power supply
- - High-capacity electrochemical capacitor .

GeneralCompared with other ways to store electricity, FES systems have long lifetimes (lasting decades).

Flywheels are not as adversely affected by temperature changes, can operate at a much wider temperature range, and are not subject to many of the common failures of chemical . They are also less potentially damaging to the environment, being.

- Beacon Power Applies for DOE Grants to Fund up to 50% of Two 20 MW Energy Storage Plants, Sep. 1, 2009
- Sheahen.

Flywheel technology is a sophisticated energy storage system that uses a spinning wheel to store mechanical energy as rotational energy. This system ensures high energy output and efficient recovery. With forces that help keep the flywheel stable, it can maintain efficiency.Are flywheel energy storage systems environmentally friendly?

Flywheel energy storage systems (FESS) are considered environmentally friendly short-term energy storage solutions due to their capacity for rapid and efficient energy storage and release, high power density, and long-term lifespan. These attributes make FESS suitable for integration into power

systems in a wide range of applications.

What is a flywheel energy storage unit?

A flywheel energy storage unit is a mechanical system designed to store and release energy efficiently. It consists of a high-momentum flywheel, precision bearings, a vacuum or low-pressure enclosure to minimize energy losses due to friction and air resistance, a motor/generator for energy conversion, and a sophisticated control system.

How does Flywheel energy storage work?

Flywheel energy storage (FES) works by accelerating a rotor (flywheel) to a very high speed and maintaining the energy in the system as rotational energy.

Can flywheel energy storage system array improve power system performance?

Moreover, flywheel energy storage system array (FESA) is a potential and promising alternative to other forms of ESS in power system applications for improving power system efficiency, stability and security . However, control systems of PV-FESS, WT-FESS and FESA are crucial to guarantee the FESS performance.

How much energy does a flywheel store?

Indeed, the development of high strength, low-density carbon fiber composites (CFCs) in the 1970s generated renewed interest in flywheel energy storage. Based on design strengths typically used in commercial flywheels, σ_{max} / ρ is around 600 kNm/kg for CFC, whereas for wrought flywheel steels, it is around 75 kNm/kg.

What is the difference between flywheel and battery energy storage system?

Compared to battery energy storage system, flywheel excels in providing rapid response times, making them highly effective in managing sudden frequency fluctuations, while battery energy storage system, with its ability to store large amounts of energy, offers sustained response, maintaining stability

Flywheel energy storage area

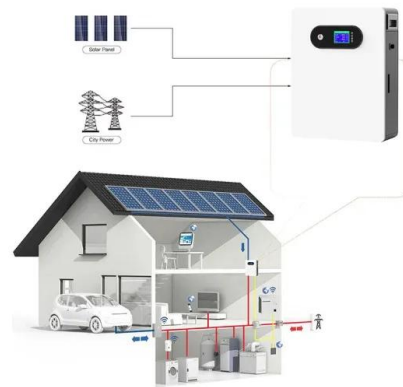


Flywheel Energy Storage: A High-Efficiency Solution

Let's dive into the exciting benefits of flywheel energy storage! We will explore its advantages, applications across various industries, and a comparative analysis with other storage methods.

Flywheel energy storage

First-generation flywheel energy-storage systems use a large steel flywheel rotating on mechanical bearings. Newer systems use carbon-fiber composite rotors that have a higher tensile strength than steel and can store much more energy for the same mass.



Flywheel Energy Storage Systems , Electricity Storage Units

A flywheel is a mechanical device that stores energy by spinning a rotor at very high speeds. The basic concept involves converting electrical energy into rotational energy, storing it, and then converting it back into electrical energy when needed.

Flywheel Energy Storage: A Comprehensive Guide

Discover the benefits and applications of flywheel energy storage in modern energy systems, including its role in grid stabilization and renewable energy integration.



Applications of flywheel energy storage system on load frequency

Flywheel energy storage systems (FESS) are considered environmentally friendly short-term energy storage solutions due to their capacity for rapid and efficient energy storage and release, high power density, and long-term lifespan.

The Status and Future of Flywheel Energy Storage

Flywheels, one of the earliest forms of energy storage, could play a significant role in the transformation of the electrical power system into one that is fully sustainable yet low cost.



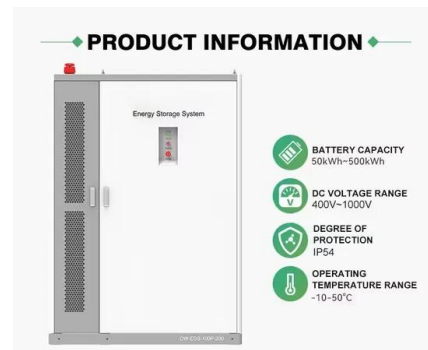
Flywheel Energy Storage

Flywheel energy storage is a form of mechanical energy storage that works by spinning a rotor (flywheel) at very high speeds. This stored energy can be quickly converted back to electricity when needed, providing a reliable and efficient ...



Flywheel Systems for Utility Scale Energy Storage

The kinetic energy storage system based on advanced flywheel technology from Amber Kinetics maintains full storage capacity throughout the product lifecycle, has no emissions, operates in a wide range of environmental conditions, and is fully recyclable at the end of life.



Flywheel Energy Storage

Flywheel energy storage is a form of mechanical energy storage that works by spinning a rotor (flywheel) at very high speeds. This stored energy can be quickly converted back to electricity when needed, providing a reliable and efficient way to manage power supply and demand.



A review of flywheel energy storage systems: state of the art ...

The existing energy storage systems use various technologies, including hydro-electricity, batteries, supercapacitors, thermal storage, energy storage flywheels,[2] and others. Pumped hydro has the largest deployment so far, but it is

limited by geographical locations.



Next-Generation Flywheel Energy Storage , ARPA-E

Flywheels store the energy created by turning an internal rotor at high speeds-slowing the rotor releases the energy back to the grid when needed. Beacon Power is redesigning the heart of the flywheel, eliminating the cumbersome hub and shaft typically found at its center.

Contact Us

For catalog requests, pricing, or partnerships, please visit:
<https://bialydom.kolobrzeg.pl>