

European Solar Energy Storage

Energy storage project fire accident



Overview

What happened at California's largest lithium-ion battery energy storage facility?

A fire at a California lithium-ion battery energy storage facility once described as the world's largest has burned for five days, prompting evacuation orders. The fire broke out on Wednesday at the 250MW Gateway Energy Storage facility owned by grid infrastructure developer LS Power in San Diego.

What are stationary energy storage failure incidents?

Note that the Stationary Energy Storage Failure Incidents table tracks both utility-scale and C&I system failures. It is instructive to compare the number of failure incidents over time against the deployment of BESS. The graph to the right looks at the failure rate per cumulative deployed capacity, up to 12/31/2024.

What are other storage failure incidents?

Other Storage Failure Incidents - this table tracks incidents that do not fit the criteria for the first table. This could include failures involving the manufacturing, transportation, storage, and recycling of energy storage. Residential energy storage system failures are not currently tracked.

What are the different types of energy storage failure incidents?

Stationary Energy Storage Failure Incidents - this table tracks utility-scale and commercial and industrial (C&I) failures. Other Storage Failure Incidents - this table tracks incidents that do not fit the criteria for the first table. This could include failures involving the manufacturing, transportation, storage, and recycling of energy storage.

What happened at Gateway Energy Storage in San Diego?

The fire broke out on Wednesday at the 250MW Gateway Energy Storage facility owned by grid infrastructure developer LS Power in San Diego. A fire

crew managed to get the blaze at the 16,000-square foot facility under control after around 24 hours, lifting evacuation orders that were made.

Why did a large-scale energy storage system fire happen?

The fire, triggered by a thermal runaway event, rapidly spread through the facility, causing extensive damage before it was brought under control. Although no injuries were reported, the incident highlighted the potential hazards associated with large-scale energy storage systems.

Energy storage project fire accident



Understanding the US Energy Storage Fire Incident: Safety

...

Learn about the recent energy storage fire incident in the US, its implications for safety protocols, and how advancements in technology can prevent future occurrences.

Fire at the largest BESS in the world led to evacuation ...

On September 4, 2021, a malfunction occurred in the Phase I system of Vistra Corporation's Battery Energy Storage Systems (BESS) at the Moss Landing Power Plant, damaging approximately 7% of the battery modules.



Fire burns for five days at huge lithium-ion energy storage facility

A fire at a California lithium-ion battery energy storage facility once described as the world's largest has burned for five days, prompting evacuation orders. The fire broke out on Wednesday at the 250MW Gateway Energy Storage facility owned by grid infrastructure developer LS Power in San Diego.

Report: Four Firefighters Injured In Lithium-Ion Battery

Energy Storage

On April 19, 2019, one male career Fire Captain, one male career Fire Engineer, and two male career Firefighters received serious injuries as a result of cascading thermal runaway within a 2.16 MWh lithium-ion battery energy storage system (ESS) that led to a deflagration event.



Fire burns for five days at huge lithium-ion energy ...

A fire at a California lithium-ion battery energy storage facility once described as the world's largest has burned for five days, prompting evacuation orders. The fire broke out on Wednesday at the 250MW Gateway ...

Fire at the largest BESS in the world led to evacuation of 1500

On September 4, 2021, a malfunction occurred in the Phase I system of Vistra Corporation's Battery Energy Storage Systems (BESS) at the Moss Landing Power Plant, damaging approximately 7% of the battery modules.



Five-Day Battle: Blaze Engulfs Major Lithium-Ion Energy Facility

A recent fire at the Gateway Energy Storage facility in San Diego, once hailed as the world's largest lithium-ion battery energy storage project, has reignited concerns over the safety of this critical clean energy technology.



[BESS Failure Incident Database](#)

This table tracks other energy storage failure incidents for scenarios that do not fit the criteria of the table above. This could include energy storage failures in settings like electric transportation, recycling, manufacturing, etc.

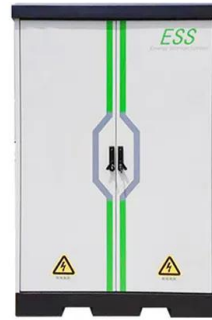


A battery plant fire in California started during a boom for energy storage

AUSTIN, Texas (AP) -- A fire at one of the world's largest battery plants in Northern California contained tens of thousands of lithium batteries that store power from renewable energy and have become a growing electricity source.

Recent California Energy Storage Battery Fire Draws Renewed ...

A recent fire at a battery storage facility in California is bringing fresh attention to safety issues tied to energy storage as the technology grows in deployment across the U.S.



Five-Day Battle: Blaze Engulfs Major Lithium-Ion ...

A recent fire at the Gateway Energy Storage facility in San Diego, once hailed as the world's largest lithium-ion battery energy storage project, has reignited concerns over the safety of this critical clean energy ...



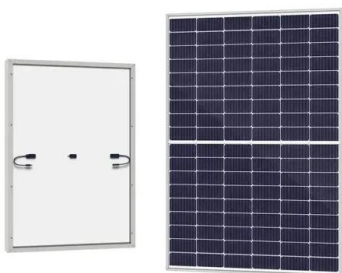
Energy Storage Station Fire Accidents: Root Causes and Safety

In February 2025 alone, three major energy storage station fire accidents occurred across the U.S., Germany, and the UK - all involving lithium-ion battery systems.



Lithium-ion energy storage battery explosion incidents

Several large-scale lithium-ion energy storage battery fire incidents have involved explosions. The large explosion incidents, in which battery system enclosures are damaged, are due to the deflagration of accumulated flammable gases generated during cell thermal runaways within one or more modules.



Contact Us

For catalog requests, pricing, or partnerships, please visit:
<https://bialydom.kolobrzeg.pl>