

European Solar Energy Storage

Energy storage glass fiber



Overview

What is the energy consumption per tonne of glass fibre?

to less than 3% of overall glass production. Unit energy consumption per tonne of glass fibre in Europe is 2 MWh of which around 80% is attributable to the sub-process of melting and fining. This guideline comprises all process steps performed for the production of glass fibres, including batch preparation (O₂), Model Based Predictive.

How does glass fibre recycling affect energy consumption?

Key Facts of Measure - Glass Fibre Recycling Roughly, it can be assumed that every 10% increase in the recycled glass share results in a 2.5-3% reduction in furnace energy consumption. (Scalet Bianca Maria, 2013). Applying the values from Table 4, which assume an overall energy consumption of about 1500 kWh/t_{glass}, this would mean a reduction.

Do PI Fibers improve high-temperature energy storage performance?

The test results show that PI fibers can greatly increase the high-temperature breakdown strength and thus improve the high-temperature energy storage performance of the composite dielectric. 5 vol% PI@PEI composite has the best energy storage characteristics, but its high-temperature energy storage efficiency is relatively low.

How are glass fibres made?

glass fibres, three types of processes exist: Nozzle drawing process: This process is used for continuous fibres that are used in reinforcing printed circuit boards and plastics or as an additive for textile fabrics. In the process, the molten glass is fed from the glass tank into a tank made of platinum and rhodium. There are nozzles at the bottom.

Does glass fibre produce CO₂?

of CO₂ emissions in industrial production²⁰. The glass fibre sector – as a sub-

sector of glass production – is among the most energy-intensive sectors and a sector with extremely high temperature process heat requirements. Thus, only addressing energy efficiency optimisation of the process.

What reforms are needed in the glass fibre industry?

Comprehensive reforms in industries are needed. The glass fibre industry is an energy-intensive sector, its unit energy consumption ranging between 7.2 to 12.6 GJ per tonne of glass product. A variety of measures – from glass recycling to using green hydrogen, heat recovery and electrification – are available for reducing fossil fuel consumption.

Energy storage glass fiber

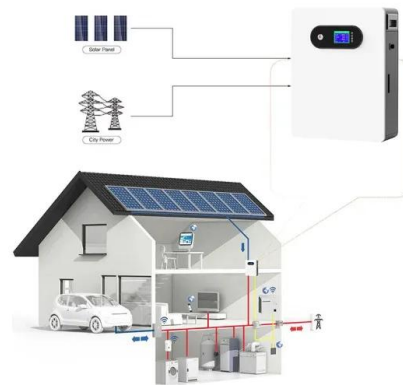


High-Strength Poly(ethylene oxide) Composite Electrolyte ...

However, a structural electrolyte suitable for structural energy devices is rarely exploited. Here, a structural lithium battery composed of a fiber-reinforced structural electrolyte and a structural cathode is demonstrated.

Energy Efficiency in the Glass Fiber Industry

The following chapter provides an introduction to overall production processes in the glass fibre sector and their relevance to overall energy consumption as well as a statistical overview of production and energy consumption re-lated figures in Europe.



High-tension, vertical filament winding enables affordable flywheel

French startup Energiestro's prototype solar energy flywheel-based storage system aims to reduce costs with glass fiber composites and prestressed concrete.

Achieving Hydrogen Storage Goals through High-Strength

...

Develop a new glass fiber with strength exceeding Toray T-700 carbon fiber at less than half its cost. Demonstrate a novel glass fiber manufacturing process. Conduct composite validation laboratory tests to determine the safety factor for the tank ...



What is glass energy storage? , NenPower

Glass energy storage is a cutting-edge technology designed to store and manage electrical energy effectively. It employs specialized glass materials that enable the capture and release of energy with remarkable ...



Smart glass fiber hydrogen tank for high pressure: design and ...

This study presents the experimental design and performance evaluation of a cost-effective Type IV hydrogen storage tank reinforced with glass fiber/epoxy composite.



High-tension, vertical filament winding enables ...

French startup Energiestro's prototype solar energy flywheel-based storage system aims to reduce costs with glass fiber composites and prestressed concrete.

Enhanced High-Temperature Energy Storage ...

For example, polyetherimide has high-energy storage efficiency, but low breakdown strength at high temperatures. Polyimide has high corona resistance, but low high-temperature energy storage efficiency. In this work, combining the ...



High-Strength Poly(ethylene oxide) Composite ...

However, a structural electrolyte suitable for structural energy devices is rarely exploited. Here, a structural lithium battery composed of a fiber-reinforced structural electrolyte and a structural cathode is demonstrated.

Glass Fiber Paper Composites for Supercapacitor Utility: A Review

This reinforces the observation that glass fiber is a key enabler for the long-term reliability and robustness of supercapacitors, making them suitable for applications where frequent cycling



What is glass energy storage? , NenPower

Glass energy storage is a cutting-edge technology designed to store and manage electrical energy effectively. It employs specialized glass materials that enable the capture and release of energy with remarkable efficiency.



Enhanced High-Temperature Energy Storage Performance of All ...

For example, polyetherimide has high-energy storage efficiency, but low breakdown strength at high temperatures. Polyimide has high corona resistance, but low high-temperature energy storage efficiency. In this work, combining the advantages of two polymer, a novel high- Tg polymer fiber-reinforced microstructure is designed.



Smart fibers for energy conversion and storage

Herein, after a brief introduction on the history of smart and functional fibers, we review the current state of advanced functional fibers for their application in energy conversion and storage, focusing on nanogenerators, solar cells, supercapacitors and batteries.

Contact Us

For catalog requests, pricing, or partnerships, please visit:
<https://bialydom.kolobrzeg.pl>