

European Solar Energy Storage

Energy storage battery transportation requirements



Overview

In the past few months, Gard has received several queries on the safe carriage of battery energy storage systems (BESS) on ships. In this insight, we highlight some of the key risks, regulatory requirements, and recommendations for shipping such cargo.

In the past few months, Gard has received several queries on the safe carriage of battery energy storage systems (BESS) on ships. In this insight, we highlight some of the key risks, regulatory requirements, and recommendations for shipping such cargo.

In the past few months, Gard has received several queries on the safe carriage of battery energy storage systems (BESS) on ships. In this insight, we highlight some of the key risks, regulatory requirements, and recommendations for shipping such cargo. According to the International Energy Agency.

This paper reviews the international and key national (U.S., Europe, China, South Korea, and Japan) air, road, rail, and sea transportation requirements for lithium batteries. This review is needed because transportation regulations are not consistent across countries and national regulations are.

lements (cobalt, lead, lithium, nickel). These requirements will start to apply from August 18, 2024, with delegated acts and implementation acts replaceable by independent professionals. This requirement g and treatment facilities for bateries. These t light means of transport (LMT) bateries. Each.

The transportation of a Battery Energy Storage System (BESS) is one of the most important-but widely disregarded-steps for the completion of the project. Lithium-Ion Phosphate batteries (LFP) are designed to provide high amounts of power, but they can produce high amounts of heat that cause fires.

Although lithium batteries power many of our everyday devices, their transportation comes with a set of important rules and regulations. It's necessary to understand and apply these key transportation rules for lithium

batteries to guarantee safety and compliance. The first rule to note is.

For sea transportation, the IMDG Code is a crucial set of regulations. It classifies BESS as dangerous goods and provides guidelines on how to package, label, and stow them on ships. The code ensures that the batteries are properly secured to prevent movement during transit, which could lead to. What are DOT regulations for battery transport?

DOT regulations are aligned with IATA standards for battery transport, offering a consistent approach to safety. They cover different types of batteries including lithium-ion, lead-acid, nickel-metal hydride, among others. Each type has specific packaging, labelling, and handling requirements under DOT regulations.

Are battery energy storage systems safe aboard ships?

In recent months, Gard has received numerous inquiries about the safe transportation of battery energy storage systems (BESS) aboard ships. This article addresses some of the key risks, regulatory requirements, and recommendations for shipping such cargo.

What are the transportation rules for lithium batteries?

Personnel involved in the transportation of lithium batteries must receive specialized training on handling and safety procedures. This training guarantees they understand the potential risks and how to mitigate them effectively. The key transportation rules for lithium batteries are in place to protect us all.

What are the regulations for battery shipping by sea?

Another is the United Nations (UN), which has a series of recommendations for the transport of dangerous goods, including batteries. The International Maritime Dangerous Goods (IMDG) code also has a set of regulations for battery shipping by sea. Here's a quick rundown of what these regulations generally include:

Is there a need to consolidate standards & regulations for battery shipments?

There is definitely a need to consolidate norms and regulations. Furthermore, there is a need to consolidate safety testing requirements for battery shipments that not only cover cells, but the batteries themselves and the products (equipment, systems).

What are the labeling standards for transported batteries?

Labeling standards for transported batteries are an essential part of safety protocols. They inform handlers of the contents and potential hazards, aiding in the appropriate handling and storage during transport. In adhering to these regulations, we need to keep in mind a few key points: Each label must be durable, visible, and printed in English.

Energy storage battery transportation requirements



Shipping battery energy storage systems

In the past few months, Gard has received several queries on the safe carriage of battery energy storage systems (BESS) on ships. In this insight, we highlight some of the key risks, regulatory requirements, and recommendations for shipping such cargo.

Energy storage battery transport precautions?

To sum up, energy storage battery transportation is a complex and rigorous process that requires strict compliance with relevant regulations and standards to ensure transportation safety.



White Paper The Future of Transportation

The EU has adopted a new regulation on batteries and waste batteries (Regulation 2023/1542) that will replace the existing Battery Directive (2006/66/EC) and introduce new requirements for the sustainability, safety, labeling and information for all batteries.

Ensuring the Safe Transport of Battery Energy Storage Systems ...

In recent months, Gard has received numerous inquiries about the safe transportation of battery energy storage systems (BESS) aboard ships. This article addresses some of the key risks, regulatory requirements, and recommendations for shipping such cargo.



Shipping battery energy storage systems

In the past few months, Gard has received several queries on the safe carriage of battery energy storage systems (BESS) on ships. In this insight, we highlight ...

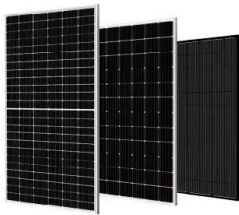
What are the safety regulations for transporting a Battery Energy

These regulations require carriers to have proper permits, training for drivers, and specific safety equipment on the vehicles. Similar regulations exist in other countries, ensuring that BESS is transported safely within their borders.



Ship Safety Standards

The EMSA Guidance on the Safety of Battery Energy Storage Systems (BESS) On-board Ships aims at supporting maritime administrations and the industry by promoting a uniform implementation of the essential safety requirements for batteries on-board of ships.



Ensuring the Safe Transport of Battery Energy ...

In recent months, Gard has received numerous inquiries about the safe transportation of battery energy storage systems (BESS) aboard ships. This article addresses some of the key risks, regulatory requirements, and ...



Transportation of Lithium Ion Batteries

Transportation of Lithium Ion Batteries Agenda: The background of lithium-ion transportation regulations. Which kinds of restrictions and regulations are in place today? What is necessary to ship batteries by AIR? What you and your organization should consider.

Safety Requirements for Transportation of Lithium Batteries

Sections 4-8 introduce lithium battery transportation regulations in the U.S., China, Europe, South Korea, and Japan, and discuss the differences between the national and international regulations.



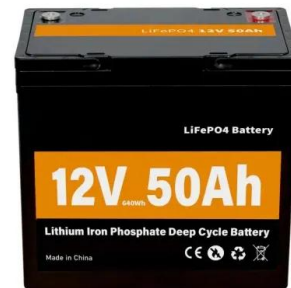


Shipping Commercial Battery Energy Storage Systems Safely

Battery test certification must be renewed for certain circumstances, such as the battery design or product design becomes changed before the final shipping process. The UN38.3 testing is ...

Shipping Commercial Battery Energy Storage Systems Safely

Battery transportation involves strict regulations. This guide explains the rules for safe and compliant battery shipping and handling.



Contact Us

For catalog requests, pricing, or partnerships, please visit:
<https://bialydom.kolobrzeg.pl>