

European Solar Energy Storage

Does solar energy move in food chain



Overview

Each ecosystem has its own unique food web and pattern of energy flow, but the fundamental principle remains the same: solar energy is captured by producers and then transferred to consumers and decomposers through the food chain, with a significant amount of energy lost at each.

Each ecosystem has its own unique food web and pattern of energy flow, but the fundamental principle remains the same: solar energy is captured by producers and then transferred to consumers and decomposers through the food chain, with a significant amount of energy lost at each.

Understanding how this solar energy journeys through a food chain is fundamental to grasping the intricate web of life and the crucial roles each organism plays. This article delves into the fascinating process of energy transfer, from capturing sunlight to fueling the largest predators, exploring.

Energy movement through a food chain describes the pathway of energy as it flows within an ecosystem. This linear sequence illustrates how energy and nutrients transfer from one organism to another when consumption occurs. Understanding this fundamental process reveals the interconnectedness of.

The primary source of energy for almost every ecosystem on Earth is the sun. Primary producers use energy from the sun to produce their own food in the form of glucose, and then primary producers are eaten by primary consumers who are in turn eaten by secondary consumers, and so on, so that energy.

Thus, energy flow through the food chain is essential for maintaining the ecological balance of an ecosystem. First trophic level: Producers (plants, algae, mosses, etc.); Second trophic level: Primary consumers (herbivores that eat producers); Third trophic level: Secondary consumers (carnivores).

Energy moves through ecosystems, often depicted as a food chain illustrating who eats whom. Understanding this energy transfer reveals the fundamental connections within the natural world. Nearly all energy that powers life on Earth originates from the sun. This solar energy is captured by certain.

The initial source of energy for almost every ecosystem on Earth is the sun: Solar energy is converted into biomass by primary producers and is then transferred between trophic levels from one consumer to the next up the food chain. Organisms are categorized into trophic levels based on how they. Why does energy flow through the food chain?

This is due to the laws of thermodynamics, which state that energy is neither created nor destroyed but converted into other forms, such as heat, during transfers. Thus, energy flow through the food chain is essential for maintaining the ecological balance of an ecosystem. First trophic level: Producers (plants, algae, mosses, etc.);.

Where does energy come from in a food chain?

At the heart of any food chain or food web lies the transfer of energy. This energy, primarily derived from the sun, fuels all life processes. The story begins with primary producers, also known as autotrophs. These organisms, mainly plants and algae, possess the remarkable ability to capture solar energy through a process called photosynthesis.

How do you show energy flow in a food chain?

The easiest way to demonstrate this energy flow is with a food chain. Each link in the chain represents a new trophic level, and the arrows show energy being passed along the chain. At the bottom of a food chain is always the primary producer.

How do primary producers use energy?

Primary producers use energy from the sun to produce their own food in the form of glucose, and then primary producers are eaten by primary consumers who are in turn eaten by secondary consumers, and so on, so that energy flows from one trophic level, or level of the food chain, to the next.

Why are food chains so short?

As energy moves up the food chain, it is lost as heat at each step along the way. This is why food chains are usually quite short, as there is not enough energy left to support another trophic level after four to six energy transfers. The energy flow in a food chain begins with the primary producers, which are usually plants.

How does energy move up trophic levels?

This means that as energy moves up the trophic levels, it is changed into forms that cannot be consumed by the next trophic level. The energy flow in a food chain typically starts with the primary producers, such as plants, algae, and mosses, which use photosynthesis to convert solar energy into chemical energy, storing it in the form of glucose.

Does solar energy move in food chain

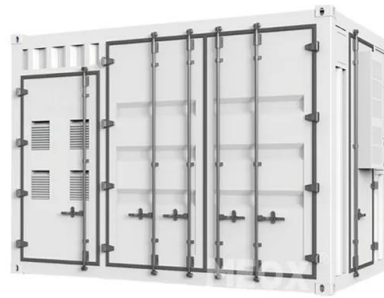


2.4 How Energy Flows - Photosynthesis, Trophic ...

A food chain is a linear sequence of organisms through which nutrients and energy pass as one organism eats another. The levels in the food chain are producers, primary consumers, higher-level consumers, and finally decomposers.

The Flow of Energy: Understanding Energy Movement in a Food Chain

Energy flows in a food chain from one trophic level to the next, with each level representing a different rank in the energy hierarchy. At the base, primary producers harness solar energy and ...



How Does Energy Move Through an Ecosystem?

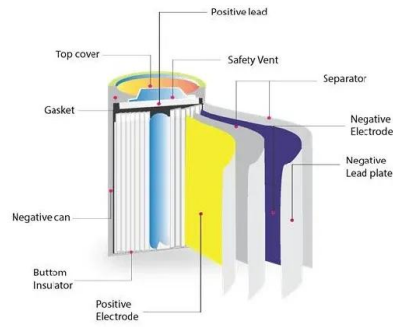
Food webs demonstrate the numerous pathways energy can take, providing greater stability and resilience to the ecosystem compared to simple chains. The Rules of ...

Energy flow (ecology)

A food pyramid and a corresponding food web, demonstrating some of the simpler patterns in a

food web A graphic representation of energy transfer between trophic layers in an ecosystem

...



What is Transferred in a Food Chain or Food Web? Unraveling the Energy

Primarily, energy and nutrients are transferred through food chains and food webs. Energy, initially captured from sunlight by producers (like plants) through photosynthesis, flows from ...



Energy Transfer in Ecosystems

Primary producers use energy from the sun to produce their own food in the form of glucose, and then primary producers are eaten by primary consumers who are in turn eaten by secondary consumers, and so on, so that ...



Energy Flow

This energy is stored in various organic products in the plants and passed on to the primary consumers in the food chain when the herbivores consume (primary consumers) the plants as food. Then conversion of chemical energy stored in ...



How Solar Energy Flows Through the Food Chain: A Deep Dive

Each ecosystem has its own unique food web and pattern of energy flow, but the fundamental principle remains the same: solar energy is captured by producers and then ...



Energy Flow and the 10 Percent Rule

The initial source of energy for almost every ecosystem on Earth is the sun: Solar energy is converted into biomass by primary producers and is then transferred between ...

How Energy Changes And Moves Through An Ecosystem?

Energy flows through the food chain or food web, starting with photosynthesis and ending when carnivores die and decompose, becoming food for plants and starting the cycle ...



What is Food Chain?

Life is a continuous cycle, and the way organisms obtain food follows a similar pattern. This cycle is captured in the food chain, where energy and nutrients move from one organism to another. From tiny plants to towering ...



How Does Energy Move Through a Food Chain?

The ultimate source of nearly all energy in a food chain originates from the sun. Organisms known as producers, such as plants, algae, and some bacteria, capture this solar ...



14: Energy in Ecosystems

An example of the concept of energy flow through trophic levels of a food chain. There are several different factors that control the primary productivity of energy and biomass flow. Energy flow is ...

Energy Flow and the 10 Percent Rule

On average only 10 percent of energy available at one trophic level is passed on to the next. This is known as the 10 percent rule, and it limits the number of trophic levels an ecosystem can support.





Energy Flow In Food Chains: Understanding The Dynamic Process

The energy flow in a food chain typically starts with the primary producers, such as plants, algae, and mosses, which use photosynthesis to convert solar energy into chemical ...

How Does Energy Flow Through The Ocean Ecosystem

Energy is the primary source of energy for most life on Earth, primarily from the sun. Photosynthesis allows plants and algae to capture sunlight and use it to power reactions ...



How Does Solar Energy Enter An Ecosystem

Solar energy is transformed into chemical energy during photosynthesis, primarily in the form of glucose, which serves as potential energy. This energy flows through ...

Energy Flow in Ecosystems: Pathways, Laws, and Examples

Overview of energy flow in ecosystems and its significance Energy flow is key to how ecosystems are built and how they work, allowing energy to move from one trophic level to another. This ...



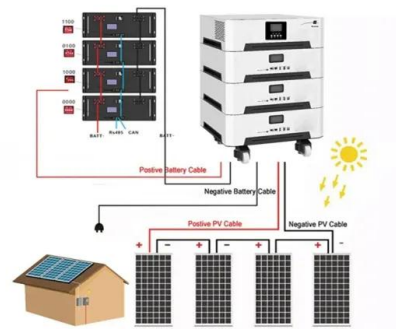
6.1.1.4: Food Chains and Food Webs

Energy is the ability to do work. Some overlapping examples are kinetic energy, heat energy, potential energy, and chemical energy. Energy flows through a food chain from producers to top-level ...



The Energy Ecosystem: How Power Flows in Nature

Energy ecosystems are networks that illustrate the flow of energy through nature, essential for sustaining life and maintaining ecological balance. We will explore how energy moves from sunlight to plants, then to ...

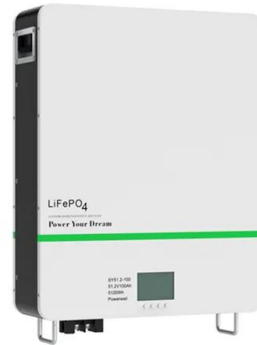


Energy Flow (Ecosystem): Definition, Process & Examples

Energy Flow Definition and Trophic Levels The definition of energy flow is the transfer of energy from the sun and up each subsequent level of the food chain in an ...

How Does Energy Flow Through a Food Chain?

Producers form the base of most food chains, transforming light energy into organic compounds like sugars. This chemical energy is stored within their tissues, making it ...



Energy Flow through Ecosystems - Environmental ...

After studying this chapter, you should be able to: List the levels of organization of living things in the environment Differentiate between food chains and food webs Describe how organisms acquire energy in a food web and in associated food ...

Understanding the Dynamics of a Food Chain

Understanding the basic components of a food chain is essential to grasp the full scope of ecological relationships. Trophic Levels Food chains consist of multiple trophic levels, ...



Energy Transfer in Ecosystems

Primary producers use energy from the sun to produce their own food in the form of glucose, and then primary producers are eaten by primary consumers who are in turn ...



Energy Flow and the 10 Percent Rule

The initial source of energy for almost every ecosystem on Earth is the sun: Solar energy is converted into biomass by primary producers and is then transferred between trophic levels from one consumer to the next ...



Contact Us

For catalog requests, pricing, or partnerships, please visit:
<https://bialydom.kolobrzeg.pl>