

## European Solar Energy Storage

# Does energy star portfolio manager track solar



## Overview

---

Portfolio Manager lets you to track two types of onsite green power: power generated from solar photovoltaic panels and power generated from wind turbines. These renewable sources of electricity are tracked with a unique “meter type.”.

Portfolio Manager lets you to track two types of onsite green power: power generated from solar photovoltaic panels and power generated from wind turbines. These renewable sources of electricity are tracked with a unique “meter type.”.

To benchmark, you will enter two meters: one to track how much onsite renewable electricity you use and export, and a second to track the electricity that you purchase from the grid. Because onsite renewable electricity generation is part of your building’s energy requirement, it must be tracked;.

If you only receive a net-metered bill from your utility and you cannot obtain the necessary values to properly enter onsite solar (as outlined in this FAQ), then we recommend you treat all electricity consumption as “grid electricity.” This means you will have at least 2 Electric Grid meters: one.

ENERGY STAR Portfolio Manager (ESPM) is a free tool managed by the U.S. EPA and Department of Energy (DOE) that enables real estate investors, owners, and managers to track, benchmark, and understand the energy and environmental performance of buildings in comparison to peers. Launched in 1999.

h a management tool and a metrics calculator. As a management tool, it can be used to evaluate whole building energy and water consumption, assess waste and materials management, track changes over time, track green power purchases, share and report data with others, create r e and inform your.

Get fact sheets, quick reference guides and other information about how the tool works. Browse or search our Frequently Asked Questions. Look up terms used throughout Portfolio Manager. Sign up for a session or view a recording

on a wide variety of topics. Send a question, a comment, or a.

A government -backed , voluntary program that helps businesses and individuals protect the environment through superior energy performance by providing energy-efficient solutions for homes, businesses, and institutions. The national symbol for environmental protection through energy efficiency. What is Energy Star portfolio manager?

ENERGY STAR Portfolio Manager (ESPM) is a free tool managed by the U.S. EPA and Department of Energy (DOE) that enables real estate investors, owners, and managers to track, benchmark, and understand the energy and environmental performance of buildings in comparison to peers.

How do I track onsite green power in portfolio manager?

There are two important principles followed in tracking onsite green power in Portfolio Manager: All energy use must be tracked to evaluate energy performance. You must track exactly how much renewable electricity you use, as well as how much electricity you obtain from the grid.

How do I connect my energy star portfolio manager account?

To begin the ENERGY STAR Portfolio Manager connection process, click the Connect to Portfolio Manager button. You will then be asked to accept the ENERGY STAR Portfolio Manager Connection Terms of Use. Click the checkbox to agree and click the Continue button. In a new browser tab, log in to your ENERGY STAR Portfolio Manager account.

Does portfolio manager have a tracking module for energy sources?

Portfolio Manager does not have specific tracking modules for these energy sources because it is not common or feasible to quantify their heat input. In these cases, you receive credit to the extent you lower your energy purchases. You also may buy RECs independent of your actual physical electricity.

How do I download my energy star property?

To download your building's current ENERGY STAR property: Log in to your ENERGY STAR Portfolio Manager account. In the Dashboard pane, click to open the property you wish to download. You will be taken to your property's Summary tab. Click the Download Property to Excel link on the bottom-right of the page.

What happens if my euds synchronize with Energy Star portfolio manager?

Once your profiles are synchronized between the EUDS and ENERGY STAR Portfolio Manager, any metrics errors present on your ENERGY STAR Portfolio Manager profile will also be pushed to the “Metrics Sync Status” section on your building’s ENERGY STAR tab in the EUDS. You cannot make changes within the EUDS to make these errors go away.

## Does energy star portfolio manager track solar

---



### ENERGY STAR Portfolio Manager Target Finder

Target Finder You can use this tool to set an energy target for your design project and compare the estimated energy use to the target. If the property type is eligible, we'll also provide an ...

### Energy Usage Data System: ENERGY STAR® ...

ENERGY STAR Portfolio Manager is an interactive resource management tool that enables you to benchmark the energy use of any type of building. It is known as the industry standard for benchmarking commercial buildings.



### Energy Usage Data System: ENERGY STAR® Portfolio Manager...

ENERGY STAR Portfolio Manager is an interactive resource management tool that enables you to benchmark the energy use of any type of building. It is known as the industry standard for ...

### ENERGY STAR PORTFOLIO MANAGER REFERENCE ...

EPA's ENERGY STAR building measurement and

tracking tool, Portfolio Manager®, is a free, online, secure resource for all types of properties. Portfolio Manager is both a management ...



48V 100Ah



## Portfolio Manager

This presentation provides an overview of Portfolio Manager's GHG functionality, including understanding Portfolio Manager's GHG emissions inventory, learning how to track emissions benefits from green power use, and ...

## Reporting and Data Disclosure

Benchmarking with Portfolio Manager, and disclosing the results, is increasingly being required by state and local governments. Reporting benchmarking results and/or earning certification ...



## **Portfolio Manager 201 Frequently Asked Questions**

Portfolio Manager can track open parking lots, partially enclosed parking garages, and completely enclosed parking garages. To enter your parking, you can either sub-meter your parking and ...

## Overview of EPA's ENERGY STAR Portfolio Manager®: A ...

Q& A Post-webinar survey EPA's ENERGY STAR Portfolio Manager is an online tool organizations can use to measure and track energy and water consumption, as well as GHG ...



## ENERGY STAR PORTFOLIO MANAGER REFERENCE ...

Benchmark your property in Portfolio Manager and achieve an ENERGY STAR score of 75 or higher. The score is calculated based on the information entered into Portfolio Manager, which ...

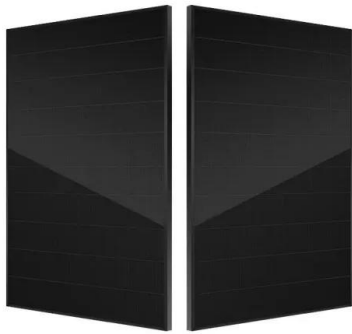


## [An Overview of Portfolio Manager](#)

All property types can use Portfolio Manager to measure and track energy, water, and waste. The tool contains an expanded list of property types - 85 total - offering more specific ...

## [ENERGY STAR® Portfolio Manager](#)

ENERGY STAR® Portfolio Manager is a secure, web-based tool developed by the U.S. Environmental Protection Agency (EPA) that enables property managers to track and assess ...



## [Portfolio Manager Quick Start Guide](#)

Manager Quick Start Guide EPA's ENERGY STAR Portfolio Manager tool helps you measure and track the energy and water use, waste and materials, and greenhouse gas emissions of your ...



## [How to use Portfolio Manager](#)

Benchmark the energy use of all of your buildings - receive an energy use intensity (EUI) . Many buildings, including office buildings can receive energy performance ratings on a 1-100 scale.

## **ENERGY STAR Portfolio Manager Documentation**

The Meter Services allow you to manage meters within Portfolio Manager. These services support all meter categories: all fuels, water, Data Center IT energy meters, waste, and water and ...





## Energy Usage Data System: ESPM User Guide

2.1 Download your ENERGY STAR Property 2.2 Create a New ENERGY STAR Portfolio Manager Meter 2.3 Connect Your Building Between ENERGY STAR Portfolio Manager and the ...

## How do I enter onsite green power (solar/wind)? Part 3a

If you do not have access to your solar energy meter, then you as don't have complete energy data for the property. You'll need to mark that the meters entered on the ...



## Portfolio Manager 101: Navigating Portfolio Manager

Portfolio Manager allows building owners and managers the opportunity to track energy use, water use, and waste, offering what we like to call a "tracking trifecta," and reflecting the fact ...

## [ENERGY STAR Portfolio Manager: Login](#)

ENERGY STAR Portfolio Manager Welcome to Portfolio Manager Helping you track and improve energy efficiency across your entire portfolio of properties.



## ENERGY STAR Portfolio Manager (ESPM) FAQs

ENERGY STAR Portfolio Manager (ESPM) is a free tool managed by the U.S. EPA and Department of Energy (DOE) that enables real estate investors, owners, and managers to ...



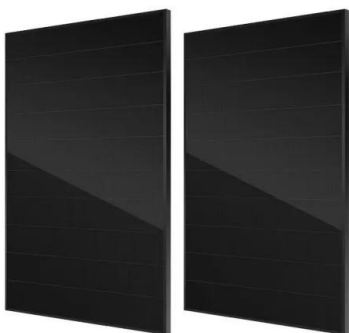
## How to Get Utility Data into Portfolio Manager

How to Get Utility Data into Portfolio Manager  
 EPA's ENERGY STAR Portfolio Manager tool helps you measure and track energy use, water use, and greenhouse gas emissions of your ...



## [ENERGY STAR Portfolio Manager](#)

Web Service Documentation If you exchange data via web services, check out the documentation or get email updates. Don't forget, we're out there with you! Network with us and other folks ...



## Tracking Greenhouse Gas Emissions in Portfolio Manager

Portfolio Manager GHG Inventory: Direct Emissions (Scope 1) Direct emissions result from the on-site use of primary energy products at a property, such as natural gas, fuel oil, or propane ...



### Microsoft Word

What is benchmarking? Benchmarking is the process of evaluating the energy performance of a facility relative to key indicators, including the performance of peers and the historic ...

## How to Get Utility Data Into Portfolio Manager®

How to Get Utility Data Into Portfolio Manager® The ENERGY STAR Portfolio Manager tool helps you measure and track the energy and water use, waste and materials, and greenhouse gas ...



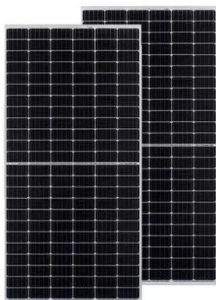
## How to Get Utility Data into Portfolio Manager

How to Get Utility Data into Portfolio Manager EPA's ENERGY STAR Portfolio Manager tool helps you measure and track the energy and water use, waste and materials, and greenhouse gas ...



## ENERGY STAR Portfolio Manager Building Emissions Calculator

The Building Emissions Calculator can estimate historical, current and future annual emissions resulting from your building's energy use. Baseline annual emissions, track changes over time, ...



## Beyond ENERGY STAR Portfolio Manager: What to Do Right Now

ENERGY STAR® Portfolio Manager may be phased out as early as October 2025. Learn what corporate occupiers and real estate firms can do now to prepare.

## INTRODUCTION TO ENERGY STAR PORTFOLIO ...

What Can I Learn? o Why is my ENERGY STAR rating so low compared to typical properties similar to mine? o How much energy do I need to save to attain ENERGY STAR certification? o ...



## Contact Us

---

For catalog requests, pricing, or partnerships, please visit:  
<https://bialydom.kolobrzeg.pl>