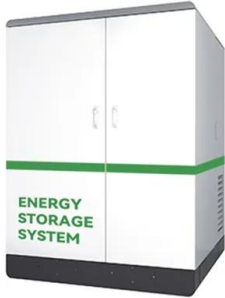


European Solar Energy Storage

Bbu battery backup unit Togo



Bbu battery backup unit Togo



???bbu?????

???BBU(Battery Backup Unit)????????????????,??
 ??????RAID???BBU????????????????,?????RAID????
 ?????,???????????????? BBU????????????????,??????????

Battery Backup Unit - Lite-On Cloud Infrastructure Platform

The 1.75kW Lithium-ion Battery Backup Unit is both a battery pack and a power module that includes 1.75kW discharge capacity and a constant-current charger for its batteries. The BBU can supply 12V full-power backup for over 3 minutes during an AC power loss or power fault condition.



Fios box battery replacement

The BBU is the Battery Backup Unit that plugs into the wall. It houses the battery and power supply for the ONT. It is always mounted indoors and connects to the ONT via a special cable. Since it usually has a big "Verizon" label on it, many people mistake it for the ONT. It is not; it is simply the power supply.

How to Replace a VNX1 or VNX2 DPE Battery Backup ...

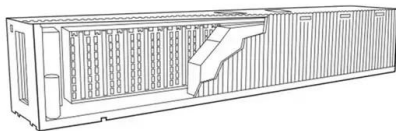
In this video, we will be replacing a battery backup unit in a disk processor enclosure of the next generation VNX series. After you've identified the faulted BBU in this case the faulted BBU is on the A side you remove the ...

**LPR Series 19'
 Rack Mounted**



Linear Battery Backup Unit for LDCO800 BBU

Linear Battery Backup Unit for LDCO800 BBU is the easy-to-mount BBU accessory complements Linear's popular LDCO800 DC-powered Garage Door Operator. Exceptionally compact, the BBU mounts entirely inside the LDCO800 enclosure, maintaining the aesthetically-pleasing characteristics of the DC operator, while delivering peace of mind to homeowners when power ...



Frontier Internet Battery Backup Guide

The PSI Li-36 Micro BBU utilizes a stackable battery technology to offer 24 hours of battery backup. How to install the PSI Li-36 MICRO BBU
 1. Slide MICRO BBU Battery Pack onto MICRO BBU Power Supply until Battery Pack becomes fully flush with the top of the Power Supply. You should hear a "click" when the Battery Pack is fully seated. 2.



How to connect a Battery Backup Unit (BBU) to your Smart Hub



Setting up the Battery Backup Unit to your Smart Hub . Slide open the battery compartment of your Battery Backup Unit and remove the battery; Slide the battery back in part of the way so you can connect the red wire to the red terminal; Slide the battery in fully and replace the cover; Plug the Battery Backup Unit into the mains using the power

BBU, Backup Battery Unit.

BBU, Backup Battery Unit. YUAN-FENG; The BMS plays a critical role in ensuring the safe, efficient, and reliable operation of a Battery Backup Unit. Its primary responsibilities include: 1. Battery Health Monitoring: The BMS constantly monitors key battery parameters such as voltage, temperature, and charge/discharge currents. This prevents



Battery Backup Unit - Lite-On Cloud Infrastructure ...

The 1.75kW Lithium-ion Battery Backup Unit is both a battery pack and a power module that includes 1.75kW discharge capacity and a constant-current charger for its batteries. The BBU can supply 12V full-power backup for over 3 minutes ...

NVIDIA GB300 Power System - PSU, BBU, and Super Capacitor

...

First of all, it's important to understand that the Battery Backup Unit (BBU) and super capacitors together form the Energy Storage Tray in the GB200/300 rack. These components are supplied by the same power shelf vendors, namely Delta

Electronics, Lite-On, and Megmeet. The BBU can be seen as an advanced version of the traditional UPS

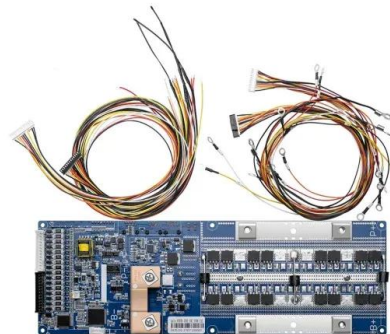


Battery Backup Unit (BBU) -- Submittal/Technical Data

Battery Backup Unit (BBU) -- Submittal/Technical Data For Series 70 Actuators -- 800-5,000 lb-in. Battery Backup Unit - Specifications Technical Specifications Power Requirements 24-27 VAC or 30-38 VDC (the minimum voltage is required to provide proper battery charging). Use dedicated Class 2 non-bonded transformer rated 100VA per BBU

Battery Backup Unit User's Guide

Congratulations for your purchase of the NE3303-153 RAID Battery Backup Unit (called BBU hereafter). The User's Guide describes how to install and use the BBU correctly and safely. Read the guide thoroughly before handling it. In addition, refer to this manual when you want to know how to use it or some malfunction occurs. Always keep the



MegaRAID® Battery Backup Unit User's Guide

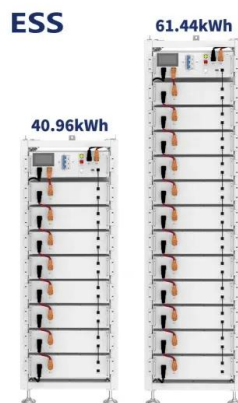
MegaRAID® Battery Backup Unit USER'S GUIDE
 October 2005 Version 1.1. ii Table 1.1 MegaRAID
 Battery Backup Unit Matrix BBU Product Name
 Description For Storage Adapters LSIBBU01

(Order #: LSIBBU01) BBU MegaRAID SCSI 320-1
 MegaRAID SATA 150-6 LSIBBU02 (Order #: LSIBBU02)



BBU , Data Center & Open Compute

Battery backup unit which can be used by connecting to Murata's centralized power supply system. In the event of power outage, it will power IT equipment a certain time instead of PSU. It is used by installing into the Murata's battery shelf.



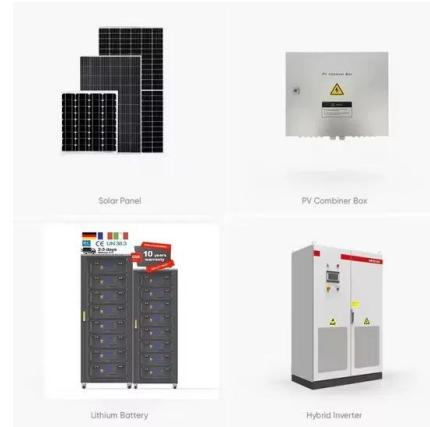
How to Replace a DPE Battery Backup Unit for Unity

On the battery on bus module press the release tab on the cable connector and disconnect it from the battery. Then, using one hand, press out on the two retaining tabs at the base of the BBU and, at the same time, use the other hand to lift the front of the BBU at an angle and remove it from the motherboard.

Cisco Catalyst IR8140 Heavy Duty Series Router Software ...

The integrated modular battery backup unit (BBU) is a smart charging and monitoring system. When the system AC power is turned off on the IR8100, the installed BBU supplies power to the router. The BBU also allows graceful shutdown of events on the router based on the

configured voltage level thresholds.



Battery Back-up Unit

Battery Back-up Unit. BBU--a new low-carbon alternative for uninterruptible power systems. In the past, the uninterruptible power systems (UPS) of data centers used lead-acid batteries. These days, however, they are beginning to use more efficient, more cost-effective and environmentally friendly battery back-up Unit (BBU) to ensure stable

Smart Battery Backup for Uninterrupted Energy Part 3: Battery

This article describes the algorithm developed by Analog Devices for the Open Compute Project (OCP) Open Rack V3 (ORV3) battery backup unit (BBU) for the battery management system (BMS), an essential device of any data center BBU. Its primary responsibility is to ensure the safety of the battery



Solved: Digital Voice Battery Backup

A battery backup unit (BBU) is only any use during a power outage so didn't have any bearing if you were migrated to DV and were out of service for 13 days, whatever the problem

NVIDIA GB300 Power System - PSU, BBU, and Super Capacitor

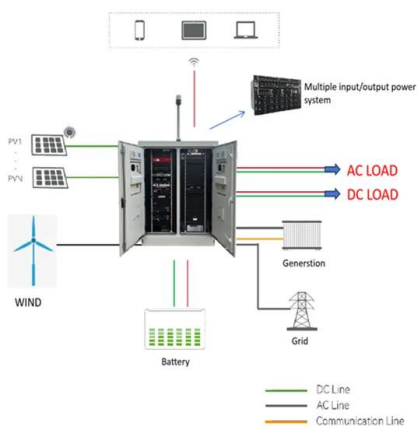
...

GB200, GB300, NVL72, Battery Backup Unit, BBU, super capacitor, Energy Storage Tray, power shelf, Delta, Lite-on, UPS, PSU, AES, Dynapack, peak shaving tray, Skeleton, Elna, Musashi, Panasonic. ??????????????GB200 ?power system design??(Is Monolithic Power System (MPWR US) a Short?



Smart Battery Backup for Uninterrupted Energy Part 4: BBU

This article details Analog Devices' hardware and software for the Open Compute Project Open Rack Version 3 (OCP ORV3) battery backup unit (BBU) shelf. Its primary duty is to create communication between its BBU module and present readable data and information to the user via a graphical user interface (GUI) that is carefully crafted for this



Battery Backup Units , CenturyLink

While under BBU power, you may not want to access the internet much, as it will deplete the BBU faster. Other services, such as security alarms, will not work if they do not have their own battery backup. You are responsible for obtaining, monitoring, replacing, and properly disposing of the BBU and all batteries for it.

BBU (Backup Battery Unit) ?????????????? ...

????, BBU (Backup Battery Unit) ??????????, ?? ES
 NAS ?????????? ES NAS ? 2 ??????????????, ?????????
 BBU ??, ??? Intel Xeon ??? ADR ??, ??????????, ????? ...



How to replace a VNXe 1600 or 3200 DPE Battery Backup Unit

4 ???· This CRU demonstration covers replacing a DPE and battery backup unit in a VNXe. Covered in this demonstration is the removal of the faulted component and the installation of the replacement. To remove the BBU what we want to do is press the white tabs on each side of the cable connector and gently pull outward to release it from the

Battery Backup Information

To access battery on your unit. Important: Before you begin unplug the Battery Backup Unit from the wall outlet. Use a screwdriver to remove the screw securing the access panel. Press the lever on the right side of the Battery Backup Unit (BBU) door. The door swings open from right to left.



Contact Us

For catalog requests, pricing, or partnerships, please visit:
<https://bialydom.kolobrzeg.pl>