

European Solar Energy Storage

Australian energy storage cec certification



Overview

The Clean Energy Council maintains lists of approved inverters and power conversion equipment (PCE), PV modules and energy storage devices (lithium-based batteries) that meet Australian and international standards for use in the design and installation of solar and battery storage systems. What does CEC do?

CEC do this through a number of ways including the accreditation of solar installers across Australia, maintaining lists of approved modules, inverters and battery energy storage products, running an Approved Solar Retailer program, developing guidelines and having input into the development of Australian Standards.

What is CEC certification?

The CEC certification, as the core entry standard in the country's clean energy field, is not only a "touchstone" for product performance, but also a prerequisite for enterprises to participate in local energy infrastructure and policy-supported projects.

What is Australia doing about energy storage?

Australia is actively progressing along the risk development curve of energy storage and is one of the nations at the forefront of facility size and knowledge on the global level (e.g., Victoria Big Battery and the South Australian Hornsdale facilities).

Why should you join the CEC?

The CEC policy and advocacy work allows members to have a strong voice that helps to influence and accelerate the take up of clean energy in Australia. The CEC also have a strong focus on raising standards and maintaining integrity with the industry.

What are the CEC guidelines?

The guidelines contain practical design and installation information as well as your responsibilities to those you work with and your customers. CEC-accredited installers and designers and CEC members can log in to their account to download copies of the guidelines.

Is there an Australian standard for large energy storage batteries?

A major issue identified by ESV is the absence of an Australian Standard for large energy storage battery facilities. Efforts are being made to expedite the creation and subsequent release of an appropriate standard, however as an interim measure, technical guidance will represent an iterative update of the existing CEC guidance.

Australian energy storage cec certification



CEC accreditation: What is it and why is it so important?

Through CEC accreditation of solar installers in Australia, maintaining lists of approved solar PV systems or battery storage systems, developing guidelines and contributing to Australian Standards, the CEC plays an important role in Australia's renewable energy transition.

Palliative Care: What It Is, Benefits, Examples, More

Palliative care is a multidisciplinary treatment that aims to improve the quality of life and overall well-being of people with chronic, life-altering illnesses.



Palliative care

Look up palliative in Wiktionary, the free dictionary. Palliative care (from Latin root palliare "to cloak") is an interdisciplinary medical care-giving approach aimed at optimizing quality of life and mitigating or reducing suffering among people with serious, complex, and often terminal illnesses. [1] Many definitions of palliative

Palliative Care Definition , What is Palliative Care , Center to

What is palliative care? Find the definition of palliative care, specialized medical care focused on improving quality of life for people living with serious illness, and their families, from the Center to Advance Palliative Care.



Palliative Care in Cancer

Palliative care is usually provided by palliative care specialists, health care practitioners who have received special training and/or certification in palliative care. They provide holistic care to the patient and family or caregiver focusing on the physical, emotional, social, and spiritual issues cancer patients may face during the cancer experience. Often, palliative care specialists work

SOLAR PV AND STORAGE TRAINING COURSES ...

SOLAR PV AND STORAGE TRAINING COURSES AUSTRALIA Qualification/course Accreditation type Organisation name Location Phone ACT (continued) New South Wales



Definition of Palliative Care , What is Palliative Care?

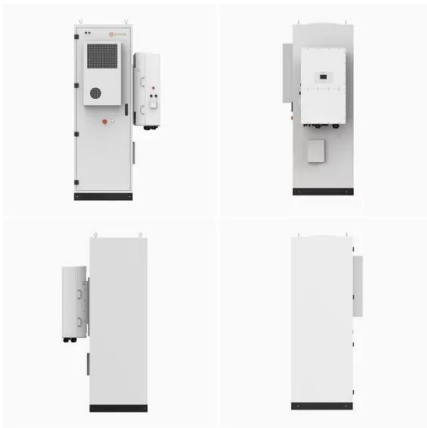
Definition of Palliative Care Palliative care is specialized medical care for people living with a serious illness. This type of care is focused on providing relief from the symptoms and stress of the illness. The goal is to improve quality of life for both the patient and the family. Palliative



care is provided by a specially-trained team of doctors, nurses, social workers, chaplains, and

Palliative care

Palliative care is an approach that improves the quality of life of patients (adults and children) and their families who are facing problems associated with life-threatening illness.



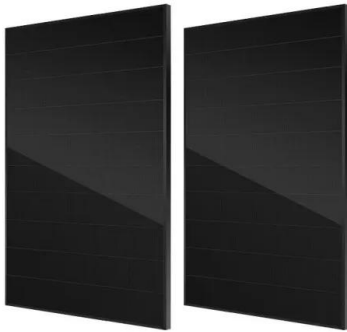
PotisEdge's OmniCube-A215 Now CEC Listed in ...

The CEC certification of PotisEdge marks the first time that an energy storage enterprise has broken the market monopoly of overseas brands with its own technology, providing local users with a more secure and reliable ...

PotisEdge's OmniCube-A215 Now CEC Listed in Australia

The CEC certification of PotisEdge marks the first time that an energy storage enterprise has broken the market monopoly of overseas brands with its own technology, providing local users with a more secure and reliable system solution that better meets regional needs.





Products , Clean Energy Council

The Clean Energy Council maintains lists of approved inverters and power conversion equipment (PCE), PV modules and energy storage devices (lithium-based batteries) that meet Australian and international standards for use in the design and installation of solar and battery storage systems.

Energy Training Group

We provide accredited training for Australians who wish to work in roles that require knowledge and skills in renewable energy, even for those across various industries.



Palliative care

Palliative care is specialized medical care that focuses on providing relief from pain and other symptoms of a serious illness. It also can help you cope with side effects from medical treatments.

Certification Guide , Solar & Storage Live QLD

Apply to the Clean Energy Council (CEC) if you sell solar panels, inverters or batteries. Register EV chargers through EESS and ACMA to get the RCM compliance label.



Palliative Care, What It Is, and When It's Needed

This article explores the elements of palliative care along with the types of treatments that may be involved. It also details when palliative care is needed, including the criteria used by healthcare professionals and health insurers.

Battery Energy Storage Systems

This guidance report has been commissioned by the Australian Energy Council to initiate and facilitate collaboration amongst its member organisations towards a harmonised leading practice approach for grid-scale BESS facilities in Australia.



DETAILS AND PACKAGING



- 1 USER MANUAL PDF
- 2 RJ45 Cable For RS485/CAN
- 3 Battery in Parallel Cables
- 4 RJ45 TO USB Monitor Cable
- 5 M8 Terminal*4

Clean Energy Council

To assist CEC-accredited installers and designers in interpreting the relevant Australian Standards when installing and designing solar and battery storage systems to the highest standard, the Clean Energy Council produces design ...

Clean Energy Council

To assist CEC-accredited installers and designers in interpreting the relevant Australian Standards when installing and designing solar and battery storage systems to the highest standard, the Clean Energy Council produces design and installation guidelines.



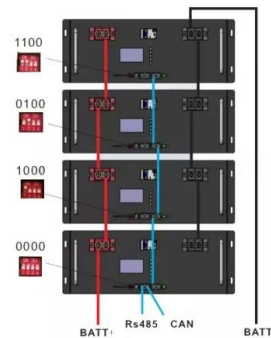
What Are Palliative Care and Hospice Care?

Palliative care and hospice care both focus on the comfort, care, and quality of life of individuals with a serious illness. Hospice care is a specific type of palliative care that is provided in the final weeks or months of life.



Australian CEC Registration Guide , China JJR Test Lab

JJR Laboratory in China offers Australian CEC energy efficiency registration services -- saving you up to 30% on certification costs. Contact us for consultation.



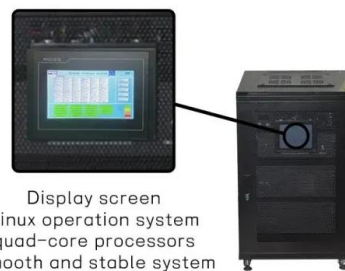
Palliative Care: Purpose & What To Expect

Palliative care is a specialized form of care that provides symptom relief, comfort and support to people living with serious or chronic illnesses. It also provides support to caregivers and those impacted by a loved one's condition.



Australian energy storage cec certification

It has gained CEC certification from the Clean Energy Council which enables the batteries to be included in Federal and State-based home energy storage schemes such as Solar Victoria's Solar Homes Program and the Home Battery Scheme in South Australia.



Contact Us

For catalog requests, pricing, or partnerships, please visit:
<https://bialydom.kolobrzeg.pl>