

## European Solar Energy Storage

# Adhesive storage modulus



## Overview

---

The aim of this review is to summarize research works on mechanical properties of pressure sensitive adhesives (PSAs). The mechanical properties of PSAs are usually described by tack, shear resistance and peel strength.

How do moduli & modulus affect adhesive performance?

The moduli values from a frequency sweep will often directly correlate to the performance of the adhesive. Modulus values at high frequency will relate to the peel strength and behaviour of the adhesive. Low-frequency values of  $G'$  and  $G''$  will relate to shear resistance.

What is storage modulus?

Storage modulus is measured for materials like polymers that have an elastic and viscous component. I suspect for the data you see it reports storage modulus, which is elastic storage modulus, not shear storage modulus. It is likely reported as a static modulus, so would assume it to be equal to the elastic modulus,  $E$ , or close to it.

What are the mechanical properties of pressure sensitive adhesives (PSAs)?

The aim of this review is to summarize research works on mechanical properties of pressure sensitive adhesives (PSAs). The mechanical properties of PSAs are usually described by tack, shear resistance and peel strength, which are strongly dependent on bulk viscoelastic properties of adhesive system.

What is the difference between storage modulus and elastic modulus?

Dhruvil if you intend to do elastic "static analysis", you need the static elastic modulus, for which you require the loss factor,  $\delta$ , then the elastic modulus equals the storage modulus/ $\cos(\delta)$ , if  $\delta$  is small ( $<0.1$ ) the difference between storage and elastic modulus is roughly 1~2%.

What is the storage modulus  $G$  at room temperature?

For a good PSA with high cohesive strength, the storage modulus  $G'$  at room

temperature has a value of  $5 \times 10^4$  to  $2 \times 10^5$  Pa. 2 The approximate strain rates encountered in typical operations associated with the manufacture and end use of a common pressure-sensitive tape adhesive are shown in Figure 1.

Can storage modulus be used for static analysis?

If you intend to do elastic "dynamic" analysis, you can directly use storage modulus. if you intend to do visco-elastic (dynamic) analysis, you require both storage and loss modulus, (also known as dynamic, or complex modulus) Yes, storage modulus (PI make sure this is for Shear ) can be directly used for static analysis. Hello,

## Adhesive storage modulus



### Properties of adhesives

Two parameters are measured during the test: the storage modulus ( $E'$  or  $G'$ ) is the elastic or recoverable behaviour of the material, and the loss modulus ( $E''$  or  $G''$ ) is the viscous or dissipative behaviour of the material.

### Storage modulus, adhesion

The incorporation of SWCNTs induces a remarkable increase in the storage modulus of the matrix at temperatures below the glass transition, which becomes worthless at higher temperatures.



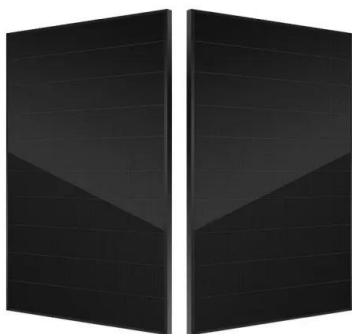
### **Is there a relationship between Storage modulus and elastic modulus ...**

Is there a relationship between Storage modulus and elastic modulus for a solid? I have a data sheet for an adhesive in front of me.

### **Is there a relationship between Storage modulus and ...**

Is there a relationship between Storage modulus

and elastic modulus for a solid? I have a data sheet for an adhesive in front of me.



## RHEOLOGICAL CHARACTERIZATION OF PRESSURE ...

Here, the increased storage and loss moduli values are indicative of the stronger adhesive strength afforded by the use of Sample A. By contrast, the lower storage moduli values of Sample B are reflective of a material with a low degree of crosslinking with poor tack properties.

### Rheology of Adhesives

Modulus values at high frequency will relate to the peel strength and behaviour of the adhesive. Low-frequency values of  $G'$  and  $G''$  will relate to shear resistance.



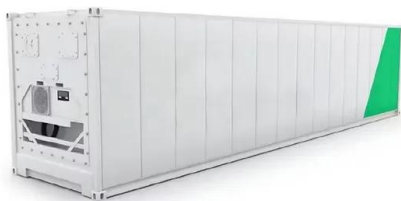
## G-Values: $G'$ , $G''$ and $\tan \delta$ , Practical Adhesion Science

Given that a PSA works by absorbing energy during an attempt to form a crack, it's clear that a "loss" modulus is of great significance. You cannot formulate a good PSA without a good  $G''$ .



## Characterizing PSAs by Rheology , Adhesives & Sealants Industry

Figure 1 shows the mechanical response in terms of the storage modulus  $G'$  for a typical natural rubber-based PSA as a function of frequency. The storage modulus represents the elastic deformation of a material and is a measure of the hardness at ...



## Application Note: Nanomechanics of Pressure ...

Nanoindentation can assess tackiness and mechanical properties of high-performance adhesives by quantifying storage modulus, loss modulus, tan delta, and near-surface work of adhesion under a range of conditions.

## Molecular Structure, Mechanical Behavior and Adhesion

With this method, the two components of the complex dynamic shear modulus, the storage modulus  $G'$  and the loss modulus  $G''$ , are determined as a function of temperature and

angular frequency.



## Application Note: Nanomechanics of Pressure- Sensitive Adhesives ...

Nanoindentation can assess tackiness and mechanical properties of high-performance adhesives by quantifying storage modulus, loss modulus, tan delta, and near-surface work of adhesion under a range of conditions.

## Characterizing PSAs by Rheology , Adhesives

Figure 1 shows the mechanical response in terms of the storage modulus  $G'$  for a typical natural rubber-based PSA as a function of frequency. The storage modulus represents the elastic deformation of a material and is a ...



## A review on mechanical properties of pressure sensitive adhesives

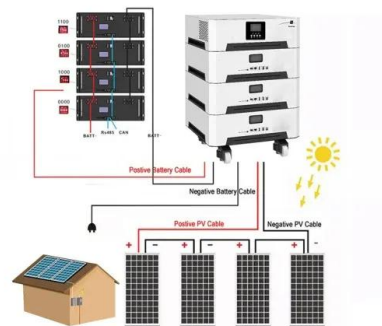
The aim of this review is to summarize research works on mechanical properties of pressure sensitive adhesives (PSAs). The mechanical properties of PSAs are usually described by tack, shear resistance and peel strength, which are



strongly dependent on bulk viscoelastic properties of adhesive system.

## Molecular Structure, Mechanical Behavior and ...

With this method, the two components of the complex dynamic shear modulus, the storage modulus  $G'$  and the loss modulus  $G''$ , are determined as a function of temperature and angular frequency.



## G-Values: $G'$ , $G''$ and $\tan \delta$ , Practical Adhesion ...

Given that a PSA works by absorbing energy during an attempt to form a crack, it's clear that a "loss" modulus is of great significance. You cannot formulate a good PSA without a good  $G''$ .

## Contact Us

For catalog requests, pricing, or partnerships, please visit:  
<https://bialydom.kolobrzeg.pl>