

European Solar Energy Storage

Abb vacuum circuit breaker cannot store energy

Applications



Electric motorcycle



Electric Forklift



Electric Boat



Golf Cart



RV



Audio Equipment



Solar Street Light



Household Energy Storage



Energy Storage System



Overview

Let's start with a simple truth: ABB vacuum circuit breakers are like the Olympic sprinters of electrical systems —lightning-fast but not built for marathons. Unlike batteries or capacitors, these devices specialize in interrupting power, not storing it. But why does this matter?

And who should care?

Why should you use ABB vacuum interrupters?

Apart from minimising thermal stress on the contacts, all this makes contact erosion negligible and, above all, allows the interruption process to be controlled even with very high short-circuits. ABB vacuum interrupters are zero-current interrupters and are free of any re-striking.

How to open a circuit breaker?

When capacitor stored energy is no longer sufficient to achieve tripping, the circuit breaker can then be opened with the assistance of a manual opening handle. The armature of the magnetic actuator is linked to an operating shaft connected via insulated push rods to each of the vacuum interrupters.

What type of circuit breaker is suitable for auto-closing?

in number of short-circuit breaking operations are expected. Type VD4 vacuum circuit-breakers are suitable for autoreclosing, and ng AC 1 kVVDE 0105, operation of electrical installationsDIN VDE 0141, earthing systems for special power installations with rated voltages over 1 kV Accident prevention regulations issued by the.

Can a breaker be opened without a charging motor?

ing mechanisms, but must be carried out manually on breakers without charging motors (or when the charging motor has broken down). Opening of the breaker is also possible during the (re-)charging process, but subsequent closing of the breaker is however blocked until the charging process has been

completed. 1.

Which vacuum circuit breaker is suitable for air insulated switch systems?

ABB brand VD4 vacuum circuit breaker is suitable for air-insulated indoor switch systems.

What happens after a circuit breaker is closed?

After the circuit breaker is closed, the normally open contact of the auxiliary switch S4 should be closed. After the circuit breaker is opened, the normally open contact of the auxiliary switch S4 should quickly disconnect the opening circuit, so that the opening coil can withstand short-term energization.

Abb vacuum circuit breaker cannot store energy

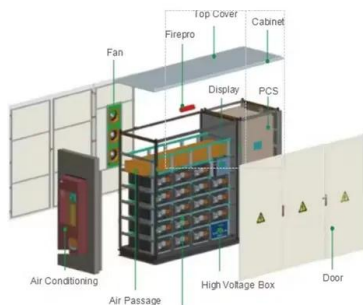


2019.12.23 VD4X Instruction Manual_EN

Only remove and reassemble circuit-breaker parts and accessories when the breaker has been switched off and the working area properly isolated and secured to prevent reconnection.

Common faults and troubleshooting methods of ABB universal circuit breakers

Remedy 1: If the universal circuit breaker cannot store energy manually, it is caused by the mechanical failure of the energy storage device, so it is recommended to contact the manufacturer for repair or replacement.



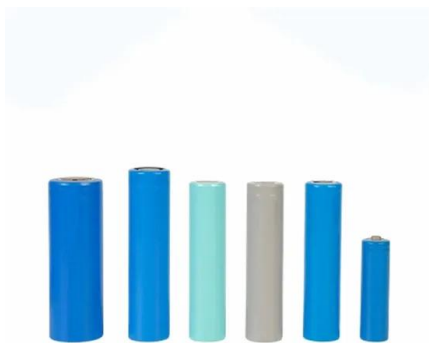
Abbv4 circuit breaker cannot store energy

Vacuum circuit-breakers have particular ad-switching frequency in the working current range and/or where a certain number of short-circuit breaking operations are expected.

How Does ABB Vacuum Circuit Breaker Store Energy? The ...

Ever wondered what makes ABB vacuum circuit

breakers the "Energizer Bunnies" of power distribution? The magic lies in their spring-loaded energy storage system. These devices don't just break circuits - they store enough juice to snap into action faster than a caffeine-powered electrician on Monday morning.



Common fault phenomena and maintenance methods of ABB brand VD4 vacuum

After the circuit breaker is opened, the normally open contact of the auxiliary switch S4 should quickly disconnect the opening circuit, so that the opening coil can withstand short-term energization.

Medium voltage vacuum circuit-breaker

In the basic version of the circuit-breaker, the spring energy store is charged manually. The operating mechanism can optionally be fitted with a charging motor.



Druck

These units were used for older air-magnetic breakers. The second generation used the same mechanism modified for use with a vacuum bottle. The new generation of circuit breakers, such as the ADVAC breaker with a toroidal spring, were ...



Abb circuit breaker energy storage failure

Remedy 1: If the universal circuit breaker cannot store energy manually, it is caused by the mechanical failure of the energy storage device, so it is recommended to contact the manufacturer for repair or replacement.

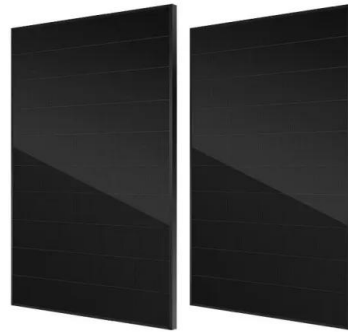


Why ABB Vacuum Circuit Breakers Can't Store Energy (And Why ...

Let's start with a simple truth: ABB vacuum circuit breakers are like the Olympic sprinters of electrical systems--lightning-fast but not built for marathons. Unlike batteries or capacitors, these devices specialize in interrupting power, not storing it. But why does this matter? And who should care?

Common fault phenomena and maintenance methods ...

After the circuit breaker is opened, the normally open contact of the auxiliary switch S4 should quickly disconnect the opening circuit, so that the opening coil can withstand short-term energization.



Instruction manual VD4 Vacuum circuit-breaker - 36/40.5

Ensure that the circuit-breaker unit on the withdrawable part, with its high centre of gravity, cannot tip over when moving it by fork lift truck, or when handling it outside the switchgear.



Standard 20ft containers



Standard 40ft containers

Contact Us

For catalog requests, pricing, or partnerships, please visit:
<https://bialydom.kolobrzeg.pl>