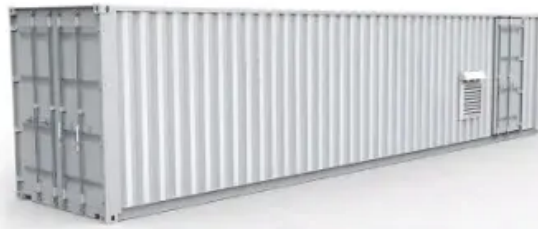


## European Solar Energy Storage

**A solar cell converts light energy into mcq**



## Overview

---

Solar cells, also known as photovoltaic cells, are devices that convert light energy directly into electrical energy through the photovoltaic effect. The most commonly used material for making solar cells is silicon.

Solar cells, also known as photovoltaic cells, are devices that convert light energy directly into electrical energy through the photovoltaic effect. The most commonly used material for making solar cells is silicon.

Solar cells are solid-state devices that convert sunlight directly into electricity, without the need for any mechanical or moving parts. This makes them highly reliable and durable, with very little maintenance required. The absence of moving parts also means that solar cells operate silently and.

An electronic device designed to trap the natural solar or sun's energy into its panels in order to generate electricity is called a solar cell or a PV cell. The main purpose of this cell is to generate natural electricity from a renewable source of light. It comprises 3 main layers - top, middle.

Below you can find MCQ's or multiple choice questions related to solar cell and related topics for engineering students. Correct answers are in red and bold font. 1. a PV cell is also called?

a) IR cell b) VU cell c) Solar cell d) All of the above 2. PV effect in solar cell converts solar energy.

A solar cell converts light energy into \_\_\_\_\_ Explanation: A solar cell converts light energy into electrical energy. The light energy excites the electron of the solar cell which further flows in the circuit and constitutes the electric current. 2. There are three types of the solar cells.

r cell converts light energy into electrical energy. The light energy excites the electron of the solar cell which further flows n the circuit and constitutes the electri a Explanation: There are three types of solar cells. Single crystal, polycrystal, and amorph mbination of the solar cell is.

**Solar cell:** A solar cell is a p-n junction diode that transforms sunlight (solar energy) into electrical energy. It works on the principle of photovoltaic conversion. When solar radiations of energy  $h\nu > E_g$ , (energy gap of the semiconductor), is incident on the p-n junction, they are absorbed by. How does a solar cell convert light energy into electrical energy?

**Explanation:** A solar cell converts light energy into electrical energy. The light energy excites the electron of the solar cell which further flows in the circuit and constitutes the electric current. 2. There are three types of the solar cells.  
**Explanation:** There are three types of solar cells.

How many solar cell MCQs for engineering students?

This article lists 40 Solar Cell MCQs for engineering students. All the Solar Cell Questions & Answers given below include a hint and a link wherever possible to the relevant topic. This is helpful for users who are preparing for their exams, or interviews, or professionals who would like to brush up on the fundamentals of Solar Cell.

What are solar cells used for?

**Explanation:** Solar cells, also known as photovoltaic cells, are devices that convert light energy directly into electrical energy through the photovoltaic effect. The most commonly used material for making solar cells is silicon.

How do solar cells produce electricity?

Solar cells convert the sun's energy into electricity. Solar cells are made of semiconductor materials like silicon, cadmium telluride, and copper indium gallium selenide. The working principle of solar cells is based on the photovoltaic effect. The photovoltaic effect is the production of electricity by a material when it is exposed to the light.

What is a solar cell & how does it work?

An electronic device designed to trap the natural solar or sun's energy into its panels in order to generate electricity is called a solar cell or a PV cell. The main purpose of this cell is to generate natural electricity from a renewable source of light. It comprises 3 main layers - top, middle and bottom layer.

What is a solar photovoltaic (PV) system?

**Solar cell:** Solar photovoltaic (PV) systems convert solar energy directly into

electrical energy. The basic conversion device used is known as a solar photovoltaic cell or solar cell. A solar cell is basically an electrical current source, driven by a flux of radiation as the current output energy is dependent on solar radiation.

## A solar cell converts light energy into mcq

---

### Unit-II Solar Energy (MCQ) With Answers , PDF



The most common type is polycrystalline silicon solar cells, which have an efficiency around 14-17%. A solar cell consists of three layers - a top P-type layer made of silicon and phosphorous, a bottom N-type layer made of silicon and ...

### How a Solar Cell Converts Light Energy into Electricity

A solar cell is a device that converts light energy (typically sunlight) directly into electrical energy using the photovoltaic effect. They are the basic building blocks of solar panels.



### Solar energy is converted into electric energy through

A solar cell, or photovoltaic cell, is a semiconductor device that converts the energy of light directly into electricity by the photovoltaic effect. Photovoltaic modules often ...



### A cell converts \_\_\_ energy into \_\_\_ energy

Step-by-Step Solution: 1. Understanding the

Function of a Cell: A cell is a device that converts one form of energy into another. In the context of electricity, it is important to identify the types ...



## First Semester Quizzes Flashcards , Quizlet

Study with Quizlet and memorize flashcards containing terms like A(n) \_\_\_ converts light energy directly into electric energy. LED phototransistor solar cell photoconductive cell, In general, ...

## What is the Difference Between Photodiode and Solar Cell MCQ

Key Takeaways Photodiodes and solar cells are both semiconductor devices with distinct operational principles. Photodiodes require an external bias to function effectively. ...



## Solar Photovoltaic Cell Basics

The amount of electricity produced from PV cells depends on the characteristics (such as intensity and wavelengths) of the light available and multiple performance attributes of the cell. An important property of PV semiconductors ...

## What is a Solar Cell?

A solar cell is an electrical device that converts light energy directly into electricity with the help of photovoltaic effect. Solar cells are usually made from semiconductors like silicon and gallium ...



## JEE : Solar Cell

A solar cell is an electrical device that, through the photovoltaic effect, converts the energy of light directly into electricity. The photovoltaic effect is both a physical and chemical phenomenon. ...

## **250+ TOP MCQs on Solar Panels and Answers - MCQs and ...**

Electric Drives Multiple Choice Questions on "Solar Panels". 1. A solar cell converts light energy into \_\_\_\_\_. A. Electrical energy B. Thermal energy C. Sound ...



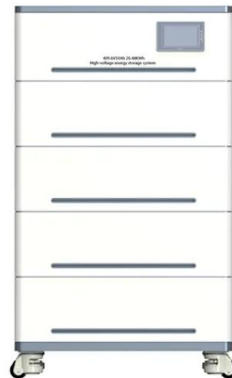
## **Basics of Photo-Voltaic Cells (MCQ Question) , PDF**

The document contains 36 multiple choice questions about photovoltaic cells (also called solar cells), testing knowledge about the components, layers, electrical characteristics, applications, advantages/disadvantages, and ...



## [Solar Panels MCQ \[Free PDF\]](#)

A solar cell converts light energy into electrical energy. The light energy excites the electron of the solar cell which further flows in the circuit and constitutes the electric current.



## How Solar Cell Works to Produce Electricity from ...

What Is a Solar Cell? A solar cell is a semiconductor device that converts light energy into electrical energy. When sunlight strikes the cell, it generates an electric current by knocking electrons loose from atoms within ...

## MCQ Unit 3, 4 & 5 EC339 , PDF , Solar Cell , Solar ...

MCQ unit 3, 4 & 5 EC339 - Free download as PDF File (.pdf), Text File (.txt) or read online for free. The documents provide information about solar cells and fill factor (FF). FF is defined as the ratio of maximum obtainable power to the ...



## [Solar Cell MCQ \[Free PDF\]](#)

Solar cells, also known as photovoltaic cells, are devices that convert light energy directly into electrical energy through the photovoltaic effect. The most commonly used ...



## [Solar Power MCQ \[Free PDF\]](#)

Get Solar Power Multiple Choice Questions (MCQ Quiz) with answers and detailed solutions. Download these Free Solar Power MCQ Quiz Pdf and prepare for your upcoming exams Like Banking, SSC, Railway, UPSC, ...



## [Solar Cell MCQ , Download Pdf](#)

Solar cell: A solar cell is a p-n junction diode that transforms sunlight (solar energy) into electrical energy. It works on the principle of photovoltaic conversion. When solar radiations of energy  $h\nu > E_g$ , (energy gap ...



## Chapter 7: Photosynthesis Flashcards , Quizlet

Study with Quizlet and memorize flashcards containing terms like Which process converts solar energy into chemical energy in the form of a carbohydrate?, A heterotrophic organism is best ...



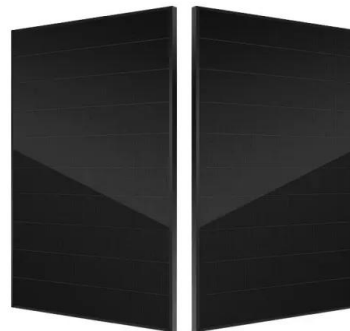
### MCQ PV Photovoltaic Power System

A solar cell converts light energy into electrical energy. The light energy excites the electron of the solar cell which further flows in the circuit and constitutes the electricity.



### 40 Solar Cell Multiple Choice Questions (MCQs) with Answers

This article lists 40 Solar Cell MCQs for engineering students. All the Solar Cell Questions & Answers given below include a hint and a link wherever possible to the relevant ...



### Solar Cell MCQ [Free PDF]

Solar cells, also known as photovoltaic cells, are devices that convert light energy directly into electrical energy through the photovoltaic effect. The most commonly used material for making solar cells is silicon.



## Unlocking Solar Energy: How Solar Cells Efficiently Convert

...

Discover how solar cells transform sunlight into electricity, driving sustainable energy solutions and reducing our reliance on fossil fuels.



## Solar Cell MCQ Multiple Choice Questions

Below you can find MCQ's or multiple choice questions related to solar cell and related topics for engineering students. Correct answers are in red and bold font.

### [Photodiode MCQ \[Free PDF\]](#)

It operates in reverse biased mode and converts light energy into electrical energy and is also known as a photodetector or a photosensor. Only minority current flows ...



## [Solved] Photovoltaic cell converts the solar energy into

The correct answer is electricity. A solar cell, or photovoltaic cell, is an electrical device that converts the energy of light directly into electricity by the photovoltaic effect, which is a physical ...



## Photovoltaic Cell

Photovoltaic Cell Structure A photovoltaic (PV) cell, commonly known as a solar cell, is a device that directly converts light energy into electrical energy through the photovoltaic effect. Here's an explanation of the typical ...



### DETAILS AND PACKAGING



- 1 USER MANUAL PDF
- 2 RJ45 Cable For RS485/CAN
- 3 Battery in Parallel Cables
- 4 RJ45 TO USB Monitor Cable
- 5 M8 Terminal\*4

## Solar Cell: Working Principle & Construction ...

A solar cell (also known as a photovoltaic cell or PV cell) is defined as an electrical device that converts light energy into electrical energy through the photovoltaic effect.

## Contact Us

For catalog requests, pricing, or partnerships, please visit:  
<https://bialydom.kolobrzeg.pl>